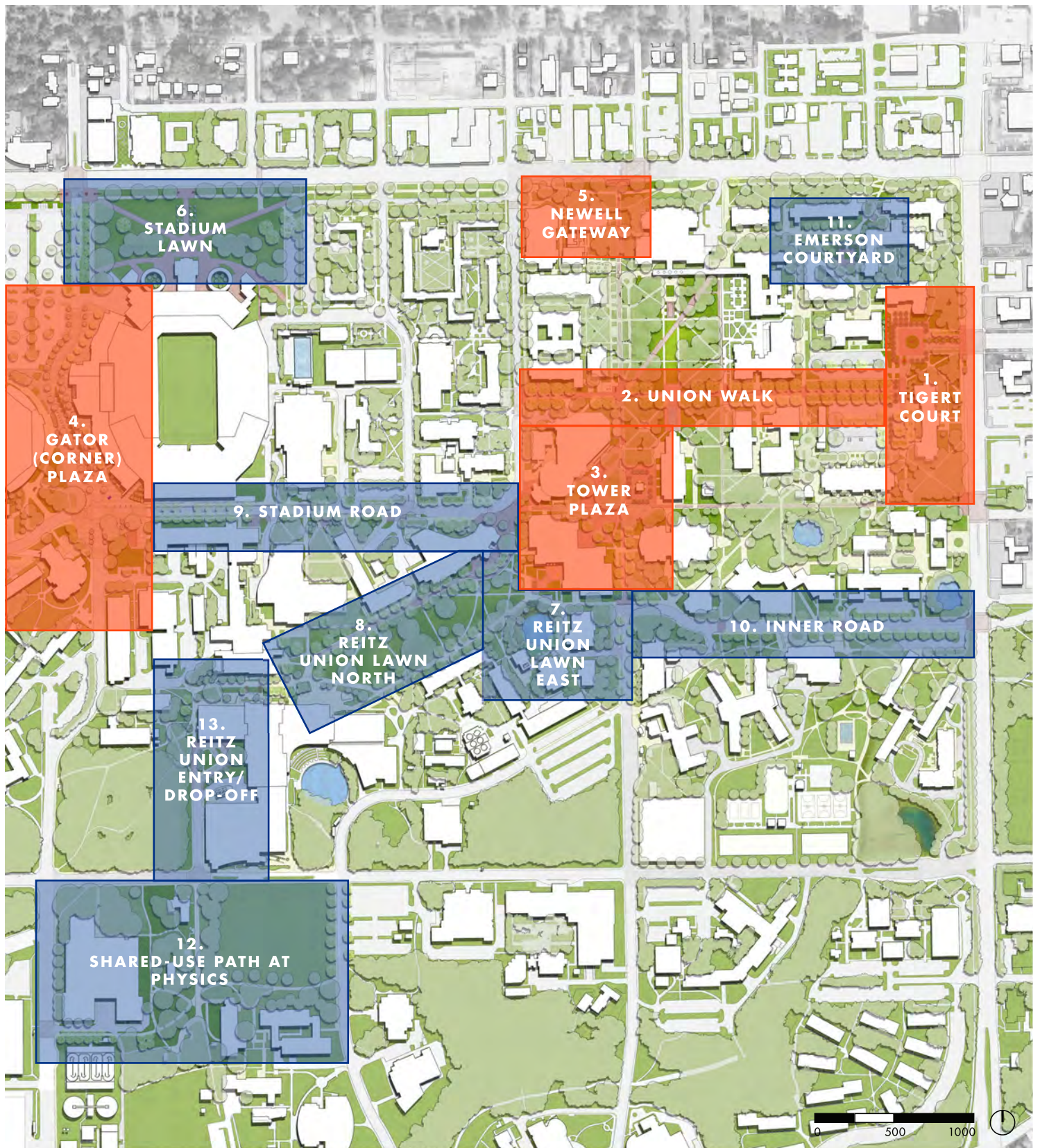


An aerial photograph of a university campus, featuring a large, multi-story building with a flat roof and numerous windows. The building is surrounded by lush green trees and a paved area with some parked cars. The entire image is overlaid with a semi-transparent blue filter. At the top and bottom edges, there are horizontal orange bars. The text 'SECTION 6' is written in white, bold, uppercase letters within the top orange bar. The title 'PRIORITY PROJECTS' is written in large, white, bold, uppercase letters across the center of the image. A paragraph of white text is located in the lower right quadrant of the image.

SECTION 6

PRIORITY PROJECTS

Thirteen Priority Projects have been selected for their contribution to the University's pursuit of preeminence, either through their transformative design or through their establishment of an important campus standard.



Four of the thirteen Priority Projects were identified in the Strategic Development Plan as civic squares—spaces that would significantly enhance the campus by defining campus portals and creating memorable places for large gatherings. To these four transformative projects, the Landscape Master Plan has added the Union Walk project for the role that it will play in transforming the core of the campus into a pedestrian realm.

The thirteen Priority Projects are listed below and located on the preceding map. The five transformative projects are identified in orange. In the following pages, each project is described through a rendered plan and one or more views that convey the impact of the finished project. A preliminary cost analysis of all of the projects is provided in the Appendices.

- 1.** Tigert Court
- 2.** Union Walk
- 3.** Tower Plaza
- 4.** Gator (Corner) Plaza
- 5.** Newell Gateway
- 6.** Stadium Lawn
- 7.** Reitz Union Lawn - East
- 8.** Reitz Union Lawn - North
- 9.** Stadium Road
- 10.** Inner Road
- 11.** Emerson Courtyard
- 12.** Shared-Use Path at Physics
- 13.** Reitz Union Entry/ Drop-off

1

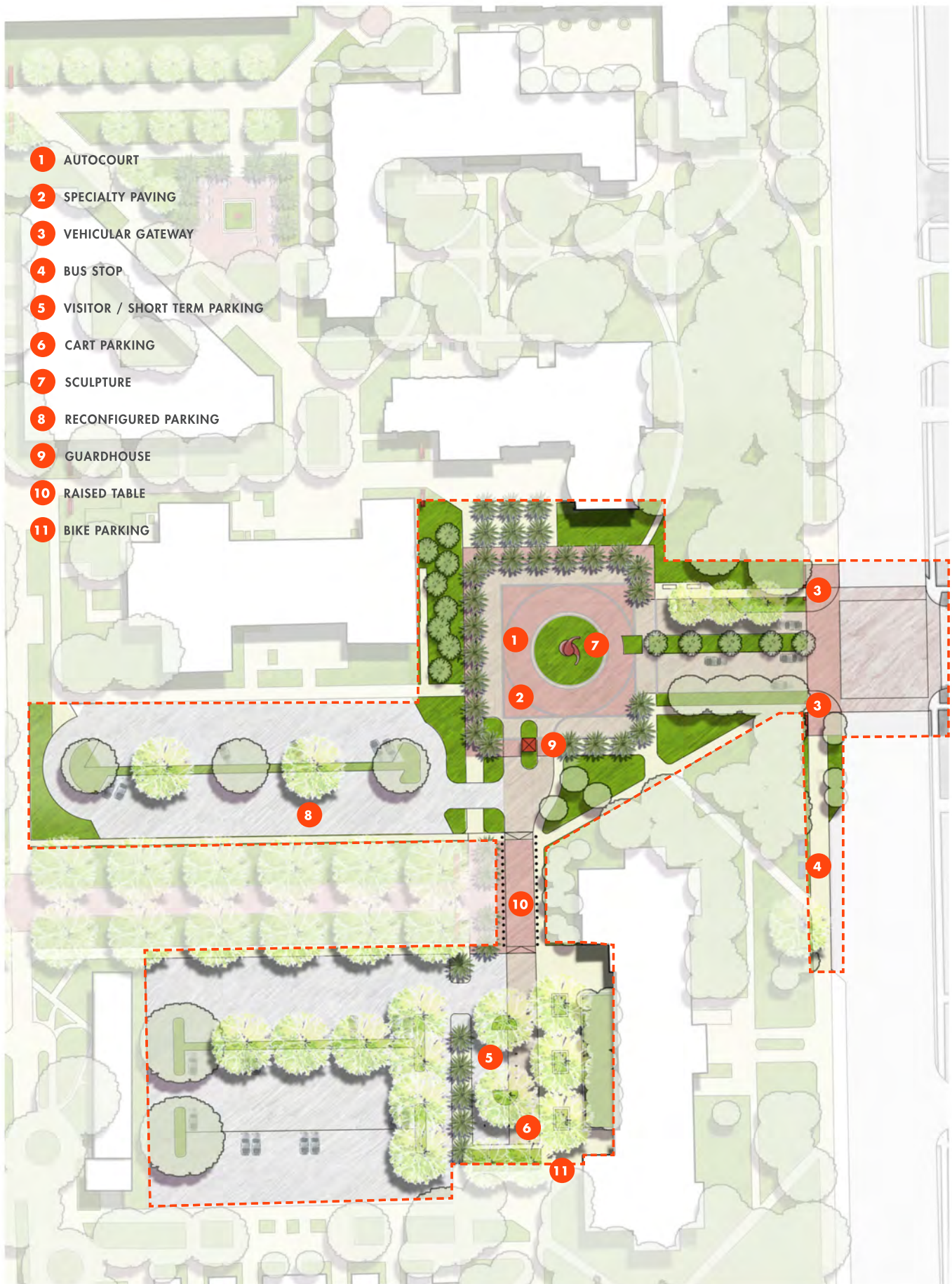
TIGERT COURT

The Strategic Development Plan identified the campus gateway at 2nd Avenue as the major connection to the Innovation District of downtown Gainesville. The creation of Tigert Court just inside the gateway serves to expand the impact of the gateway, announcing the campus, welcoming the casual visitor, and orienting guests to the parking facilities beyond. The result is a positive first impression of the campus generated by quality materials, organized facilities for parking and drop-off, a well-maintained and clarified landscape, and the introduction to the pedestrian-centric campus beyond the pedestrian gate at the end of Union Walk.



A transformed Tigert Court creates a welcoming link between the campus and Downtown





The Court creates an inviting pedestrian connection to the campus core



The threshold to the transformed Union Walk lies just beyond Tigert Court



The project welcomes University visitors with an enhanced landscape on the west side of Tigert Hall



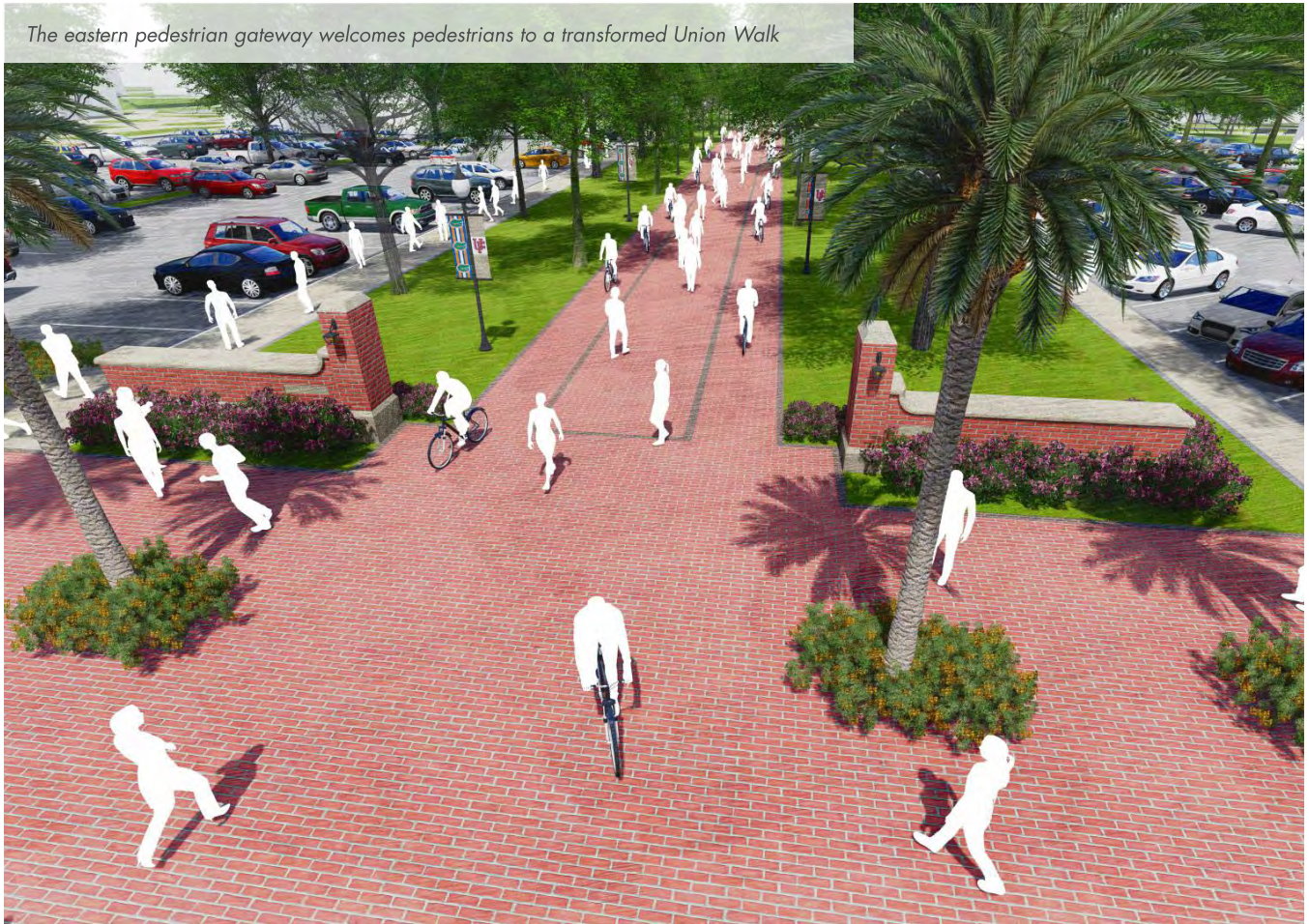
2

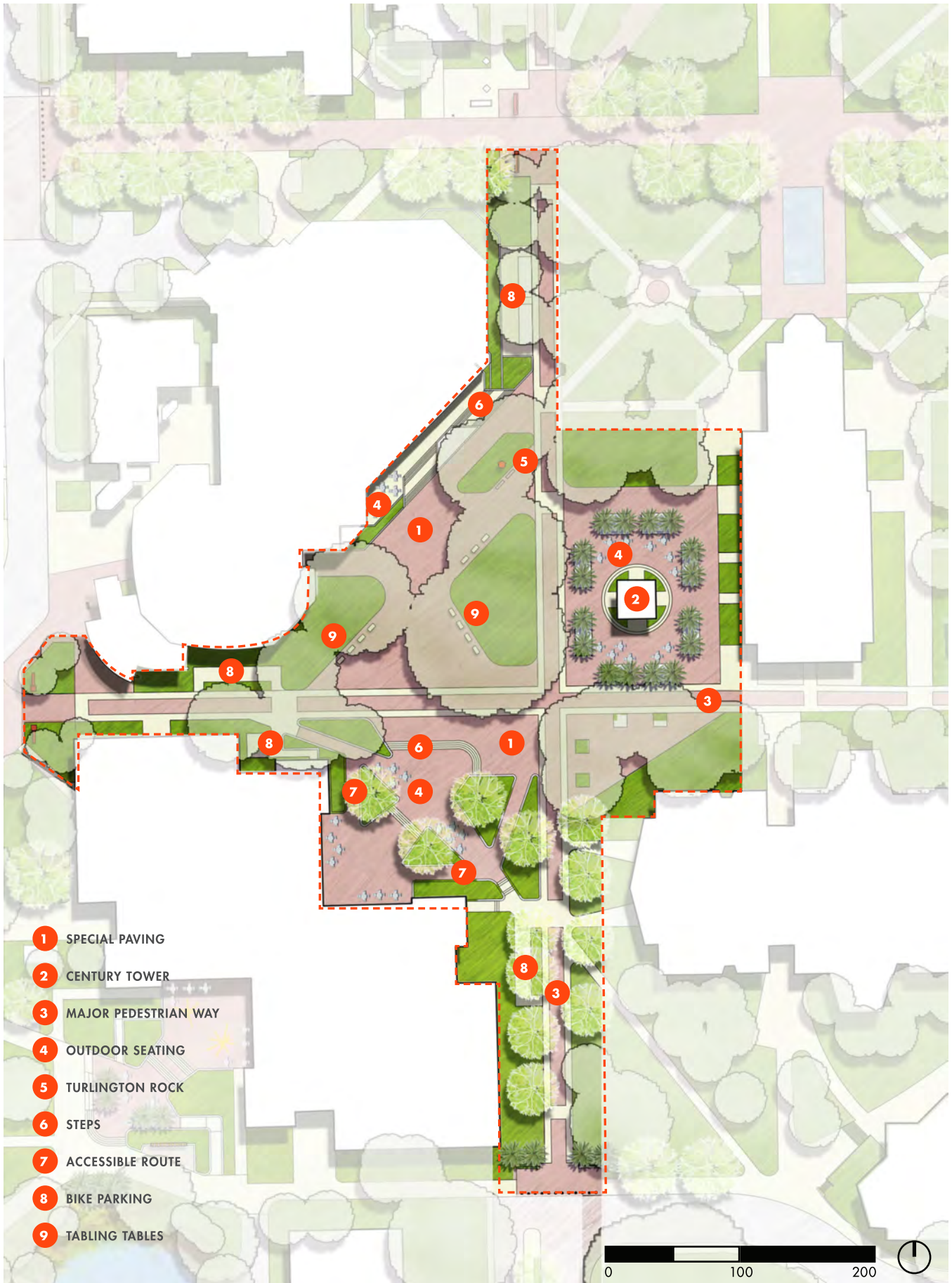
UNION WALK

The conversion of Union Road to a major pedestrian way would be a transformative step for the University. With the elimination of all but emergency and service vehicles from Union Road, the division between the Plaza of the Americas and the open space surrounding the Auditorium can be removed. This removal will greatly expand the value of the Plaza of the Americas and increase the amount of contiguous open space on the campus. In addition, with these enhancements and the proposed improvements at Tigert Court, the first impressions of the campus for those passing through the 2nd Avenue gateway will establish UF as a preeminent campus.



The eastern pedestrian gateway welcomes pedestrians to a transformed Union Walk





TOWER PLAZA



The space between Century Tower, Turlington Hall and CSE/Marston Library is undoubtedly the most active space on the UF campus. The centerpiece of the space, the iconic Century Tower, however, is separated from the space and relegated to a small corner of open space due to the traffic along Newell Drive. With the continued conversion of Newell Drive to a pedestrian corridor, Century Tower can become incorporated into this grand campus plaza. The regrading of the plaza to ensure universal access and its replanting to improve sight lines and increase shade will enhance the space for large and small group gathering, performances, and tabling.

The new plaza creates an integrated space that accommodates a variety of activities



A new plaza incorporates and celebrates Century Tower



A pedestrianized Newell Drive reconnects the new plaza to the Auditorium and Plaza of the Americas



A redesigned entry to Turlington Hall creates spaces for gathering



A welcoming entry to Turlington Hall replaces walls with steps



An intimate space for gathering and performances surrounds Century Tower



4

GATOR (CORNER) PLAZA

The northernmost block of Gale Lemerand Drive and the spaces surrounding the intersection of Gale Lemerand Drive and Stadium Road must meet the needs of daily use by the UF community as well as the unique celebratory role that they must play on the seven Saturdays in the fall. On these seven Saturdays, the area becomes the focus of game day activity and the face of UF to campus visitors and alums. Along with a tabled intersection, the special paving that unites the pedestrian and vehicular zones communicates the intensive pedestrian use of the space to motorists throughout the year. On game days, the unified pavement serves to connect the stadium with the O'Connell Center and the plaza areas south of Stadium Road to create one large civic space. The area will be the setting for a future Champions Walk, with each of the four corners of the intersection honoring UF alums and celebrating important aspects of Gator life—Academics, Student Life, Arts and Culture, and Athletics.



A redesigned Gator (Corner) Plaza incorporates the four corners of the intersection into one civic square

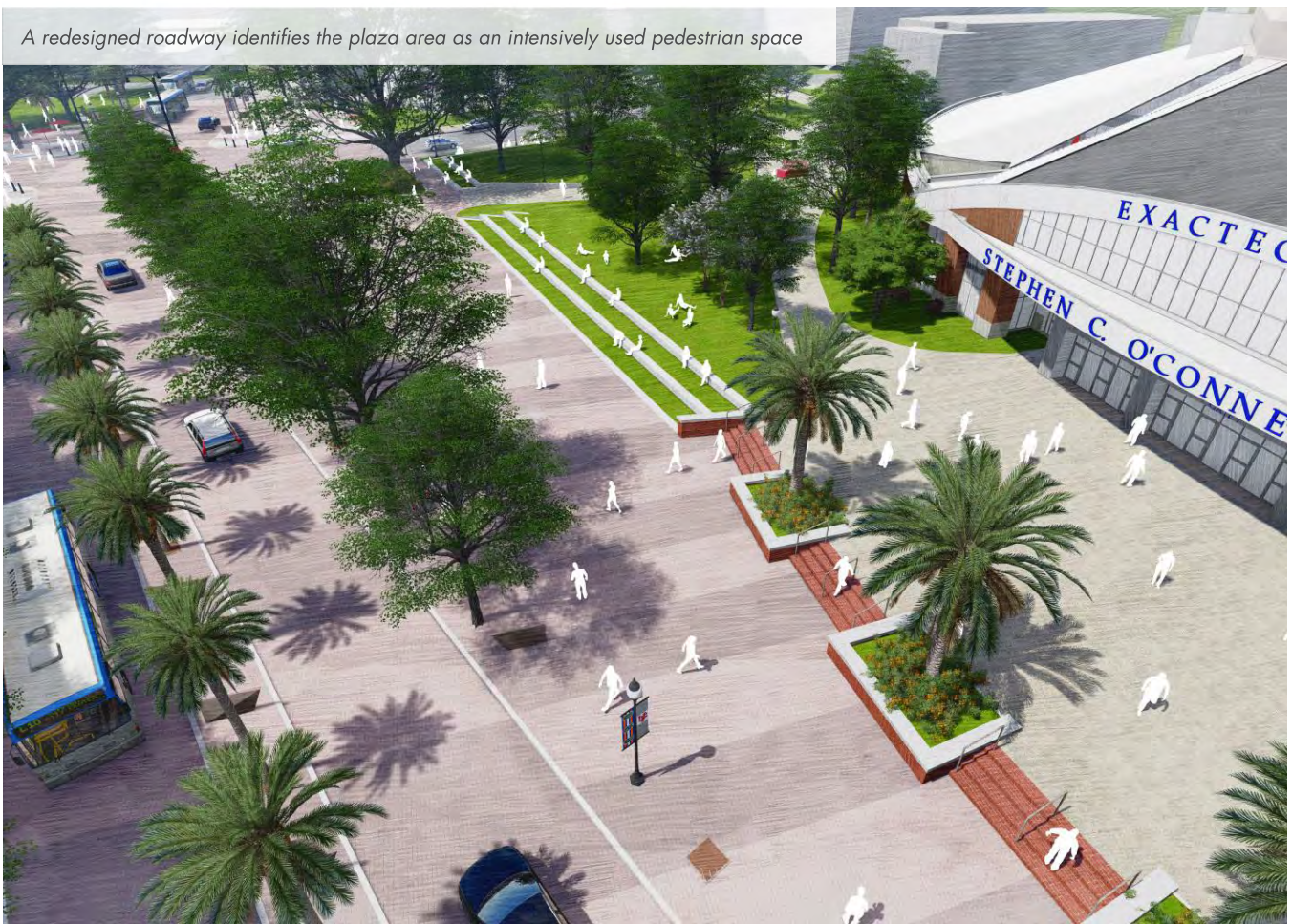




Special paving unites the vehicular and pedestrian zone



A redesigned roadway identifies the plaza area as an intensively used pedestrian space



4. GATOR (CORNER) PLAZA

Sitting steps provide a respite on game days and regular days



Sitting steps create a vantage point for viewing game day and regular day activities



The plaza connects the O'Connell Center and the stadium to create one large civic space on game days



5

NEWELL GATEWAY

The Landscape Master Plan proposes a unified family of gateways to present a welcoming face to campus visitors. The proposed primary pedestrian gateway is incorporated here at the intersection of Newell Drive and West University Avenue to convey Newell Drive's conversion to a pedestrian way and to welcome pedestrians into the campus. The gateway also frames one of the most appealing long views of the campus. Coordination with the City to rethink the pedestrian crossings along West University Avenue has informed the design of the gateway in an effort to promote pedestrian safety and the use of the improved future pedestrian crossing.

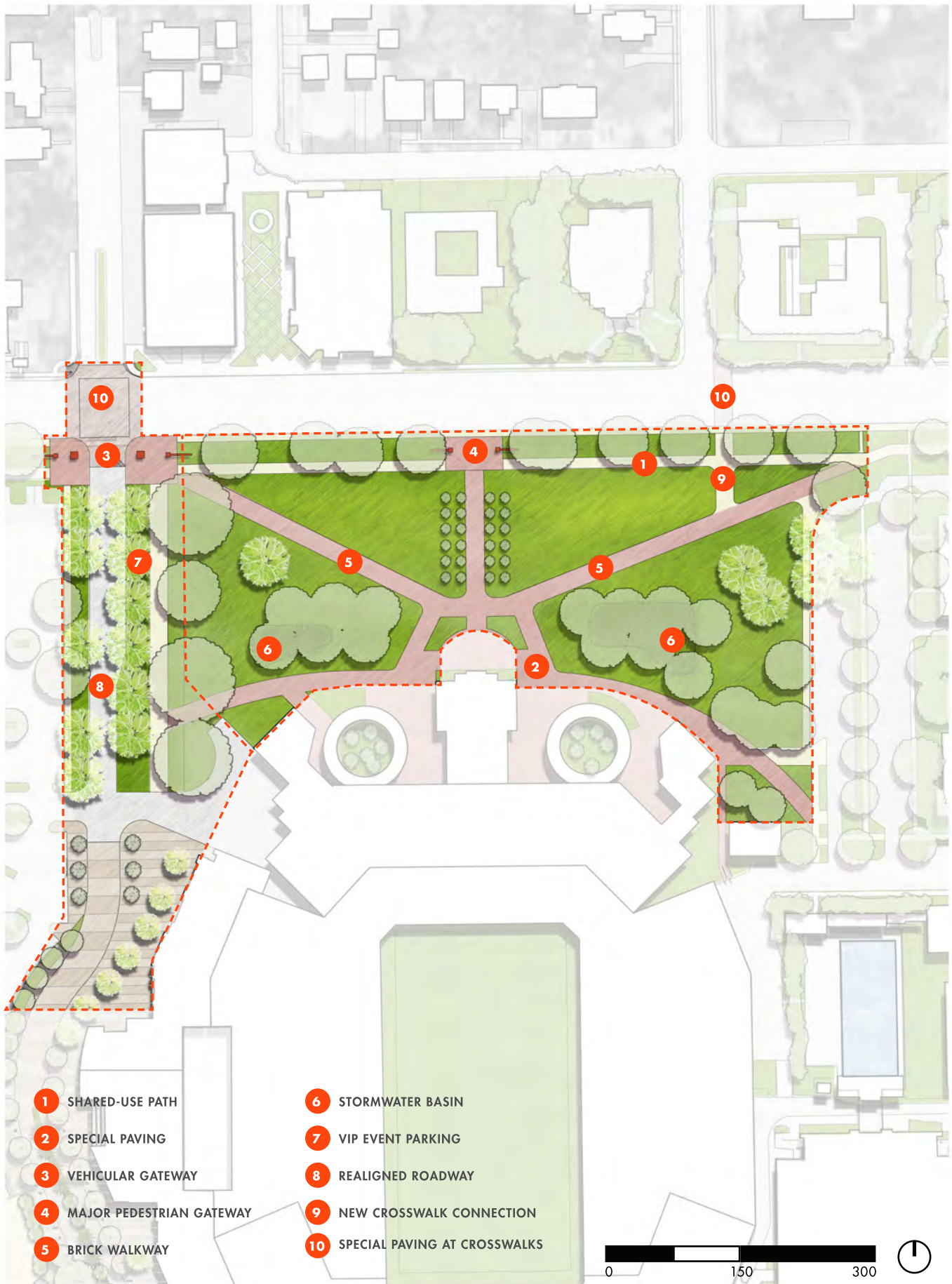


The new gateway marks the beginning of a major pedestrian way through the heart of the campus

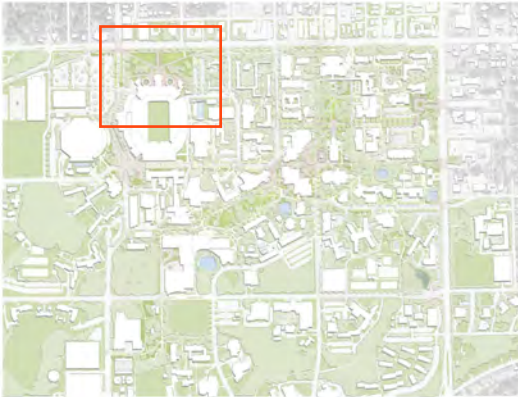


A new welcoming gateway invites pedestrians into the campus core





STADIUM LAWN



Like Gator (Corner) Plaza, the open lawn north of the stadium is required to wear two hats. For seven Saturdays of the year, the space is ideally situated to provide services to the game day crowds and to become a hub of game day excitement. For the rest of the year, the space plays a key role in establishing positive first impressions for campus visitors arriving from the west or the east along West University Avenue. Renovating the lawn to support its intensive use on game days and promote its rapid recuperation is key to its ability to convey a good impression. The proposed shifting of Gale Lemerand's intersection with West University Avenue to align with N.W. 20th Terrace will improve vehicular circulation and expand the size of this significant campus space.

New walkways through Stadium Lawn connect to new crosswalks across West University Avenue



A renovated lawn creates a memorable first impression for visitors arriving from the east and the west



A welcoming gateway celebrates this significant aspect of Gator life



A renovated lawn accommodates a multitude of Game Day activities



The gateway announces the lawn as the hub of Game Day activity



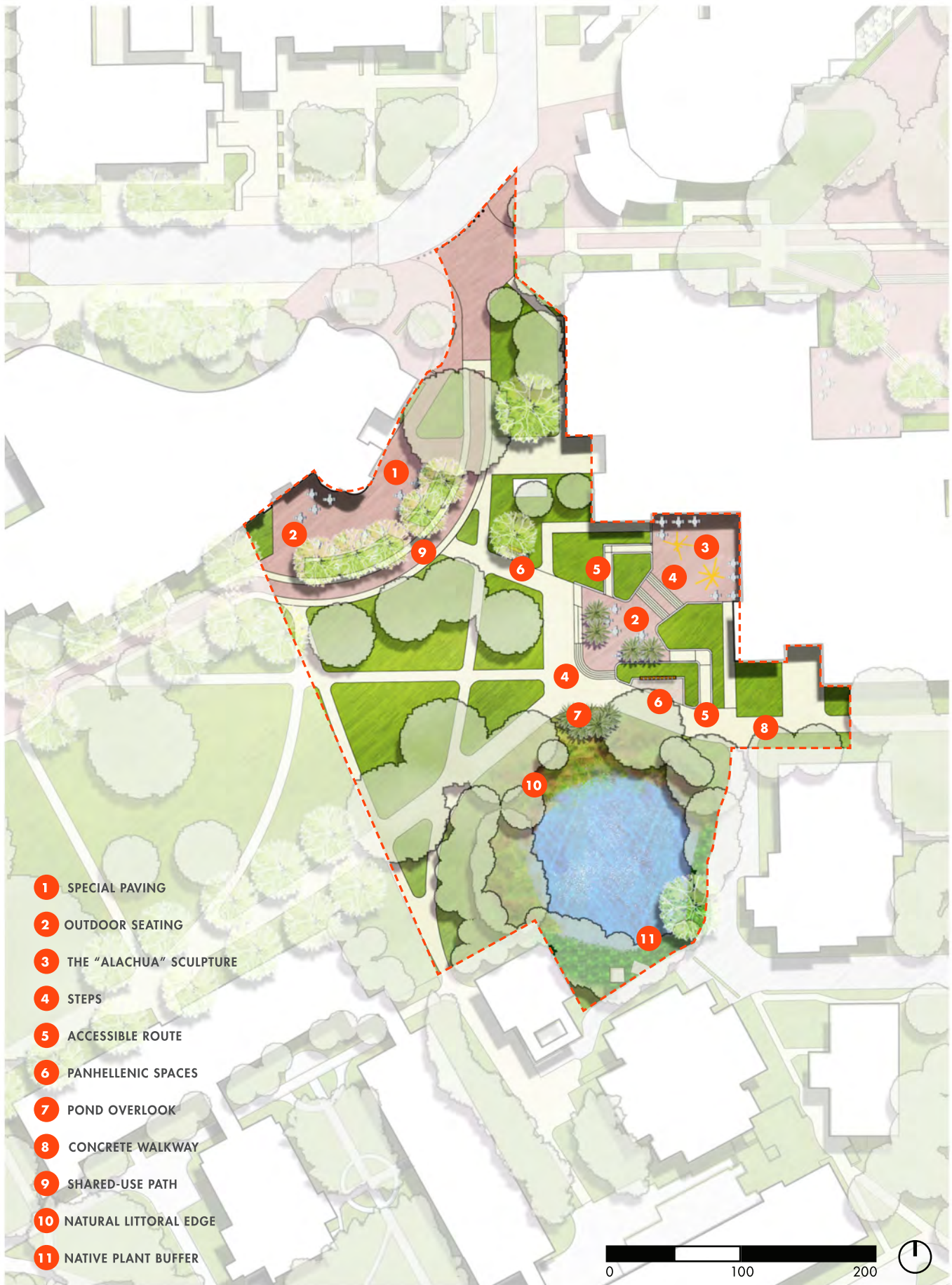
REITZ UNION LAWN - EAST

The length of the Reitz Union Lawn and its location at the heart of UF renders it as a unique feature on the UF campus. Passing through the portal formed by the CSE and Marston Library and the Alachua sculpture, one should be greeted by a view of this impressive space and invited to linger in spaces that feature the view. The improvements to the eastern end of the lawn reflect the proposed design on the north side of the CSE and Marston Library and provide spaces for small group gathering as well as performances. Nearby spaces support the activity of the area—an enhanced plaza outside the HUB, two special panhellenic spaces, and an overlook on Dairy Pond. The replanting of the Pond's banks with native riparian plantings, especially on the south side where a native plant buffer can screen the adjacent back-of-house facilities, converts this natural feature into an asset, giving a special character to this end of the Reitz Union Lawn.



The project transforms the eastern end of the Reitz Union Lawn into a nexus of circulation and activity





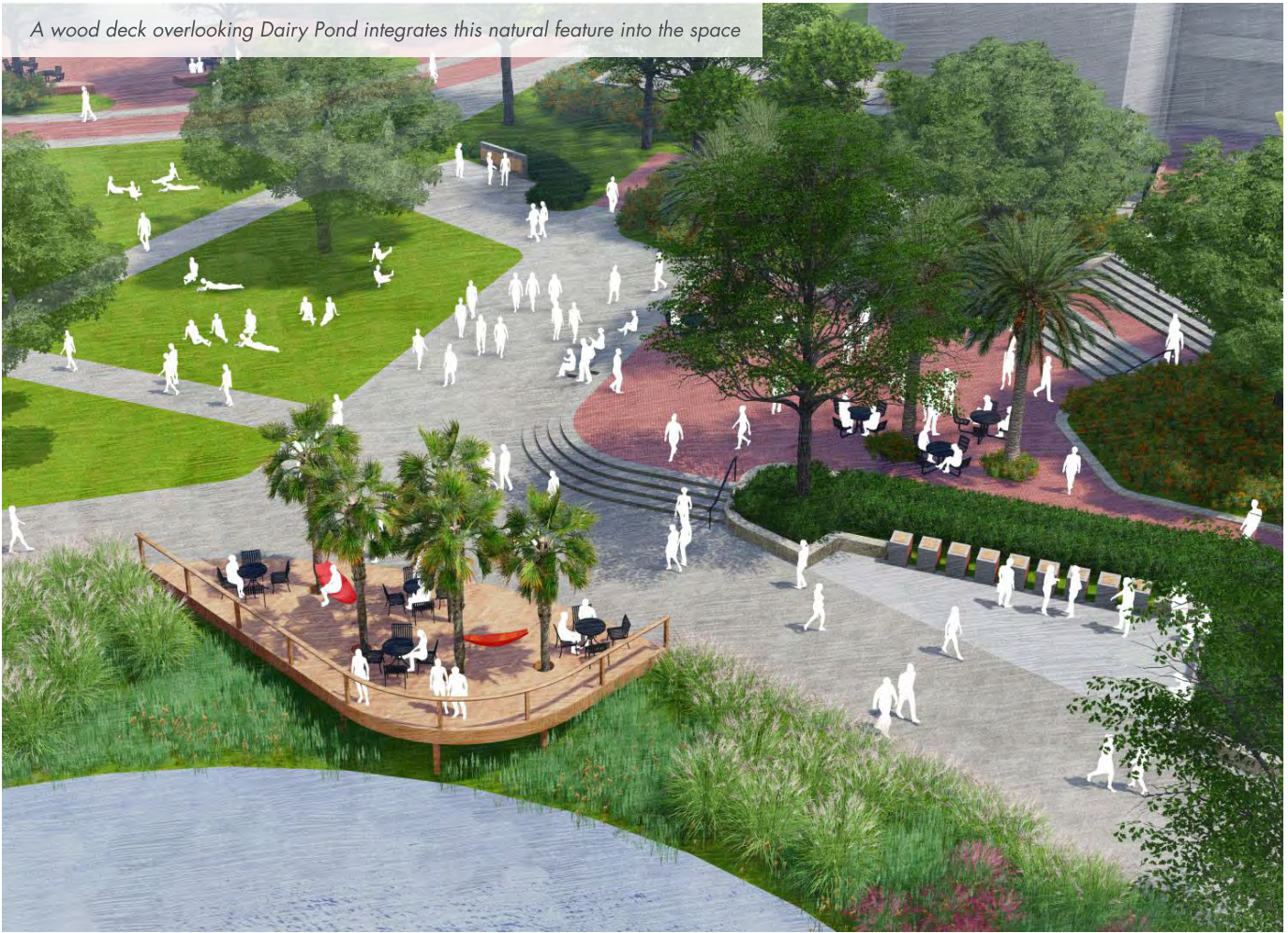
The terrace at the CSE and Marston Library accommodates gathering and performances



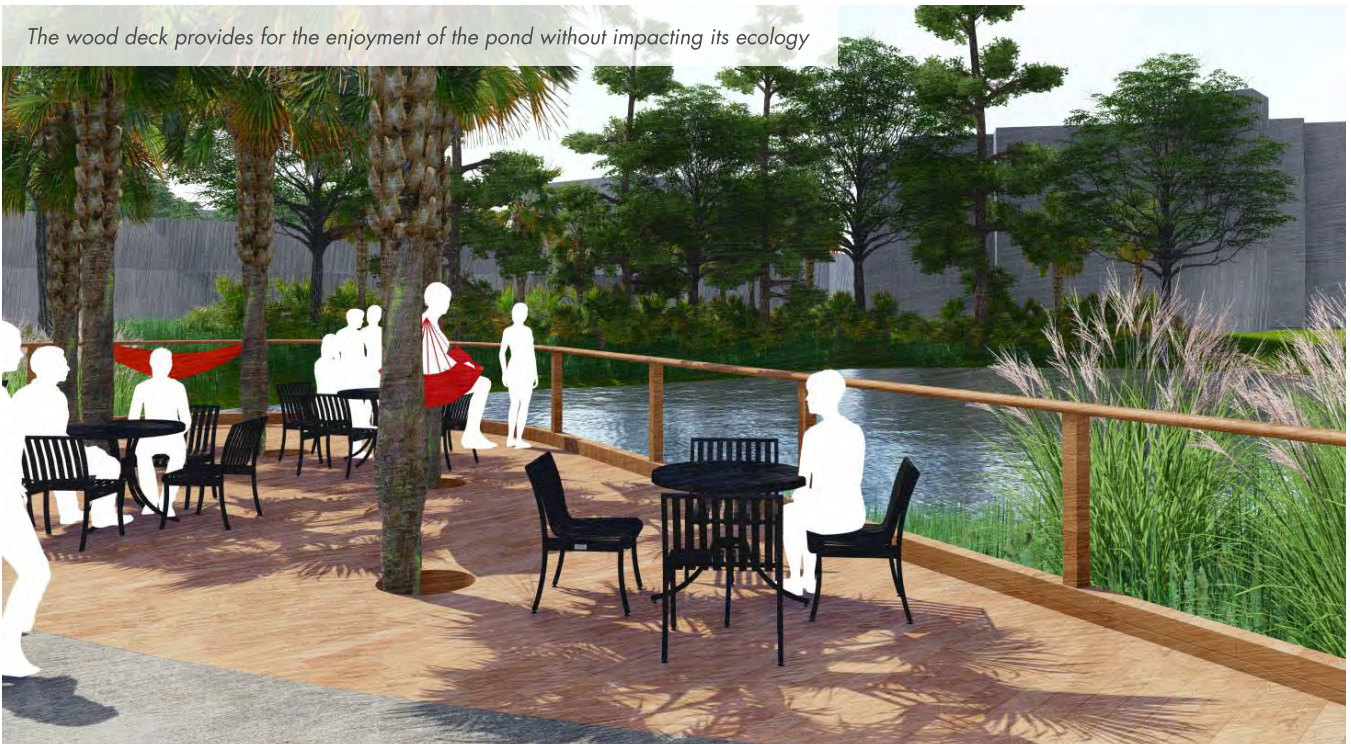
A redesigned terrace at the CSE and Marston Library creates an exciting introduction to the Reitz Union Lawn



A wood deck overlooking Dairy Pond integrates this natural feature into the space



The wood deck provides for the enjoyment of the pond without impacting its ecology



Before—The northern walkway of the Reitz Union Lawn today



After—An enhanced northern walkway of the Reitz Union Lawn



REITZ UNION LAWN - NORTH



The impressive length of the Reitz Union Lawn is difficult to appreciate from either end of the space as well as along its edges. Small and low-branching trees have been planted in its center obstructing views through the space. The walkways at its edges lack shade-providing, space-making, and space-defining large canopy trees. With the linkage of this space to the heart of the historic campus through the pedestrianizing of Newell Drive, it will be important to bring the Reitz Union Lawn up to the quality of the renovated Plaza of the Americas. Careful placement of new canopy trees, regrading and rejuvenating the lawn, and new pavement in keeping with the Reitz Union Lawn Master Plan of 2014 will help to achieve this transformation, with the final step accomplished by the creation of activating building entrances along its edges.



Before—Looking east along Stadium Road today



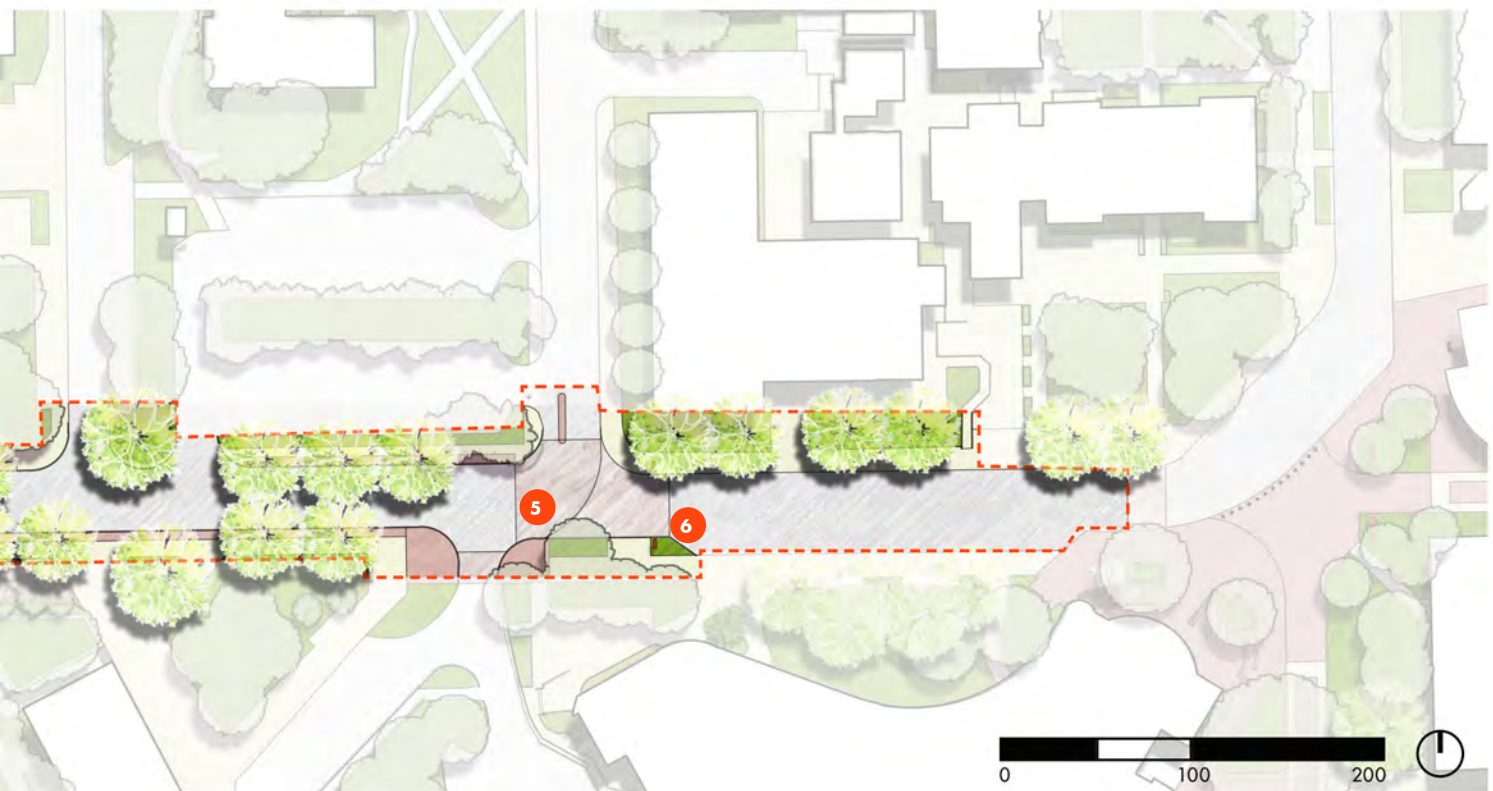
After—Looking east along an improved Stadium Road



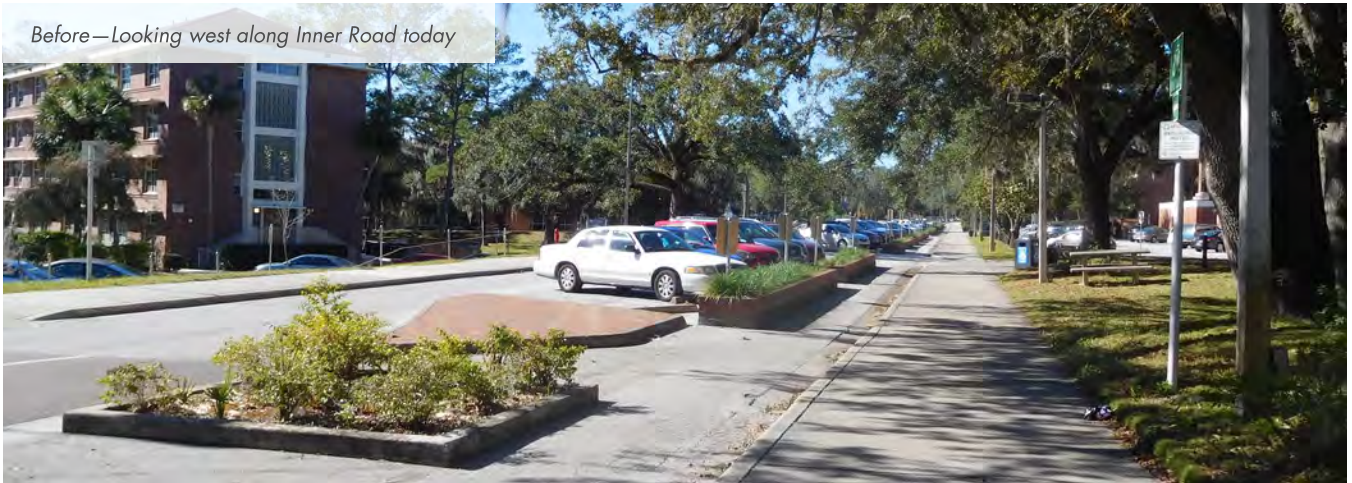
STADIUM ROAD



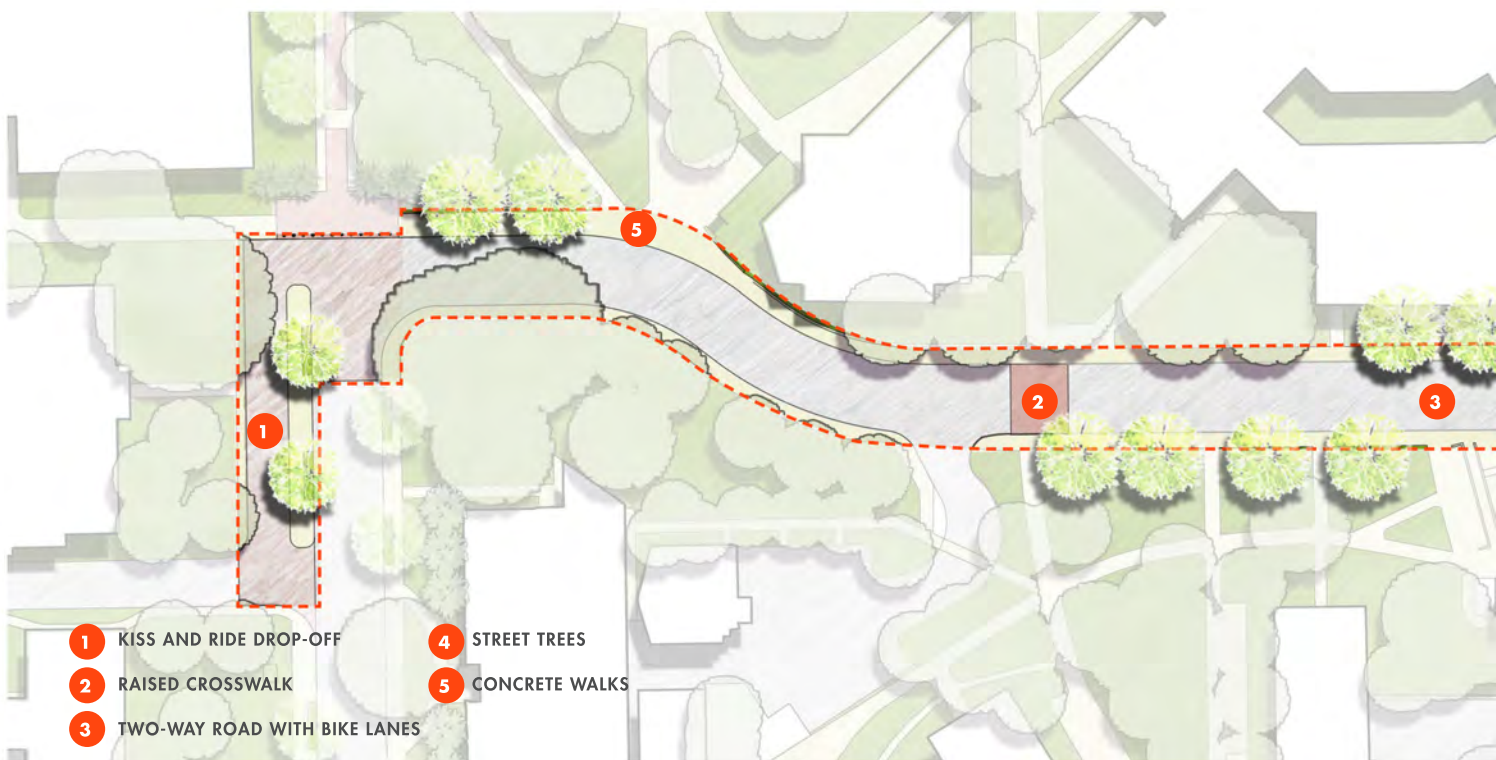
Stadium Road is a well-traveled corridor by all modes of travel, yet it fails to accommodate pedestrians satisfactorily, lacking shade trees for much of its length. In addition, its varied edges create visual clutter for users of all modes of travel. The proposed improvements address these two issues with the reappropriation of the corridor's width, providing lanes for vehicular and bike travel separated from an ample pedestrian way by a planting, infiltration and furnishings zone. In addition to an organizing structure for signage and furnishings as well as street tree plantings, this zone also identifies areas for curbside stormwater planters, recalling the course of an original flow way on the campus.



Before—Looking west along Inner Road today



After—Looking west along an enhanced Inner Road



INNER ROAD



The transformation of the core campus to a pedestrian realm is achieved through the clear redirection of vehicular traffic to Inner Road and its conversion to two-way traffic to allow for vehicles to enter as well as leave the campus on this corridor. The current road width accommodates this conversion along with the inclusion of bike lanes for most of its length. Its minor expansion to the north along its western end is accompanied by the addition of a secondary pedestrian gateway identifying Newell Drive north of Inner Road as a major pedestrian way. Current kiss-and-ride use near this intersection is accommodated by a new drop-off loop in front of the Aquatic Food Products Pilot Plant Building. Eliminating and combining some of the many intersecting ways on the north and south sides of the road is important to the redirection of pedestrian and bike traffic to designated and safe crossing points.





EMERSON COURTYARD



Located within the heart of the College of Business and adjacent to an informal entry point to the campus along West University Avenue, Emerson Courtyard has an important role to play in the forming of impressions of the College and the University. The historic architecture and mature canopy trees that define this comfortably sized space provide the key components of well-designed academic spaces. A simplification of the grading, planting and paving, along with a clarification of circulation and gathering spaces will enhance this popular area for studying and meetings. Its enhancement will extend the positive impact of adjacent spaces including the Plaza of the Americas.

Before—Emerson Courtyard today



After—An enhanced Emerson Courtyard



12

SHARED-USE PATH AT PHYSICS

The construction of a new parking garage south of the existing garage on Gale Lemerand Drive will increase the demand for an accessible and attractive shared-use path linking the garage to Museum Road and campus points to the east. The unlikely passage through the vehicular and service-oriented space between the Physics Building and the University's Water Reclamation Facility can be made more amenable as a pedestrian and bike corridor through the shifting of the drive and some utilities to create a clear, direct, and tree-lined path through the space. The new trees, selected shrub plantings, and the replacement of the existing chain link fence with the campus standard black aluminum fence will help elevate the space from a back-of-house space to a campus corridor.



Before—Looking east between the Physics Building and UF's Water Reclamation Facility today



After—Looking east between the Physics Building and UF's Water Reclamation Facility

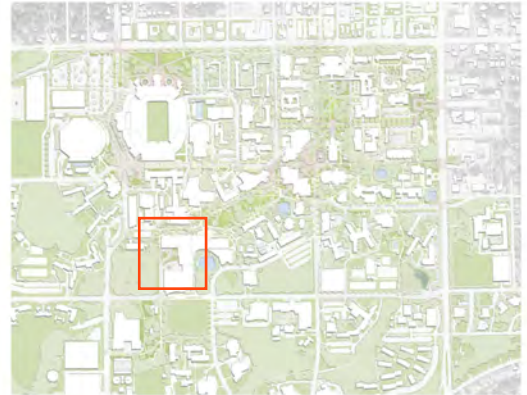




13

REITZ UNION ENTRY/ DROP-OFF

For visitors seeking campus parking at the Reitz Union garage or those coming to the Reitz Union Hotel, the landscape on the west side of the garage and the Union may be the first campus landscape that they experience as a pedestrian. It is important that this vehicular area be redesigned to accommodate and welcome pedestrians and provide a clear and accessible route from the garage to the Union. Along with the preceding priority project, linking this new pedestrian realm northward to the Reitz Union Lawn and southward to Museum Road will complete a shared-use path from the historic campus to the new parking garage at Gale Lemerand Drive.



A redesigned terminus to Reitz Union Drive creates a positive first impression for visitors





