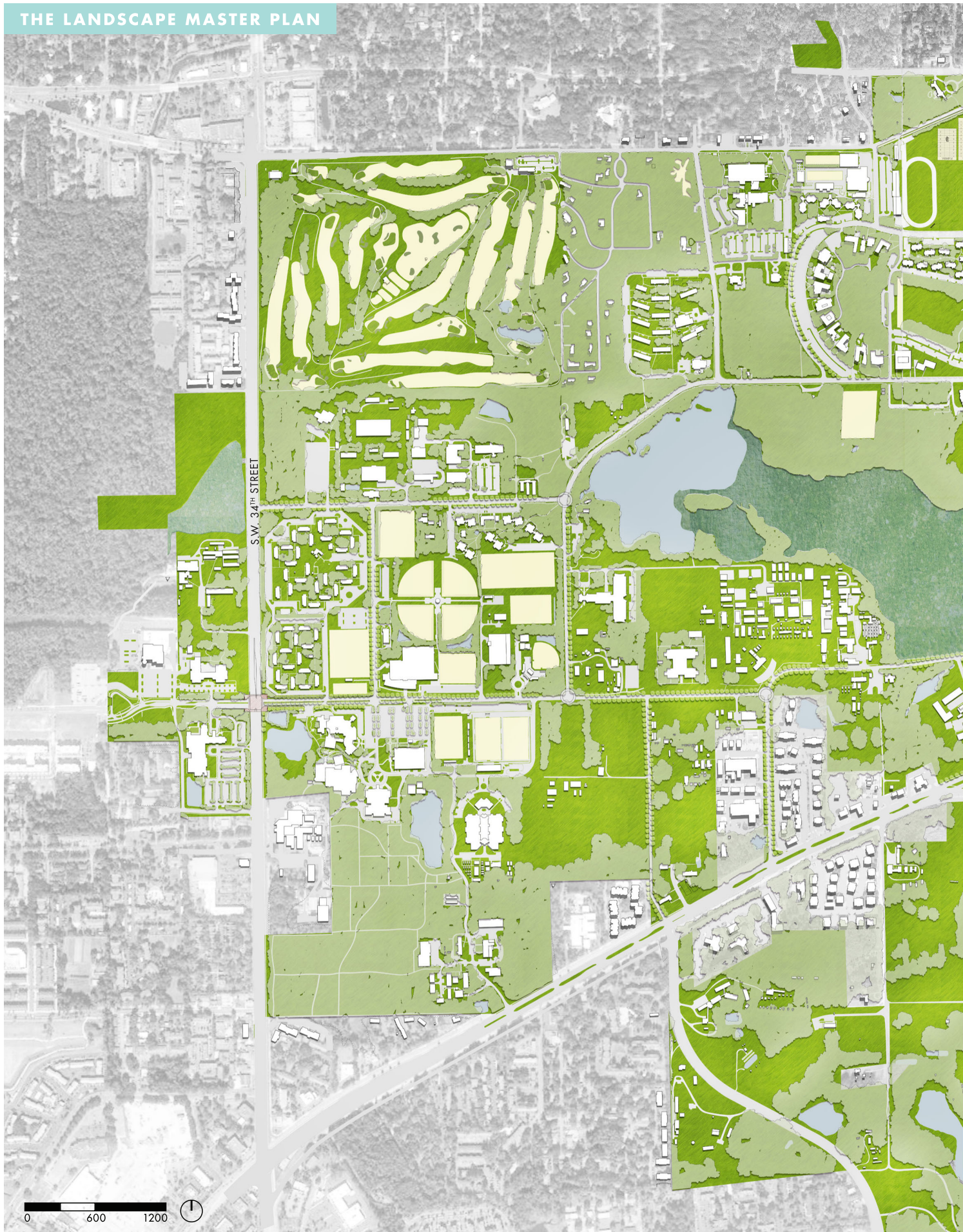


The background of the page is a blue-tinted illustration of a campus landscape. It features various elements such as trees, walking paths, benches, and stylized human figures. The illustration is rendered in a sketchy, artistic style. At the very top and bottom of the page, there are horizontal orange brushstroke-like borders.

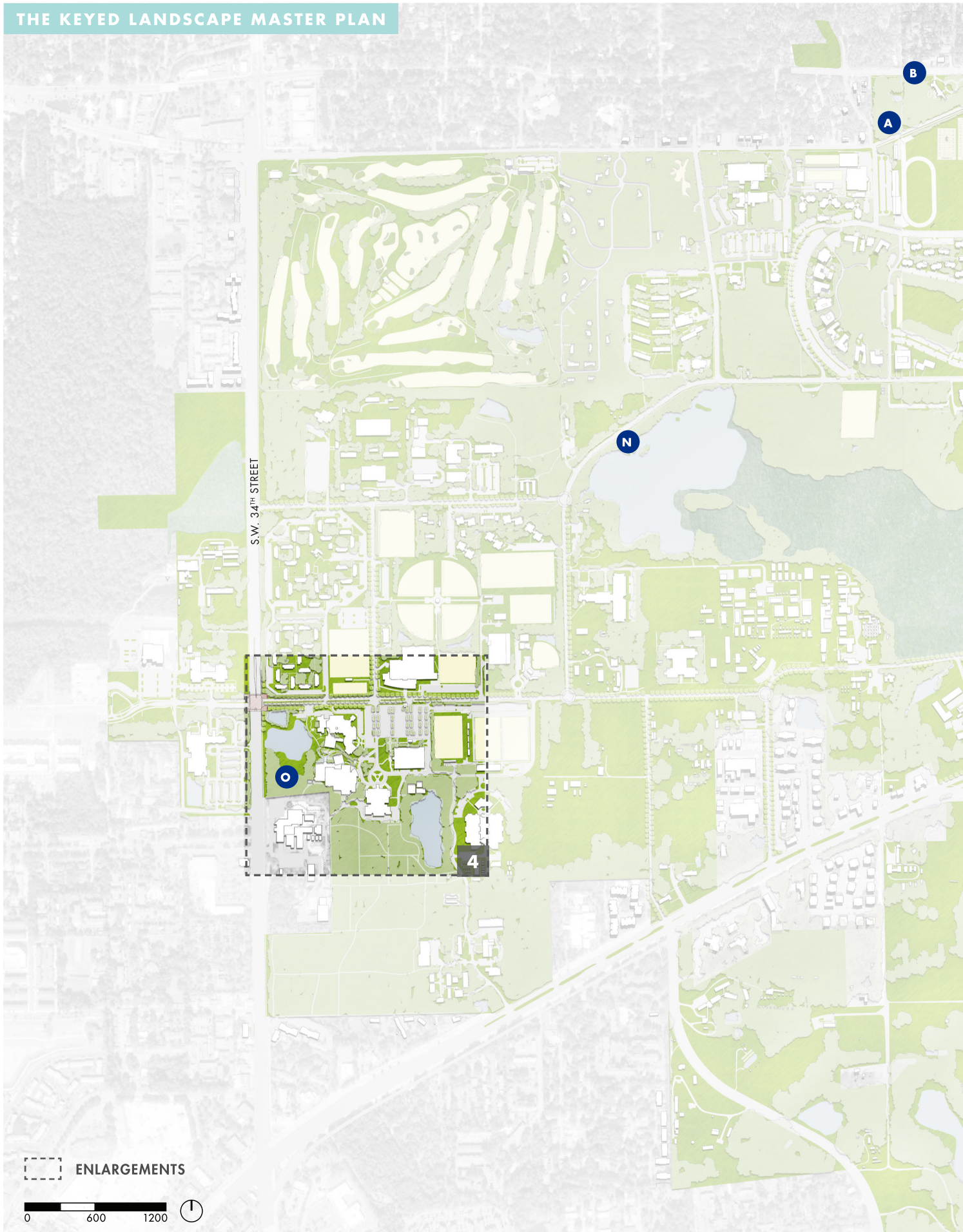
SECTION 3

THE LANDSCAPE MASTER PLAN

The Landscape Master Plan addresses all of the UF campus through a variety of tools—a graphic plan, landscape design guidelines, campus typologies, enhancement project descriptions, priority projects, and landscape design standards. The following graphic plan, the first tool of this report, conveys only a portion of the many recommendations for the campus—those that can be depicted in a single view of UF’s large campus.

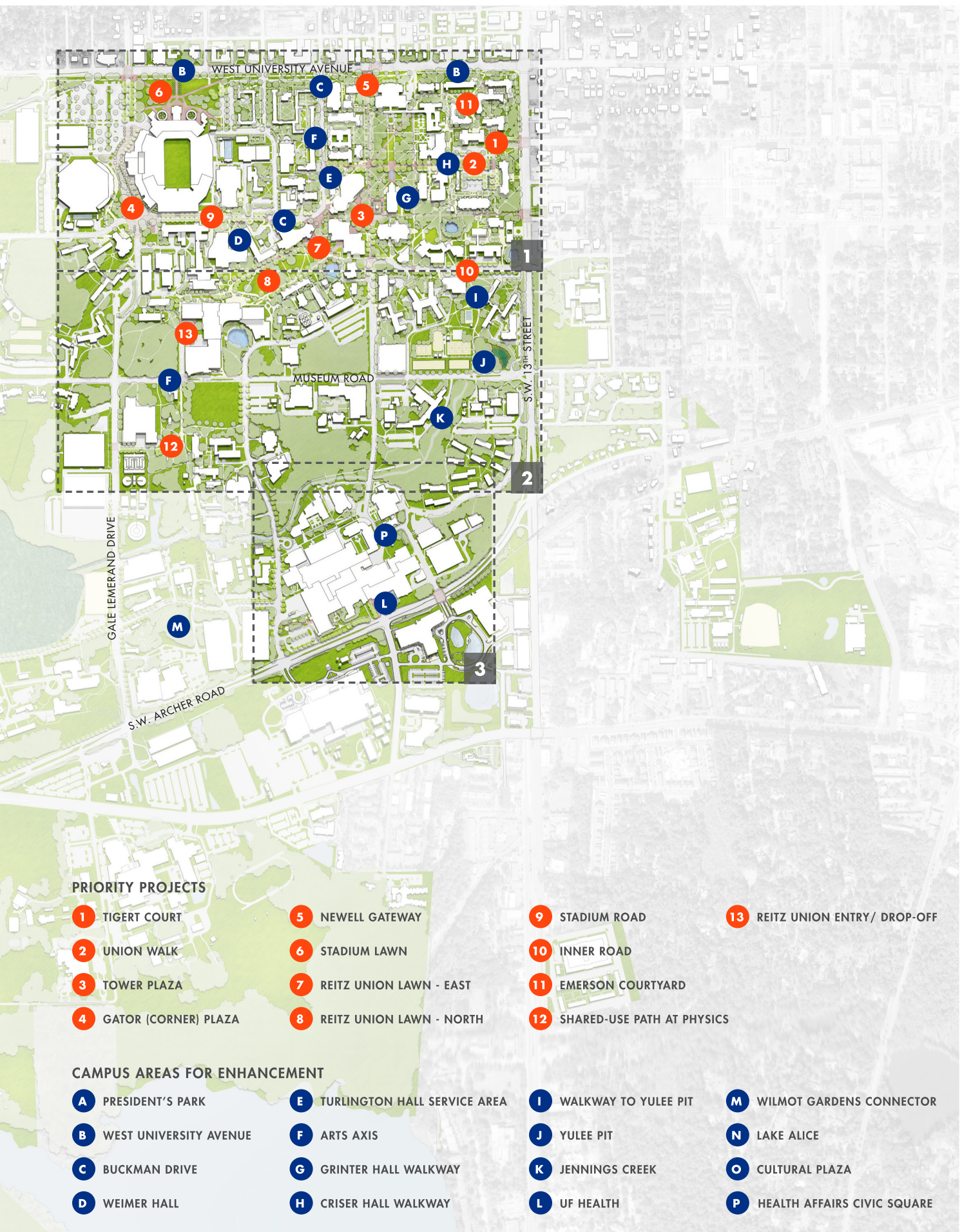






ENLARGEMENTS

0 600 1200



Campus Areas for Enhancement

In addition to the recommended improvements for the thirteen Priority Projects, numerous other areas of campus have been addressed as part of this Landscape Master Plan. These areas are located on the preceding plan, and their enhancements are described below.

A PRESIDENT'S PARK

Clear the understory of President's Park to remove invasives to establish walking paths along the creeks. Protect mature trees and consider the addition of lawn areas to support the area's use as a neighborhood park.

B WEST UNIVERSITY AVENUE



Create a softer and more welcoming campus edge along West University Avenue through a phased approach. Plant the back of the low brick walls with a dense planting of a simple palette of low-growing shrubs, such as azaleas. Plant beds should reflect the locations of safe pedestrian movement and road crossings; these may differ in size and location from the current openings to West University Avenue. When the shrub mass has achieved a density to be a sufficient deterrent to pedestrian traffic, remove the low brick walls, retaining only the gateways and the associated gateway walls. With the removal of the low brick walls along West University Avenue, the landscape character of this roadway will establish the campus edge treatment for the north and east sides of the University.

On the western end of University Avenue, from Stadium Lawn to N.W. 22nd Street, where the campus edge is not marked by the low brick walls, enhance the campus edge with a dense planting of the same simple palette of low-growing shrubs, such as azaleas.

Add a single service drive parallel to West University Avenue that connects Buckman Drive with the parking west of Murphree Hall. Provide for a single row of parallel parking on the south side of the

drive. The drive will allow vehicles that have turned onto Buckman Drive at restricted times to use the service drive to reenter West University Avenue.

C BUCKMAN DRIVE

Communicate the restricted use of Stadium Road and Buckman Drive east of Fletcher Drive through the addition of a threshold gateway (*See Section 5, Campus Gateways Typology*) flanking Stadium Road just beyond its intersection with Fletcher Drive. Raise the crosswalk to create a tabled crossing in front of the gateway, arcing to describe the appropriate left turn onto Fletcher Drive. At the intersection of Buckman Drive and West University Avenue, alert vehicles to the restricted use of Buckman Drive with the addition of a second threshold gateway just south of the single service drive connecting Buckman Drive with the parking west of Murphree Hall. This location will allow vehicles that have turned onto Buckman Drive at restricted times to use the service drive to reenter West University Avenue.

Begin a phased approach to the replanting of Buckman Drive with the replacement of the hollies within the furnishing zone at the back of curb with Shumard oaks. Once these trees have established a sufficient canopy, remove the existing Shumard oaks at the back of the sidewalk, which are nearing the end of their lifespan, and replace them with lower-growing flowering trees.

D WEIMER HALL

Create a more welcoming and visible entry to the School of Journalism from Stadium Road through the removal of tall understory plantings and the simplification of walkways, removing infill pavement. Create discrete locations for tables with umbrellas for gathering and study. Clarify and organize bike parking by removing it from alongside the entry walk and expanding bike parking flanking a new walkway connecting the entry to Williamson Hall. Soften the building face to the right of the entry with a strip of low planting. Recall the original water course along Stadium Road and gently shape the site's landform to create a bioswale and rain garden to collect on-site stormwater.

E TURLINGTON HALL SERVICE AREA



Minimize the impact of the Turlington Hall service area on the transformed Union Walk and Buckman Drive while maintaining the filtered views from adjacent buildings. Relocate the entry from Union Road to accommodate service access, remove the circular structure, and reorganize the parking to accommodate ADA-compliant parking spaces. Coordinate this effort with the plan for the conversion of the loading dock to a terrace to support the proposed change in its use.

F ARTS AXIS

Reinforce the connection between UF and the City with the celebration of the campus's art and cultural features through the creation of the Art Axis. *(See Section 4, Principle 1)* Look for opportunities to enhance the vehicular portion of the route as well as the walking portion in the campus core through the thoughtful addition of art to campus spaces and buildings.

G GRINTER HALL WALKWAY



Extend the paving pattern of a central brick walkway flanked by narrower concrete bands constructed at the front of Peabody Hall and Smathers Library southward to Stadium Road, passing in front of Grinter Hall. This will reinforce the extension of the Plaza of the Americas beyond the transformed Union Road and the connection of UF's signature open spaces—the Plaza of the Americas and Reitz Union Lawn. South of Stadium Road, adjust the alignment of the walkway to gently sweep eastward to mitigate the intrusion of the Music Building's loading dock and Steinbrenner Hall's accessible ramp on this important north-south pedestrian connection. Minimize the size and use of the loading area as much as possible to lessen its impact. Add planting to the south face of the retaining wall adjacent to the accessible ramp to soften its appearance when moving northward along this route.

H CRISER HALL WALKWAY

Enhance the northern portion of the highly used north-south secondary walkway connecting Matherly Hall with Inner Road and beyond. Minimize the impact of the Smathers Library service area with its reorganization, the shifting of the enclosing brick wall westward to reduce the opening of the service area, and possibly the addition of a gate at the opening. Use the opportunity provided by the shifting of the service area wall to realign the walkway, moving it further from Stuzin Hall and achieving a better relationship with the entry to Matherly Hall. Add canopy trees where utilities permit along the length of the walkway for the comfort of pedestrians. With the implementation of the Tigert Court enhancement, reorganize the Hough Hall parking area to minimize its intrusion on this walkway, while maintaining service access to Smathers Library and Stuzin Hall from the corner of the parking area.

I WALKWAY TO YULEE PIT

Extend the highly traveled north-south secondary walkway that originates at Matherly Hall on to Yulee Pit. Accommodate universal access from Inner Road to Yulee Pit east of Broward Dining Center through careful regrading, eliminating the awkward assemblage of accessible ramps. Blend with the existing curvilinear walkway southwest of Yulee Hall and tie into existing walks, adding a new connection south of the Dining Center. On the east side of the new curvilinear walkway, enhance the walkway experience and demonstrate sustainable LID practices through the addition of a bioswale that leads to a reconfigured Yulee Pit.

J YULEE PIT

Enhance and reshape Yulee Pit to improve its use for passive recreation, stormwater management, and ecological education. Daylight the headwaters of Jennings Creek to create a naturalized meandering wetland on the east end of the Pit for surface water containment, filtration, and erosion control. Incorporate the extensive addition of native plants, both upland and wetland species, add a shaded seating area beneath the oak canopy, and improve the pedestrian bridge to add to the campus's inventory of enhanced natural areas that accommodate passive recreation.

K JENNINGS CREEK

Enhance access to Jennings Creek, and other incised campus creeks set within a thickly wooded area, through the addition of a walkway system paralleling the wooded banks. Plant the campus side of the walkway with native trees to blur the edge between natural area and the groomed campus landscape. Remove invasives from the natural area in a manner that does not make the slopes to the creek vulnerable, but maintain all native material, whether canopy trees, understory trees, or low undergrowth. Provide additional crossings of the creek to meet the needs of pedestrians and utilize the bridge crossings to provide opportunities for views down to the creek channel. Where space permits, provide overlook areas along the length of the bridge to accommodate longer enjoyment of the natural area.

L UF HEALTH



Create a unified and attractive face for UF Health along Archer Road by employing the highly successful existing planting west of the Newell Drive intersection. At that location, mature oaks are under planted with a simple, low-growing shrub mass to create an elegant edge to UF Health that is appropriate to the speed of the passing vehicles. Extend this approach along the length of UF Health on both sides of Archer Road, interrupting it only at the colorful façade of the Shands Children's Hospital and at the main vehicular drop-off for the Center, where palms and groundcover will allow increased visibility to the recessed entry. Simplify the planting of the island within the drop-off, again featuring palms and ground cover to enhance visibility. Narrow the walkway to the entry allowing the planting of a new row of high canopy deciduous trees adjacent to the walk to replace the hollies currently within the walkway. Construct an accessible sloping walkway to eliminate the complex ramp just west of the main entry. Simplify the entry to Dental Science with a singular walk to the main door. Remove site walls where possible and

consider the removal of some parking near the entry to enhance the entry and the access to the parking area. Add a vehicular gateway at the intersection of Newell Drive with Archer Road. Incorporate additional gateways at the intersection of Gale Lemerand and Archer Road, and as part of the reconstruction of Archer Road, add gateways at its junction with S.W. 13th Street and S.W. 16th Avenue to convey to motorists that they are entering the campus.

M WILMOT GARDENS CONNECTOR

Connect the shared-use path along Lake Alice Creek to the rail-trail along the south side of Archer Road with a new path passing along the east edge of Wilmot Gardens to the new midblock crossing of Archer Road at Garage 9.

N LAKE ALICE

Enhance the experience of visitors to Lake Alice with an improved connection between University (aka Medicinal) Gardens and Ficke Gardens. Widen the existing sidewalks, introducing boardwalk trails where appropriate or necessary and integrate overlooks and seating where views to the lake can be appreciated.

O CULTURAL PLAZA



Employ the open space surrounding the detention ponds along S.W. 34th Street to create a unique setting that announces the Cultural Plaza to the public. Create a sculpture garden around the ponds featuring a signature eye-catching work. Connect the works with a meandering walkway that responds to the contours of the site. Protect the signature trees on the site and further define the site with the careful placement of large deciduous canopy trees to create a comfortable walking experience. Enhance the foreground of the space with the planting of high-branching street trees to frame the views into the site from S.W. 34th Street and relocate the fence to be in relation to the street.

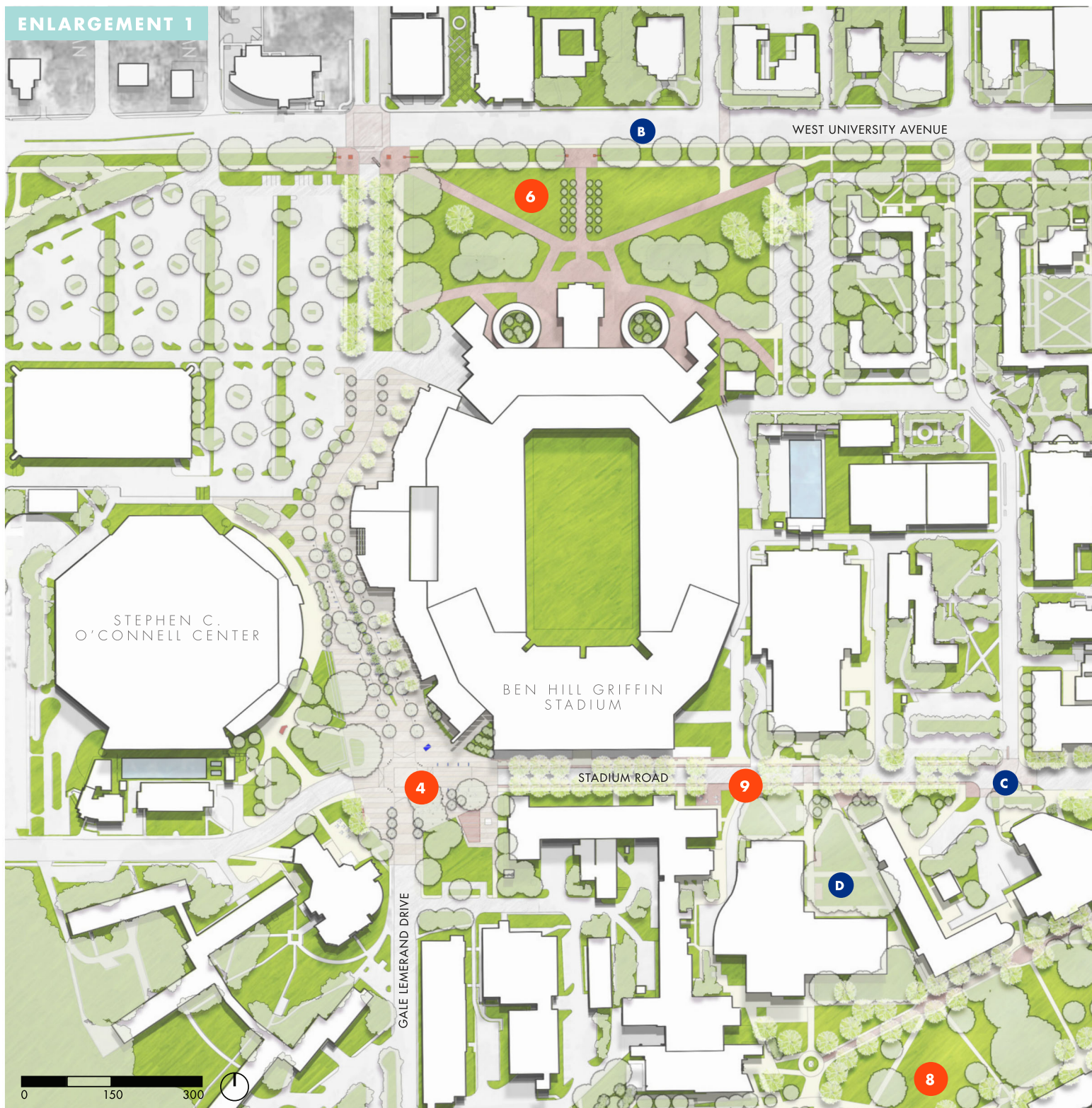
Enhance the approach to the Cultural Plaza along Hull Road with the planting of flowering trees and large informal shrub masses, where possible, given the existing utilities. Extend the informal planting of shrub masses and small trees to help filter the views into the service area and the parking area north of the Harn Museum. Integrate the shrub masses and small trees with a planting scheme for the boulder walkway, and consider the addition of wall art to the

north façade of the Harn Museum. Complete the gap in the existing shared-use path along the south side of Hull Road from SW 34th Street to the bus shelter and crosswalk leading to the SW Recreation Center.

With the construction of the proposed parking garage, enhance the entrance to the Cultural Plaza by the removal of parking flanking Hull Road and Bledsoe Drive to create a minimum 30' green buffer between roadway and parking. Utilize the space to comfortably accommodate a pedestrian walkway, a double row of trees, and low shrub masses to filter the views of the parking so that the entry experience is focused on the architecture and landscaped setting of the Plaza.

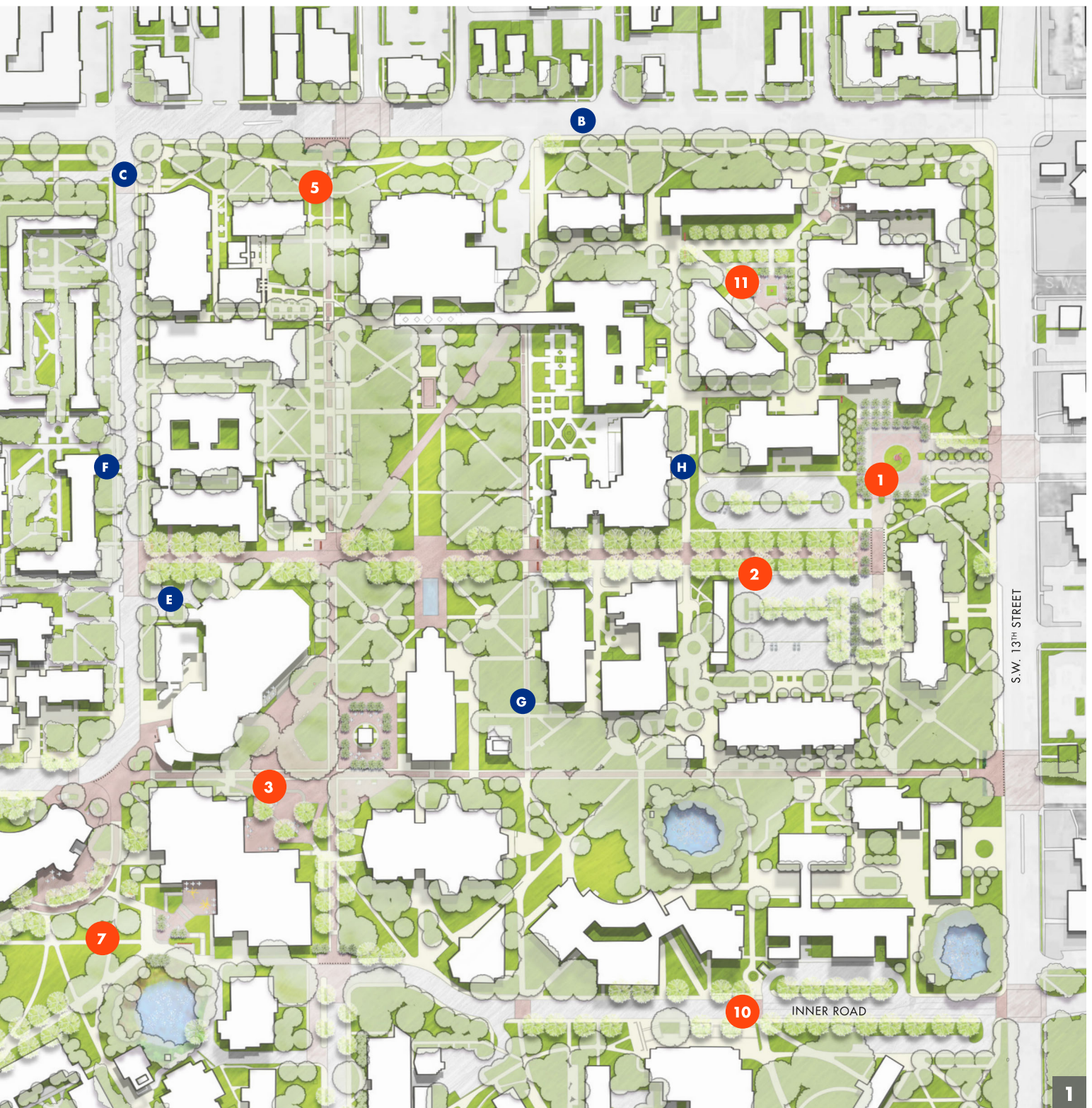
P HEALTH AFFAIRS CIVIC SQUARE

Create a significant gathering space at the east side of the health sciences district and the south end of Newell Drive as one of the five civic squares proposed by the 2016 Strategic Development Plan. Celebrate the arrival at UF Health from the campus core to the north and along the proposed EW research corridor linking the medical complex to the Downtown. Anchor both of these connections with an exterior space at the heart of the medical complex that reflects the preeminence of UF Health. Greet the Gainesville community with a space that welcomes them to the medical complex as well as the UF campus beyond.



PRIORITY PROJECTS

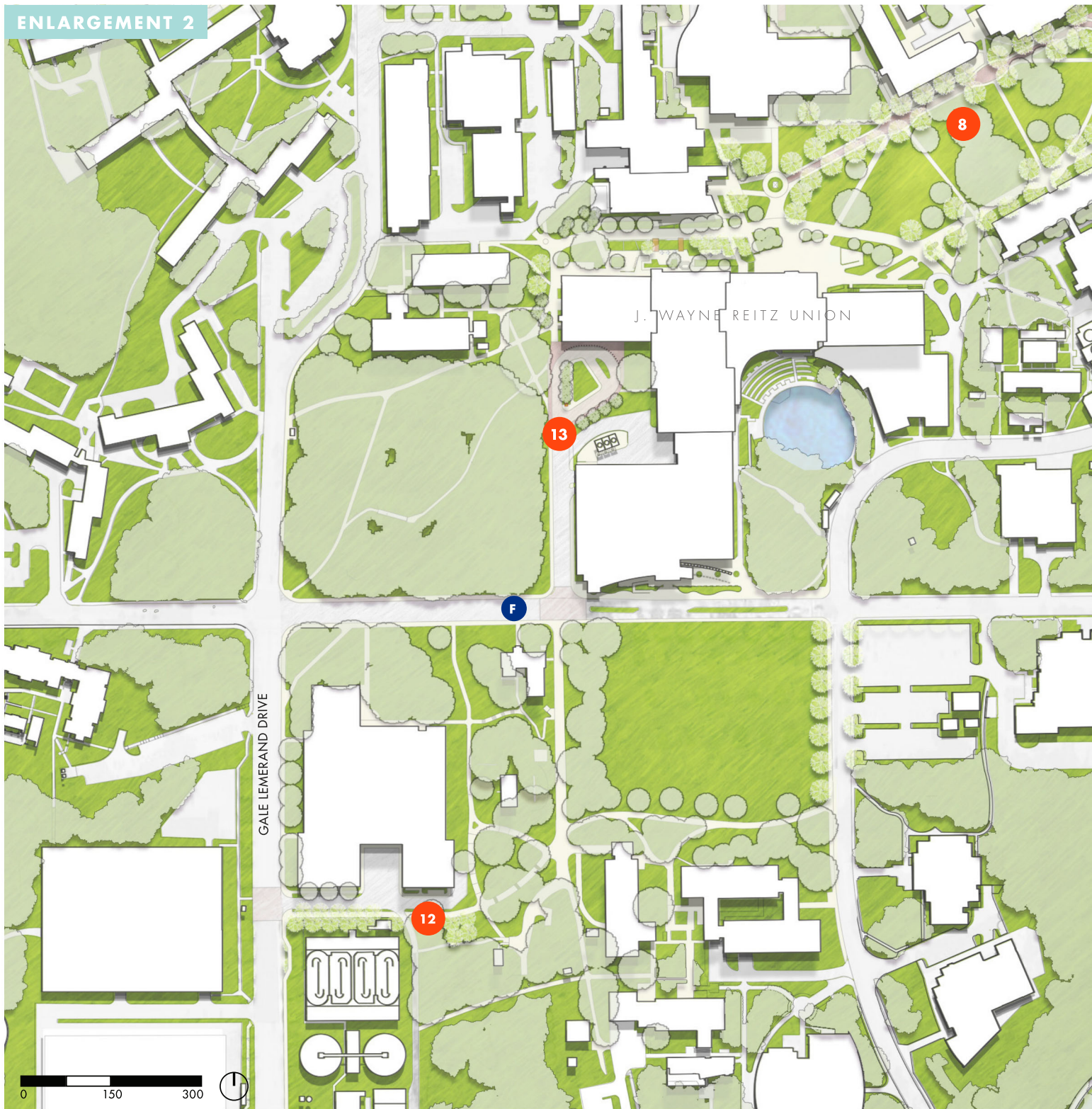
- | | | | |
|------------------------|----------------------------|-------------------------------|--------------------------------|
| 1 TIGERT COURT | 5 NEWELL GATEWAY | 9 STADIUM ROAD | 13 REITZ UNION ENTRY/ DROP-OFF |
| 2 UNION WALK | 6 STADIUM LAWN | 10 INNER ROAD | |
| 3 TOWER PLAZA | 7 REITZ UNION LAWN - EAST | 11 EMERSON COURTYARD | |
| 4 GATOR (CORNER) PLAZA | 8 REITZ UNION LAWN - NORTH | 12 SHARED-USE PATH AT PHYSICS | |



CAMPUS AREAS FOR ENHANCEMENT

- | | | | |
|---------------------------------|---------------------------------------|-------------------------------|--------------------------------------|
| A PRESIDENT PARK | E TURLINGTON HALL SERVICE AREA | I WALKWAY TO YULEE PIT | M WILMOT GARDENS CONNECTOR |
| B WEST UNIVERSITY AVENUE | F ARTS AXIS | J YULEE PIT | N LAKE ALICE |
| C BUCKMAN DRIVE | G GRINTER HALL WALKWAY | K JENNINGS CREEK | O CULTURAL PLAZA |
| D WEIMER HALL | H CRISER HALL WALKWAY | L UF HEALTH | P HEALTH AFFAIRS CIVIC SQUARE |

ENLARGEMENT 2



PRIORITY PROJECTS

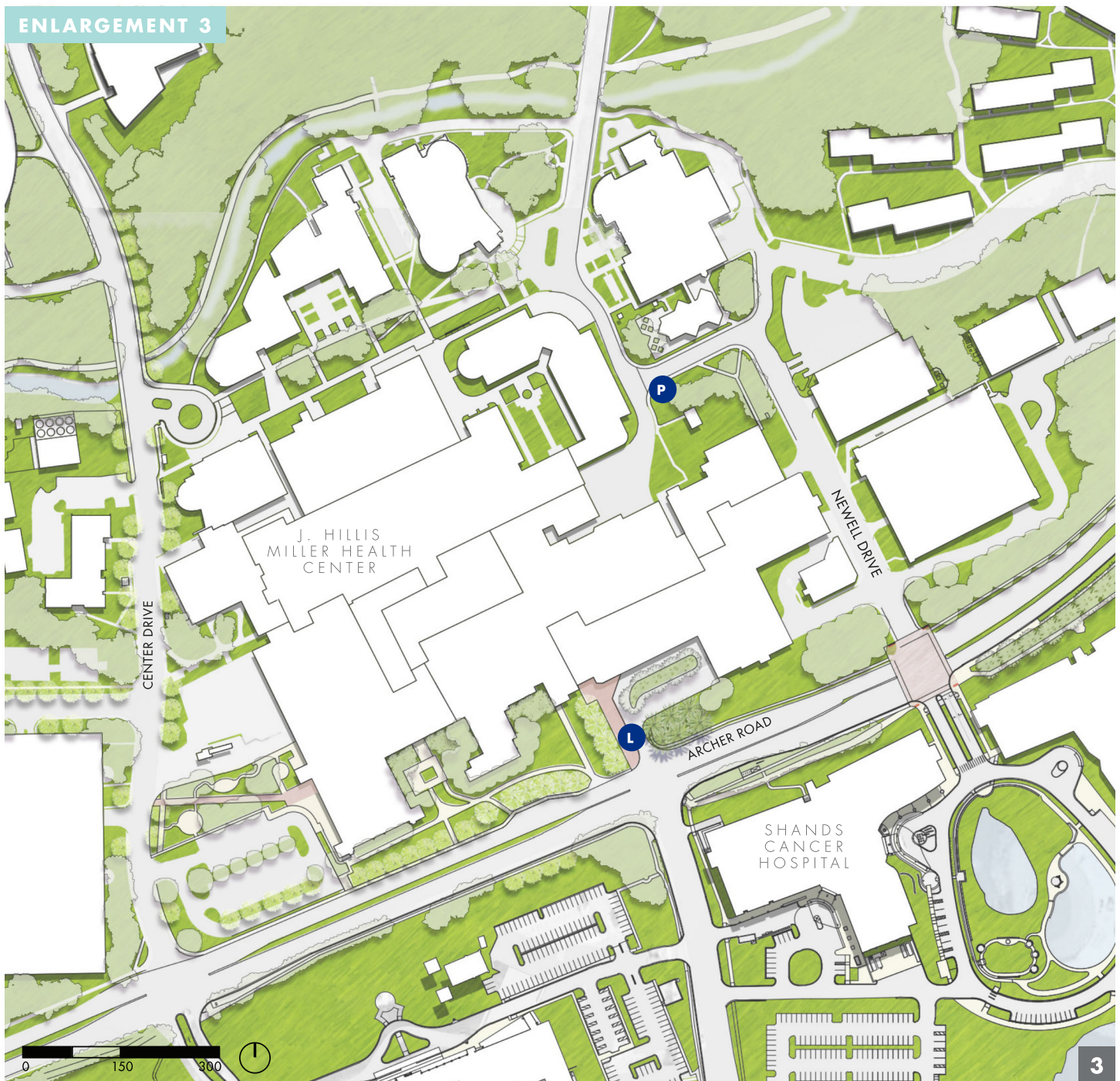
- | | | | |
|------------------------|----------------------------|-------------------------------|--------------------------------|
| 1 TIGERT COURT | 5 NEWELL GATEWAY | 9 STADIUM ROAD | 13 REITZ UNION ENTRY/ DROP-OFF |
| 2 UNION WALK | 6 STADIUM LAWN | 10 INNER ROAD | |
| 3 TOWER PLAZA | 7 REITZ UNION LAWN - EAST | 11 EMERSON COURTYARD | |
| 4 GATOR (CORNER) PLAZA | 8 REITZ UNION LAWN - NORTH | 12 SHARED-USE PATH AT PHYSICS | |



CAMPUS AREAS FOR ENHANCEMENT

- | | | | |
|---------------------------------|---------------------------------------|-------------------------------|-------------------------------------|
| A PRESIDENT PARK | E TURLINGTON HALL SERVICE AREA | I WALKWAY TO YULEE PIT | M WILMOT GARDENS CONNECTOR |
| B WEST UNIVERSITY AVENUE | F ARTS AXIS | J YULEE PIT | N LAKE ALICE |
| C BUCKMAN DRIVE GATEWAYS | G GRINTER HALL WALKWAY | K JENNINGS CREEK | O CULTURAL PLAZA |
| D WEIMER HALL | H CRISER HALL WALKWAY | L UF HEALTH | P HEALTH AFFAIR CIVIC SQUARE |

ENLARGEMENT 3



PRIORITY PROJECTS

- | | | | |
|------------------------|----------------------------|-------------------------------|--------------------------------|
| 1 TIGERT COURT | 5 NEWELL GATEWAY | 9 STADIUM ROAD | 13 REITZ UNION ENTRY/ DROP-OFF |
| 2 UNION WALK | 6 STADIUM LAWN | 10 INNER ROAD | |
| 3 TOWER PLAZA | 7 REITZ UNION LAWN - EAST | 11 EMERSON COURTYARD | |
| 4 GATOR (CORNER) PLAZA | 8 REITZ UNION LAWN - NORTH | 12 SHARED-USE PATH AT PHYSICS | |



CAMPUS AREAS FOR ENHANCEMENT

- | | | | |
|---------------------------------|---------------------------------------|-------------------------------|--------------------------------------|
| A PRESIDENT PARK | E TURLINGTON HALL SERVICE AREA | I WALKWAY TO YULEE PIT | M WILMOT GARDENS CONNECTOR |
| B WEST UNIVERSITY AVENUE | F ARTS AXIS | J YULEE PIT | N LAKE ALICE |
| C BUCKMAN DRIVE GATEWAYS | G GRINTER HALL WALKWAY | K JENNINGS CREEK | O CULTURAL PLAZA |
| D WEIMER HALL | H CRISER HALL WALKWAY | L UF HEALTH | P HEALTH AFFAIRS CIVIC SQUARE |

