

UF-642

SW Campus Transportation Improvements

Design Development Approval

LUFPC Committee Presentation

March 3, 2020

Stuart Cullen, Sr. Project Manager

UF Planning Design & Construction

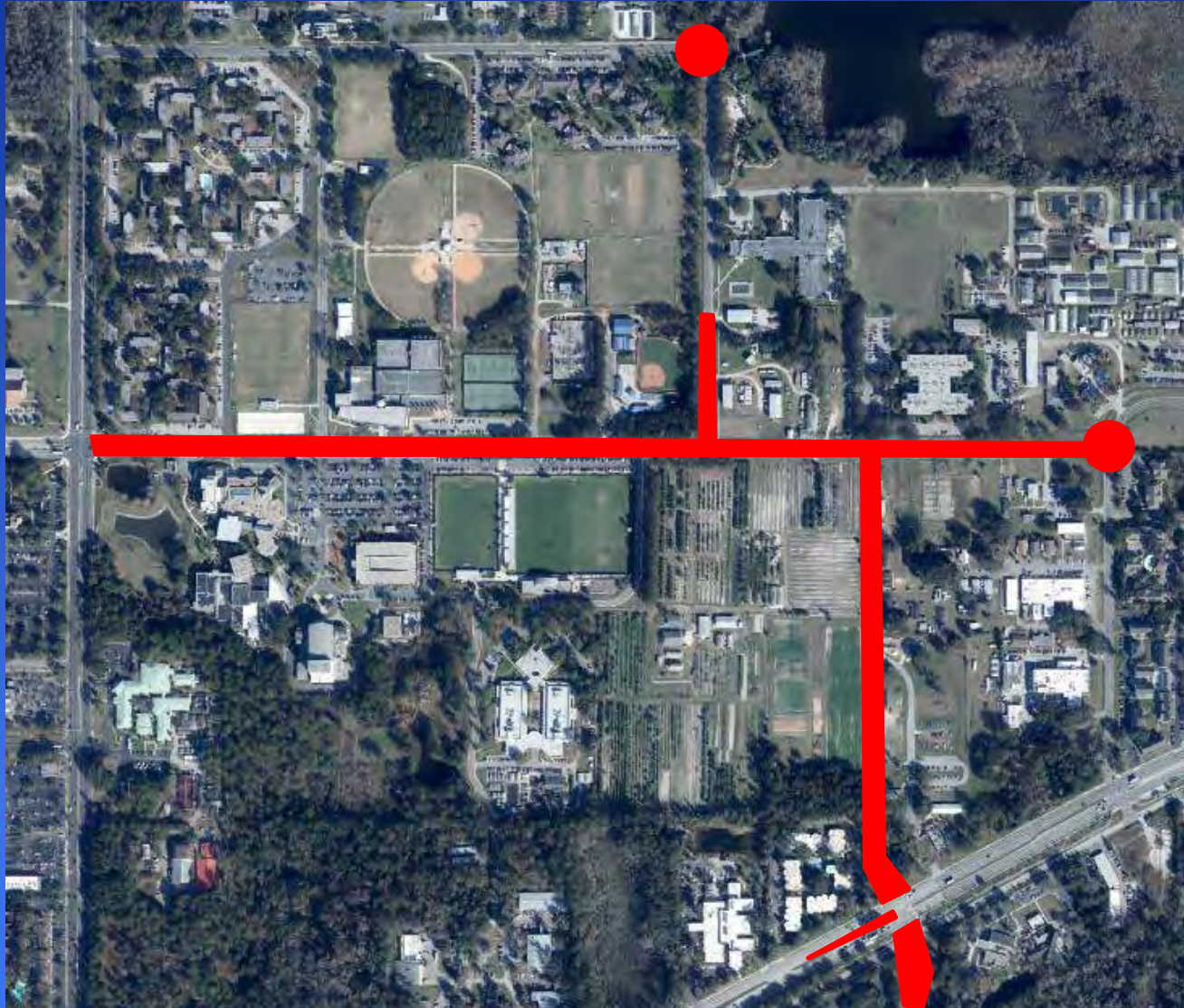
Jay Brown, PE

JBrown Professional Group

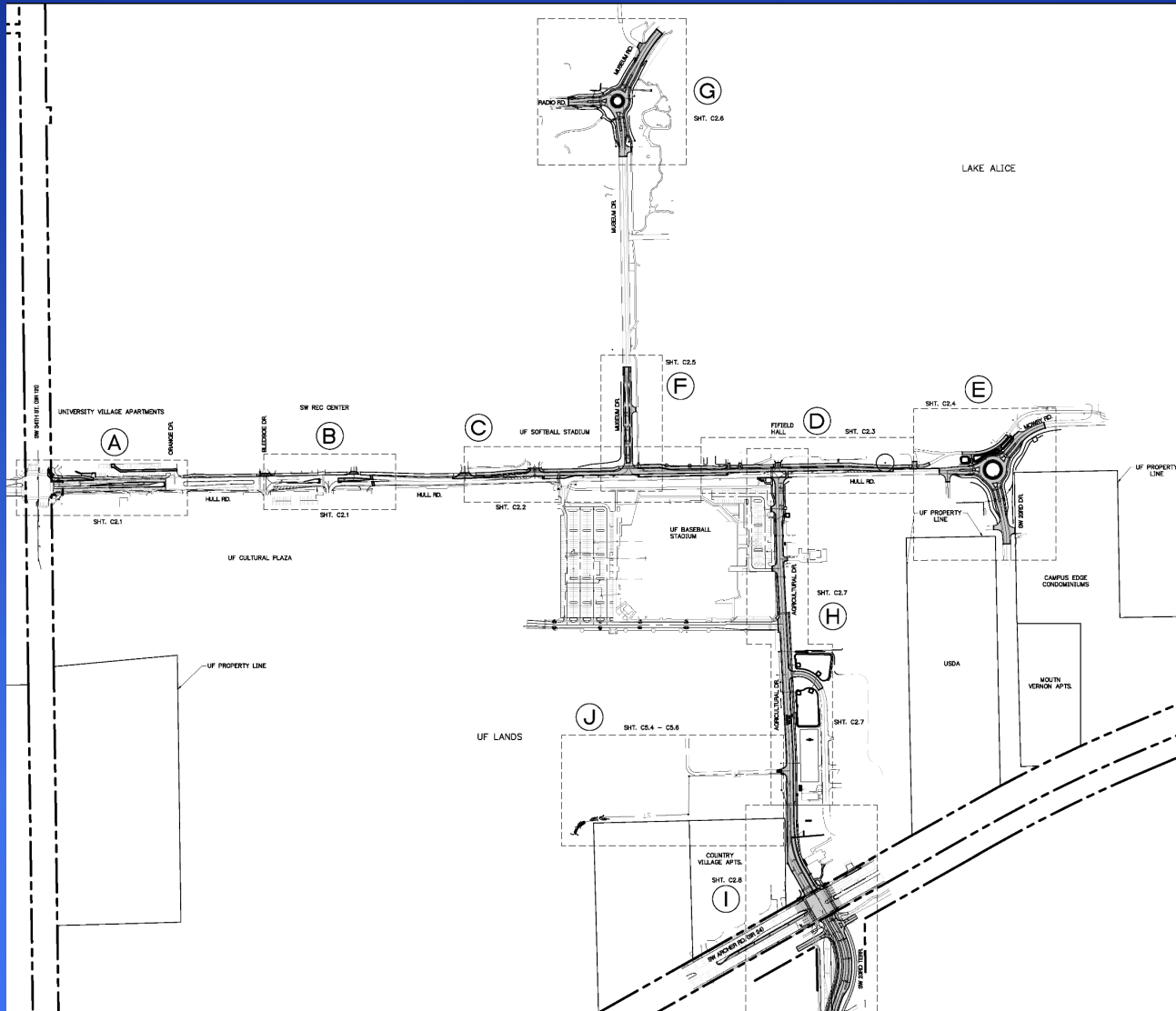
SW Campus Transportation Improvements

- Location
- Background
- Other Committees
- Status & Schedule

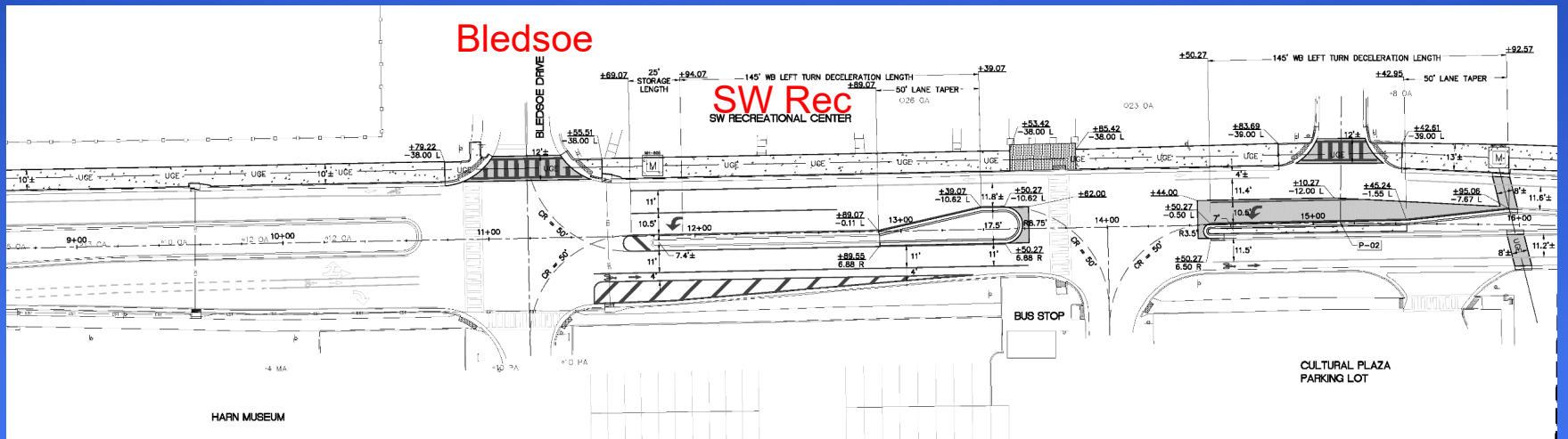
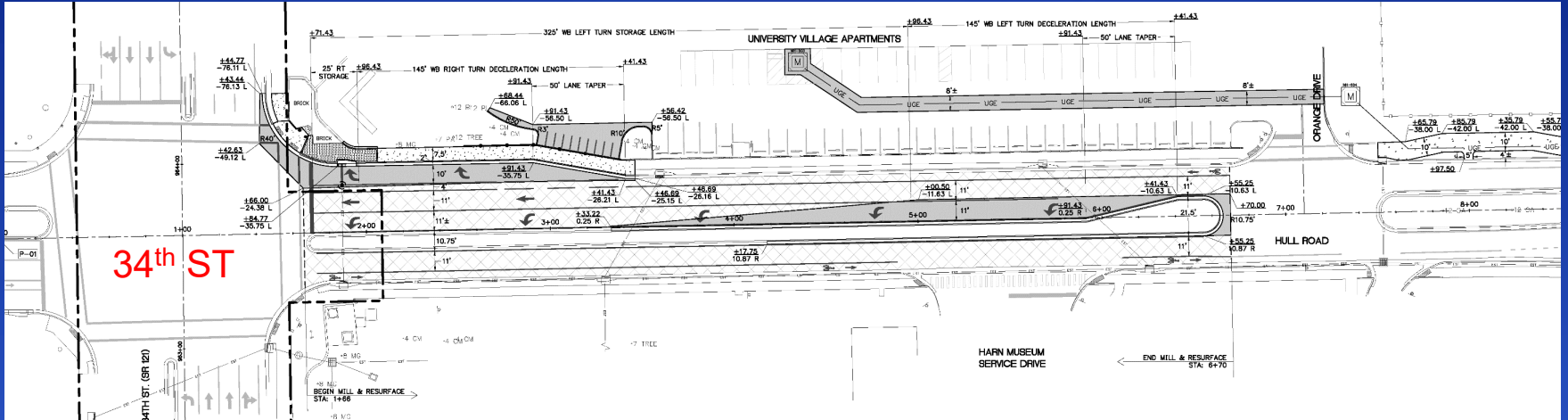
SW Campus Transportation Improvements



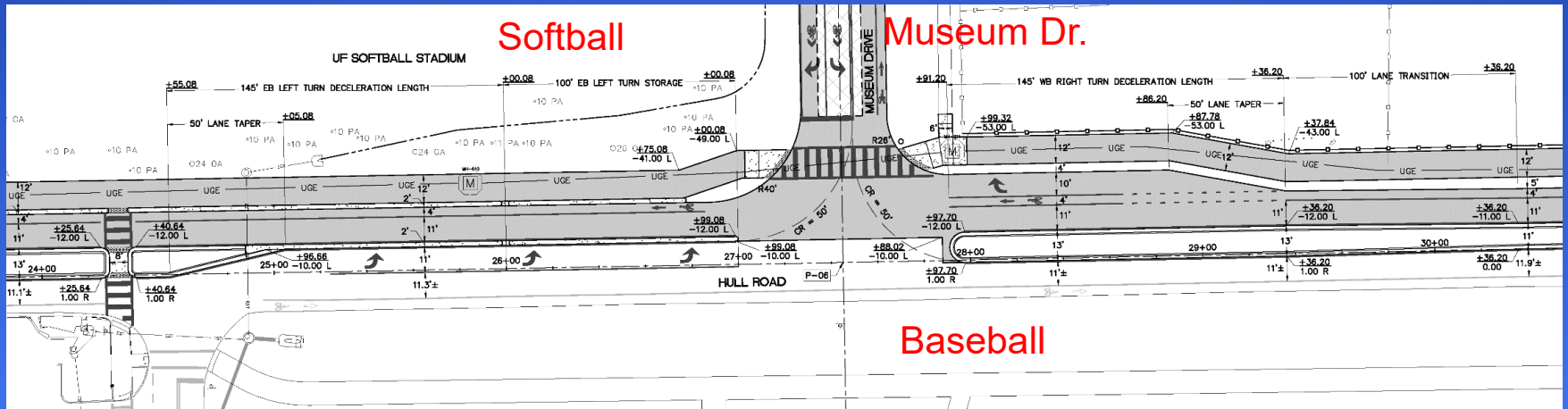
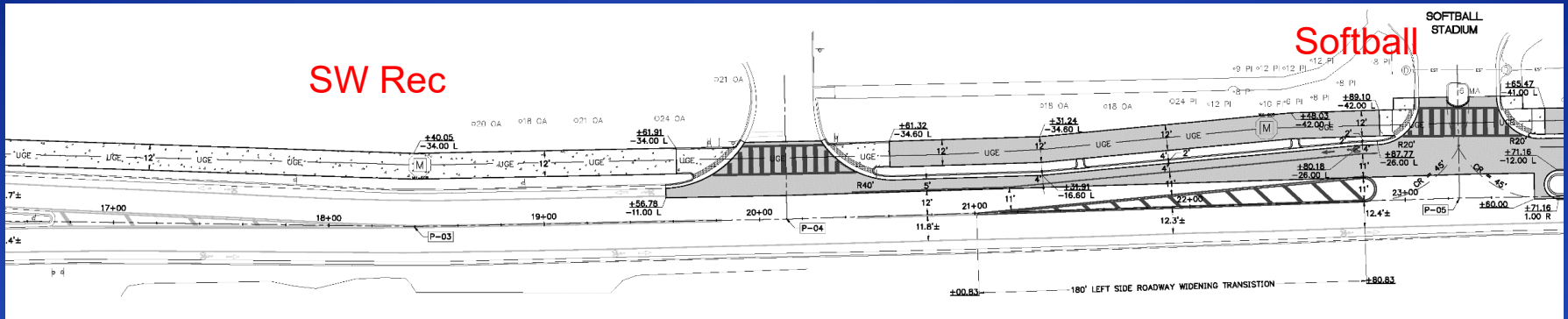
SW Campus Transportation Improvements



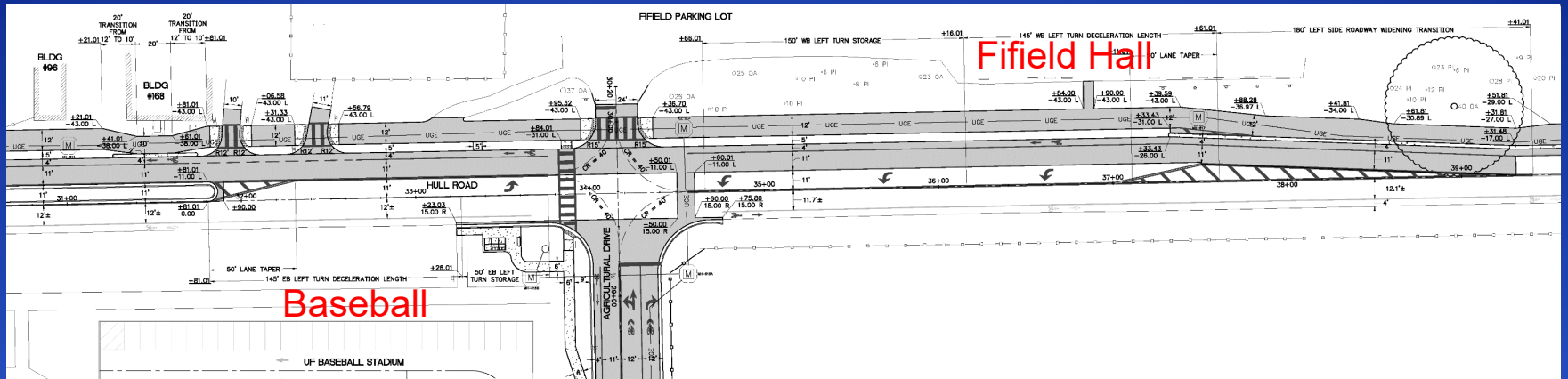
SW Campus Transportation Improvements



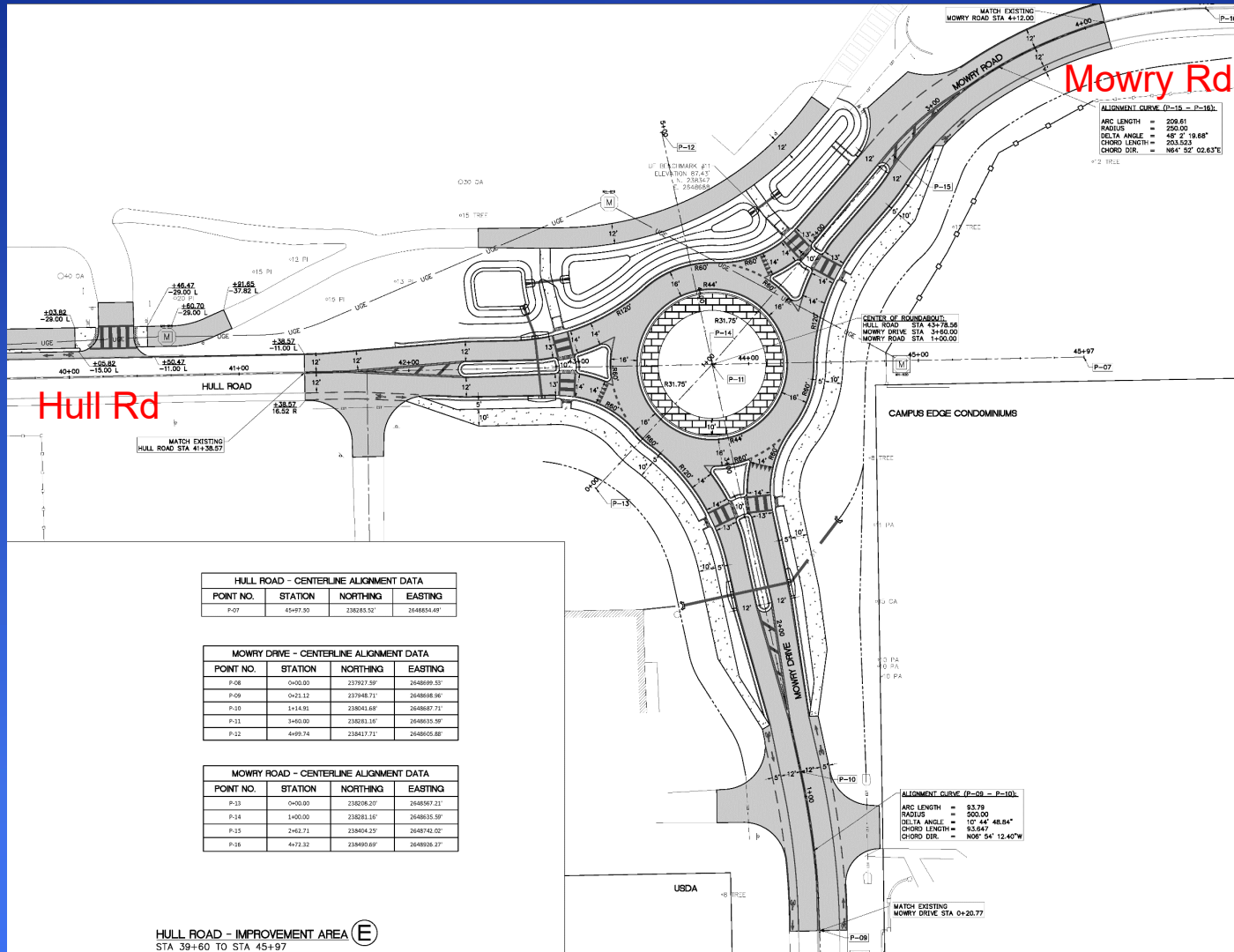
SW Campus Transportation Improvements



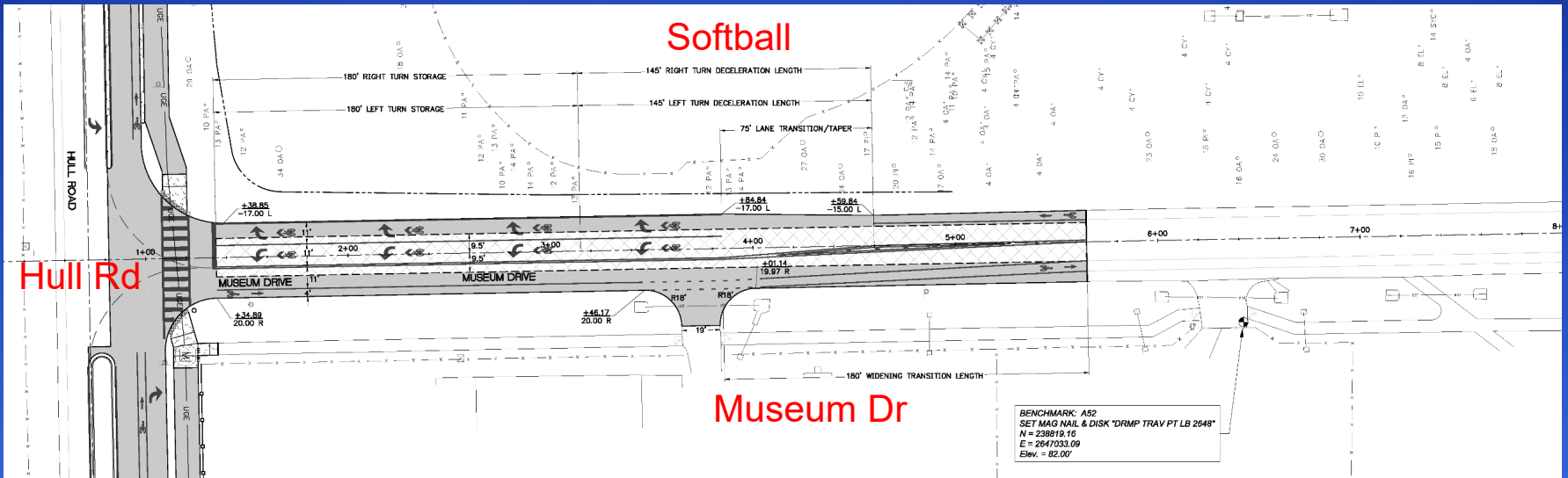
SW Campus Transportation Improvements



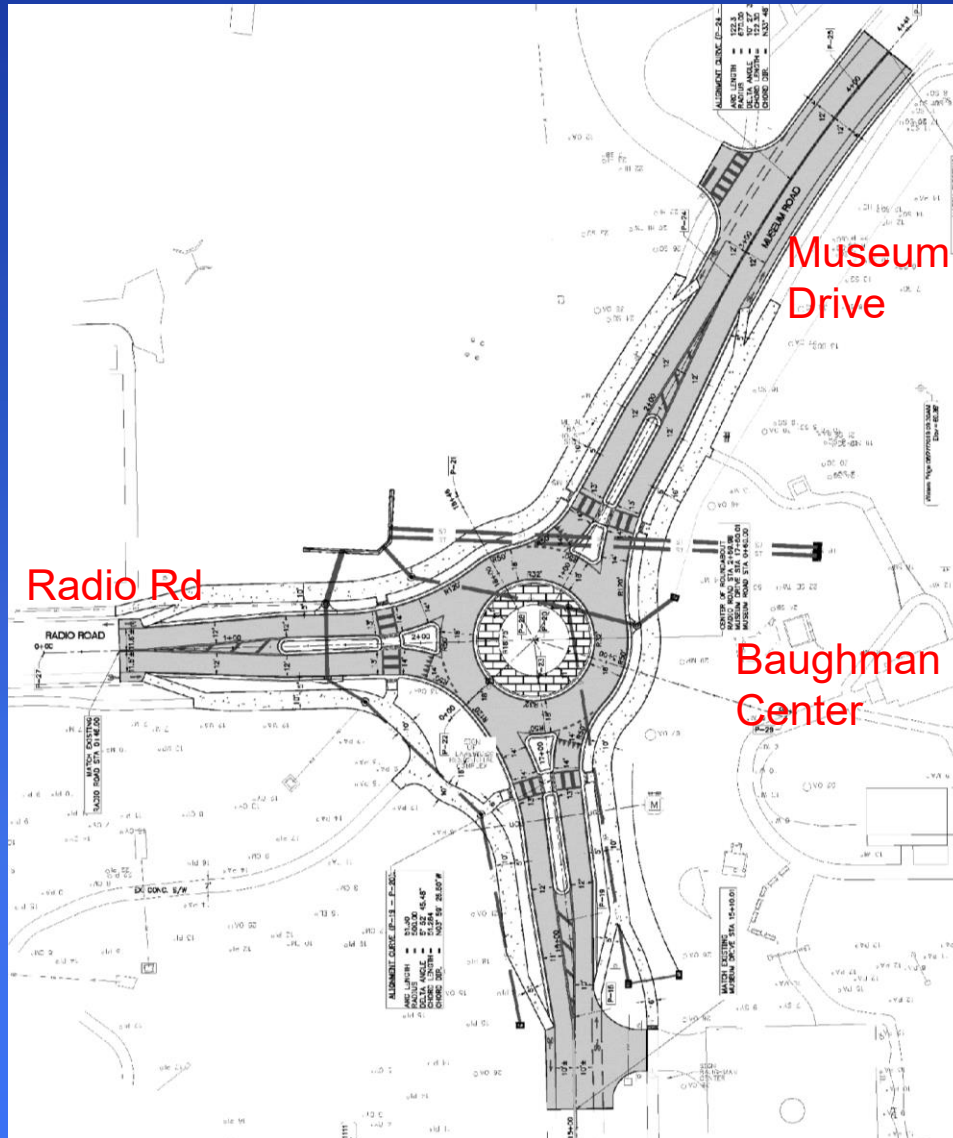
SW Campus Transportation Improvements



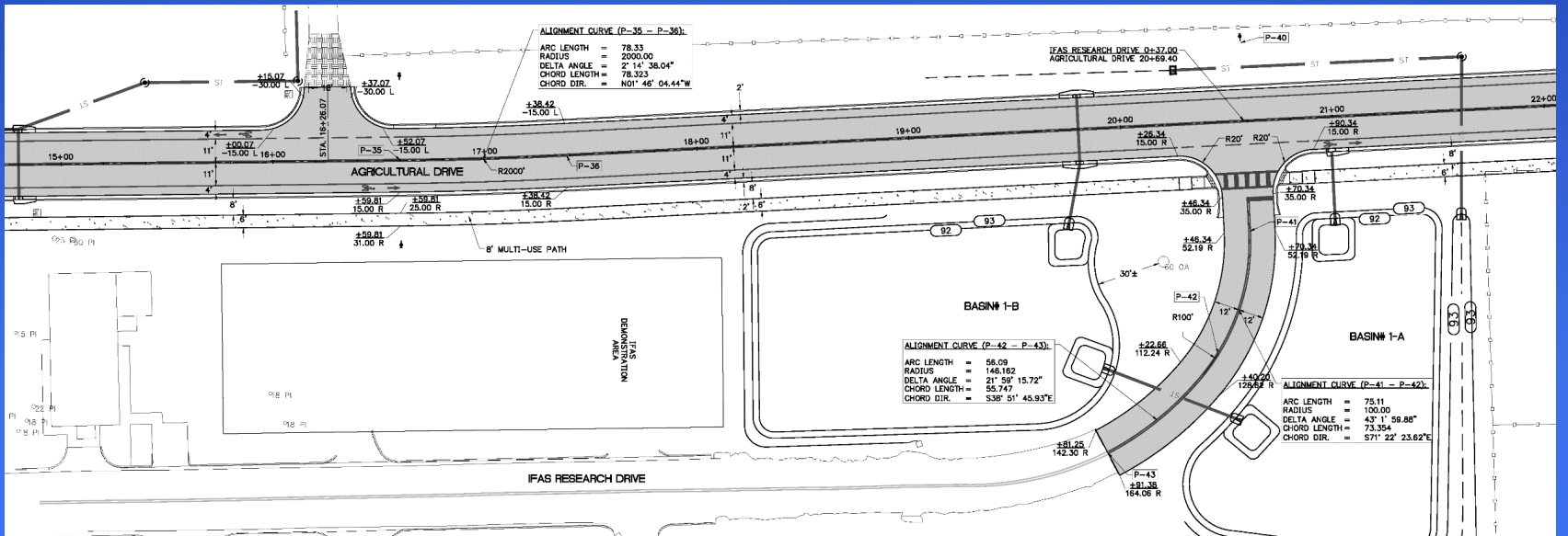
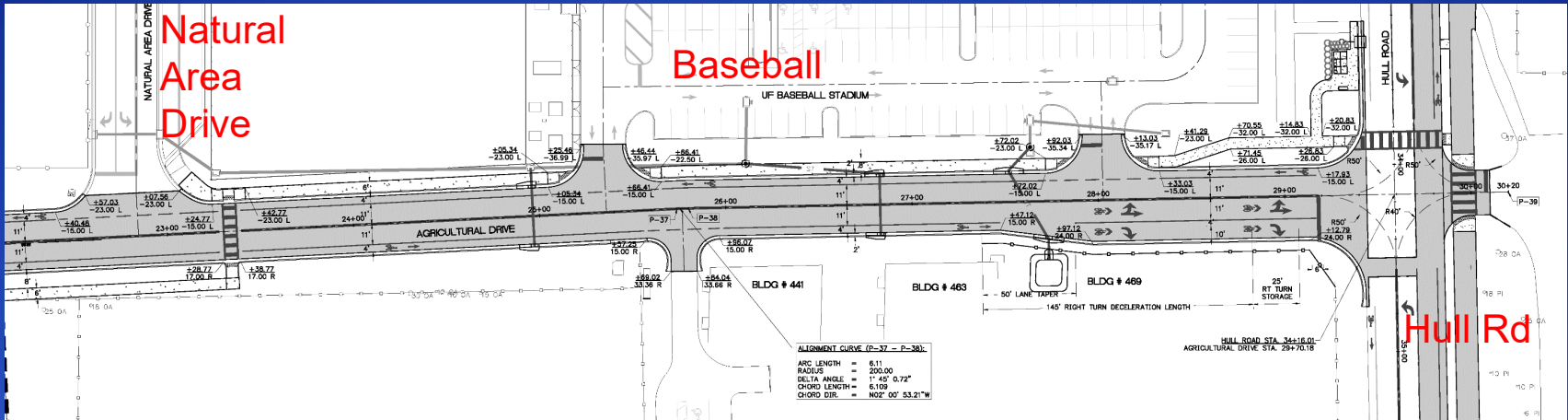
SW Campus Transportation Improvements



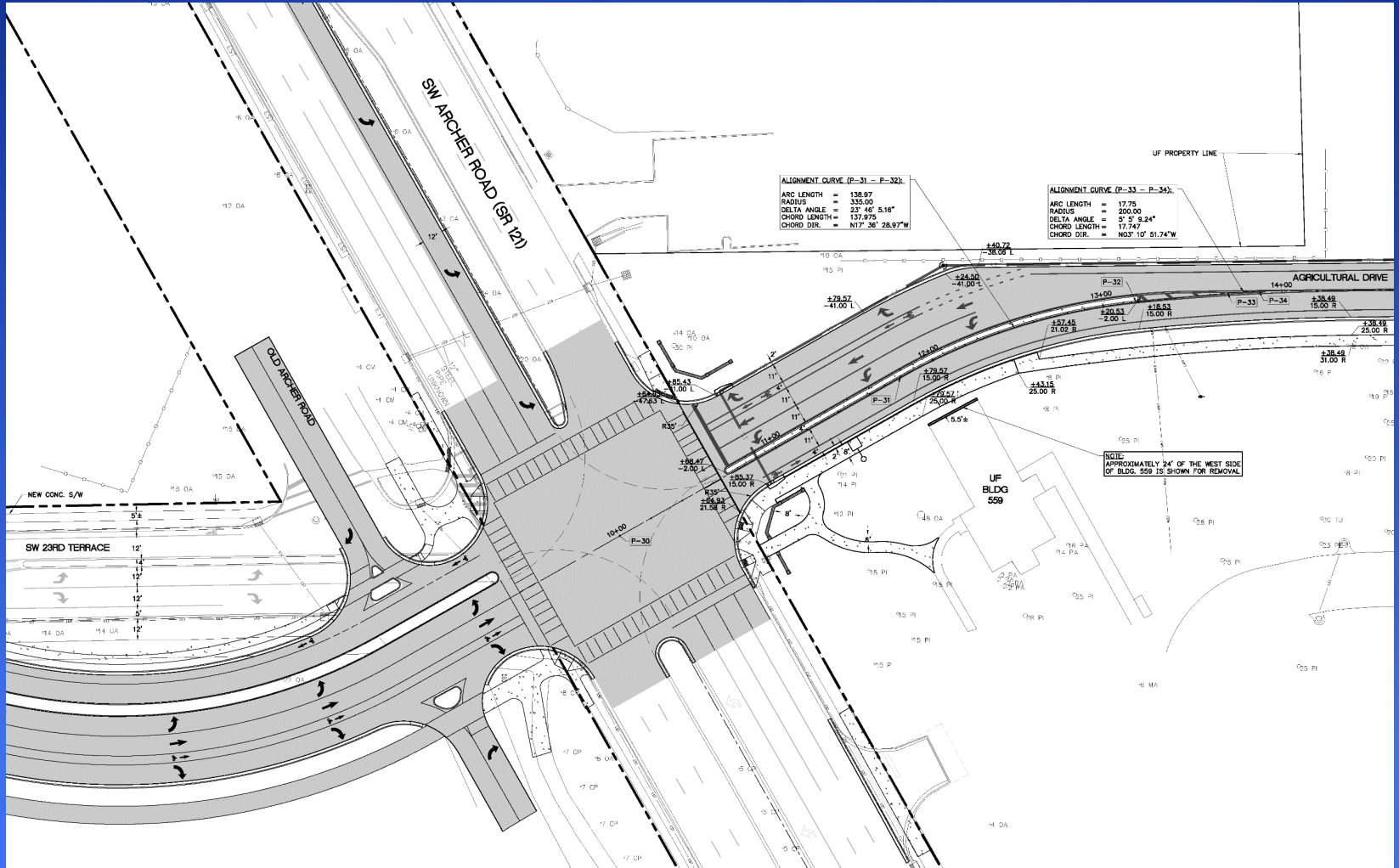
SW Campus Transportation Improvements



SW Campus Transportation Improvements



SW Campus Transportation Improvements



SW Campus Transportation Improvements



SW Campus Transportation Improvements

Other Committees

- PATAC
 - Approved February 11, 2020
 - DD & Draft 60%CD Presented
 - No Comments
- LVL
 - Approved February 13, 2020
 - DD & Draft 60%CD Presented
 - Tree Removals (only 1 Heritage) Approved
 - Proposed Tree Planting/Mitigation Approved
 - Requested Design Team review Hull/34th Area

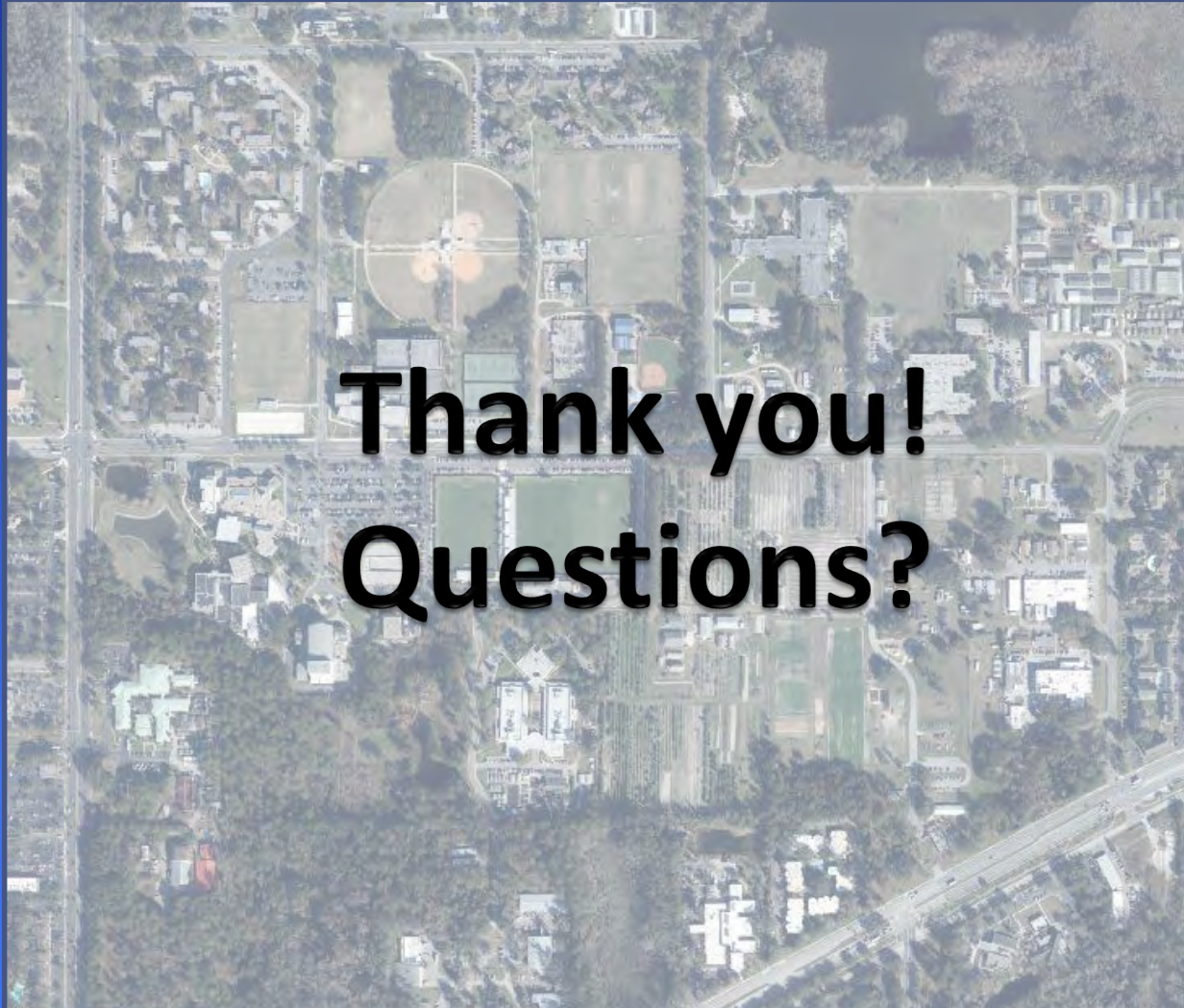
SW Campus Transportation Improvements

Schedule

- Design
 - ASD – 10/2019
 - DD – 12/2019
 - CD – 4/2020
- Construction
 - Start – 7/2020
 - Finish – 2/2021



SW Campus Transportation Improvements



Thank you!
Questions?

UF-632

Data Science and Information
Technology Building

ASD Phase

Land Use and Facilities Planning
Committee [LUFPC]

March 3, 2020

Planning, Design & Construction: Jim Vignola, PM
Architect: BCJ - Bohlin Cywinski Jackson
Civil Engineering Consultant: CHW

UF-632

Data Science and Information Technology Building

- Background / Scope / Location
- Parking Impacts
- Tree Impacts
- Current Status
- Committee Approval/Recommendation

UF-632

Data Science and Information Technology Building

- Background:
 - Previously Presented at PROGRAM Phase in MAY 2018
- Scope:
 - 7 Stories + Mech Penthouse
 - +/-265,000 GSF
 - 4 User Groups (HWCOE, COM, COP, Informatics Institute)

- Location

- Boundaries:

- MUSEUM ROAD / SWEETWATER / ENGINEERING / CENTER DRIVE



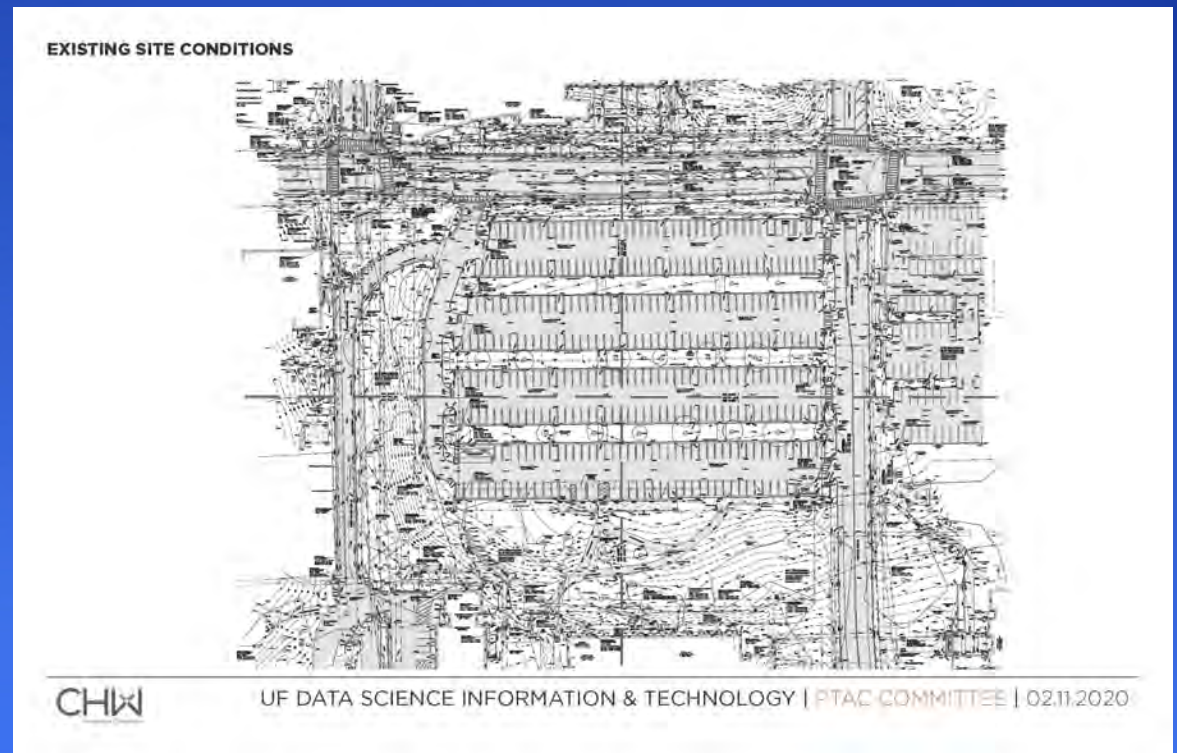
UF-632

Data Science and Information Technology Building

- Parking Impacts
 - Approved with comments at Feb 11, 2020 PATAC Meeting

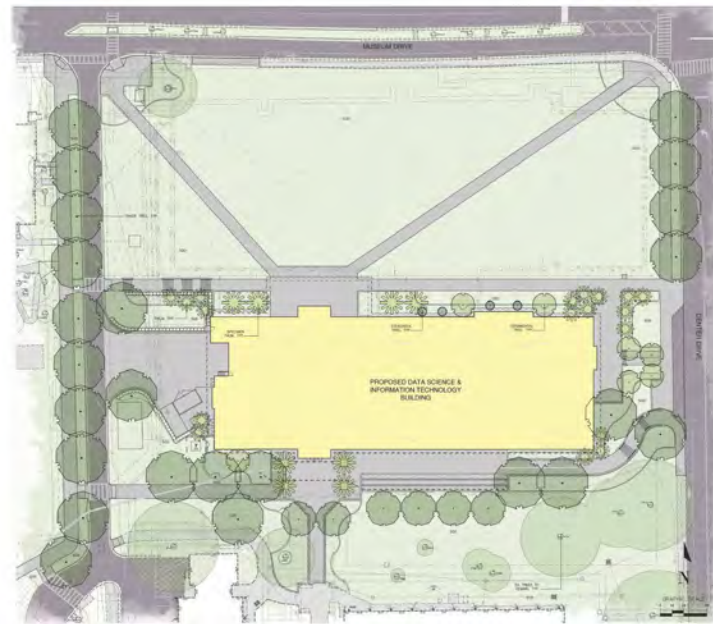
EXISTING SITE CONDITIONS

- SITE PARKING COUNT
 - REMOVING +/-350
 - DISPLACED TO New GARAGE XIV (1,400 spaces)
 - Program to add up to 10 nearby
 - (MAE-A Service Drive, DSIT Loading Dock, other)
- GRADE CHANGE



OVERVIEW

- INFRASTRUCTURE PROJECT/TIMING
- REDO OF SWEETWATER / STUDY /TRAFFIC-LIGHT
 - DIFFERENT, BUT COINCIDING PROJECT
 - CONCEPT PLANS STUDIED: SERVICE ACCESS, DROP-OFF FOR SOME MEDICAL PROGRAM
 - STUDY / TRAFFIC SIGNALING
 - PEDESTIAN WAY. SERVICE VEHICLES ONLY



OVERVIEW

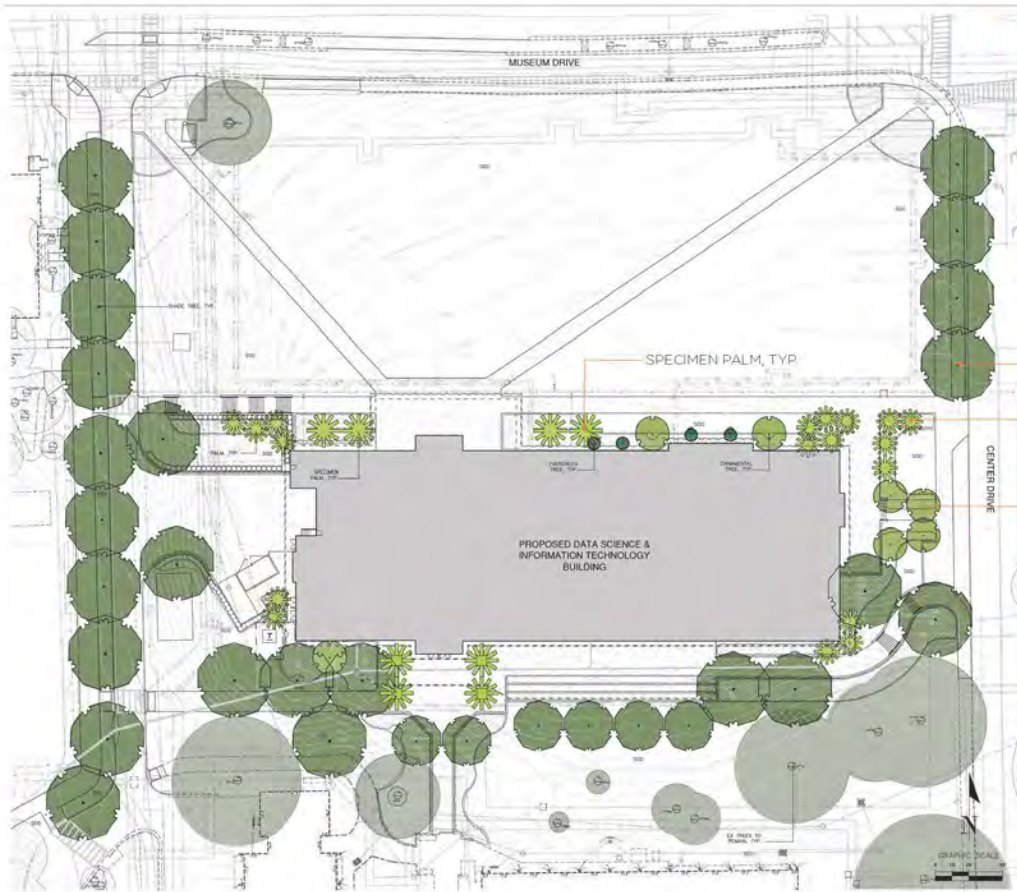
- INFRASTRUCTURE PROJECT/TIMING
- REDO OF ROAD/STUDY/TRAFFIC LIGHT (DIFFERENT, BUT COINCIDING PROJECT)
- SITE PARKING COUNT (REMOVING/ ADD/ DISPLACED TO GARAGES)
- ENTRY LOCATIONS
- OTHER



UF-632

Data Science and Information Technology Building

- Tree Impacts
 - Approved with comments at Feb 13, 2020 LVLC Meeting



| TYPE | SUGGESTED SPECIES | SIZE |
|-----------------|--|---------------|
| CANOPY TREES | LIVE OAK*, MAGNOLIA*, WINGED ELM*, TULIP POPLAR* | 100 GALLON |
| ORNAMENTAL TREE | GRAPE MYRTLE*, RIVER BIRCH* | 100 GALLON |
| EVERGREEN TREE | WELLIE STEVEN'S HOLLY* | 65 GALLON |
| SPECIMEN PALM | WILD DATE PALM, MULE PALM, SABAL CAUSIARUM | VARIES |
| PALM | CABBAGE PALM*, NITIDA PALM | 16"CT - 22"CT |

* CONSISTENT WITH UF LANDSCAPE MASTER PLAN PLANT LIST

TREE MITIGATION TOTALS:

REGULATED TREES TO REMOVE:
(56) TOTAL TREES

TOTAL TREES REQUIRED FOR 2:1 MITIGATION:
(112) TOTAL TREES

HERITAGE TREES TO REMOVE:

22" SVC = 3 TREES
 22" SVC = 3 TREES
 26" SVC = 5 TREES
 27" SVC = 6 TREES

TOTAL TREES REQUIRED FOR HERITAGE TREE MITIGATION:
(17) TREES OR \$4,250 REQUIRED FOR REQUIRED MITIGATION

TOTAL TREES REQUIRED MITIGATION:
(129) TREES

TOTAL TREES PROVIDED:
(41) TREES

TOTAL MITIGATION DEFICIT:
(88) TREES X \$250 PER TREE = \$22,000

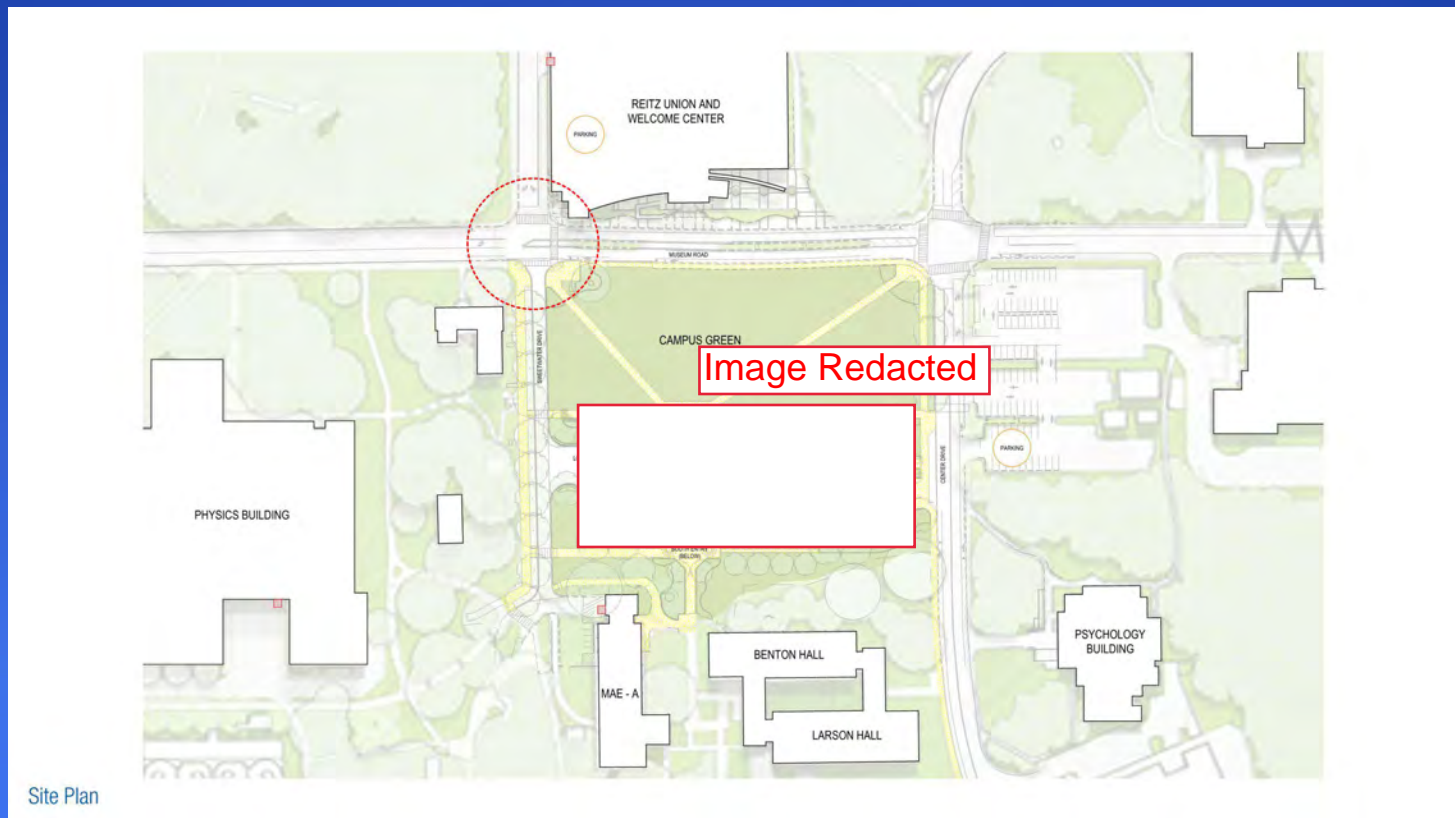
UF-632

Data Science and Information Technology Building

- Current Status
 - ASD – Advanced Schematics
 - Design approvals by User-Groups, Donor and BOT
 - +/- 3 months to DD
 - Late Fall/Winter Break Ground (ERP – Sitework)

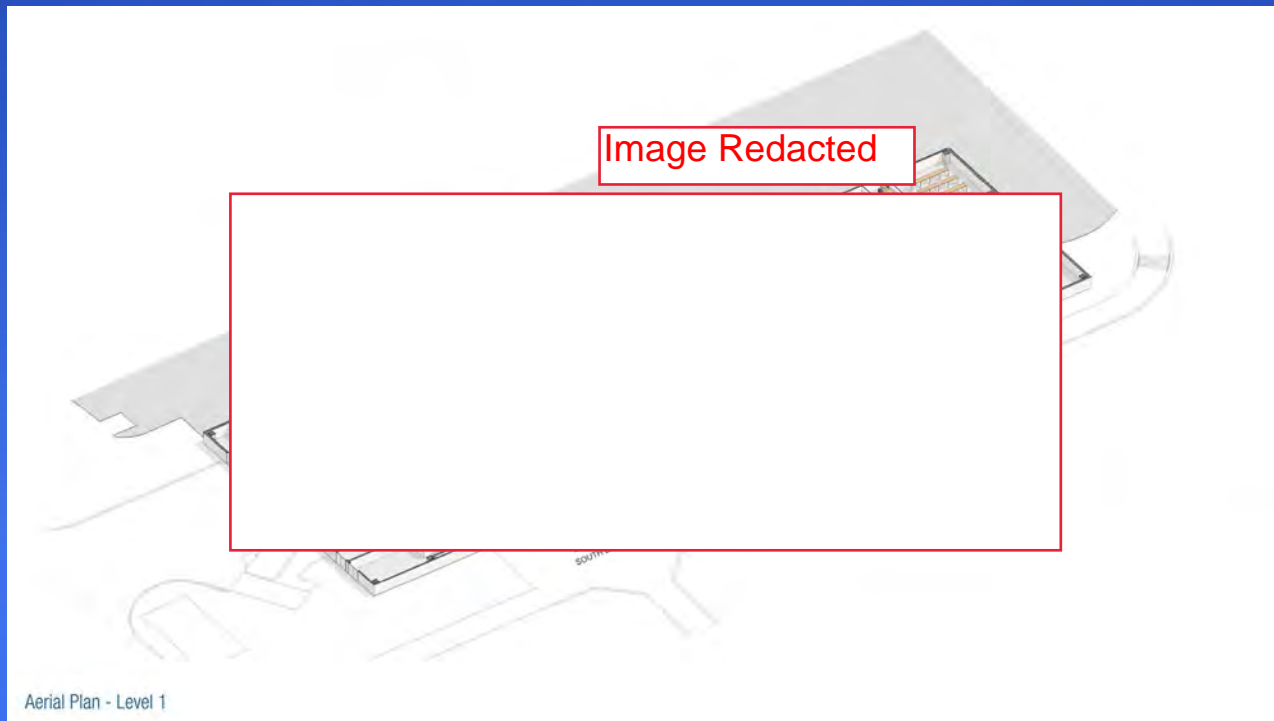
UF-632

Data Science and Information Technology Building



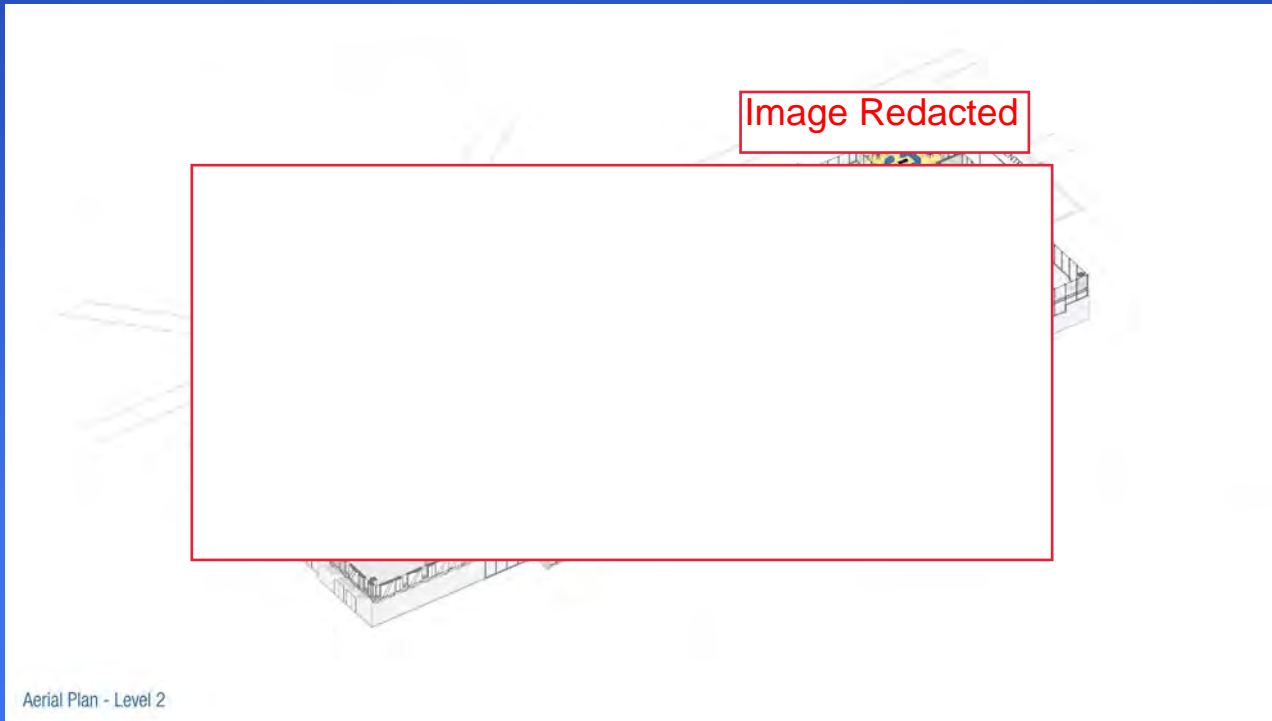
UF-632

Data Science and Information Technology Building



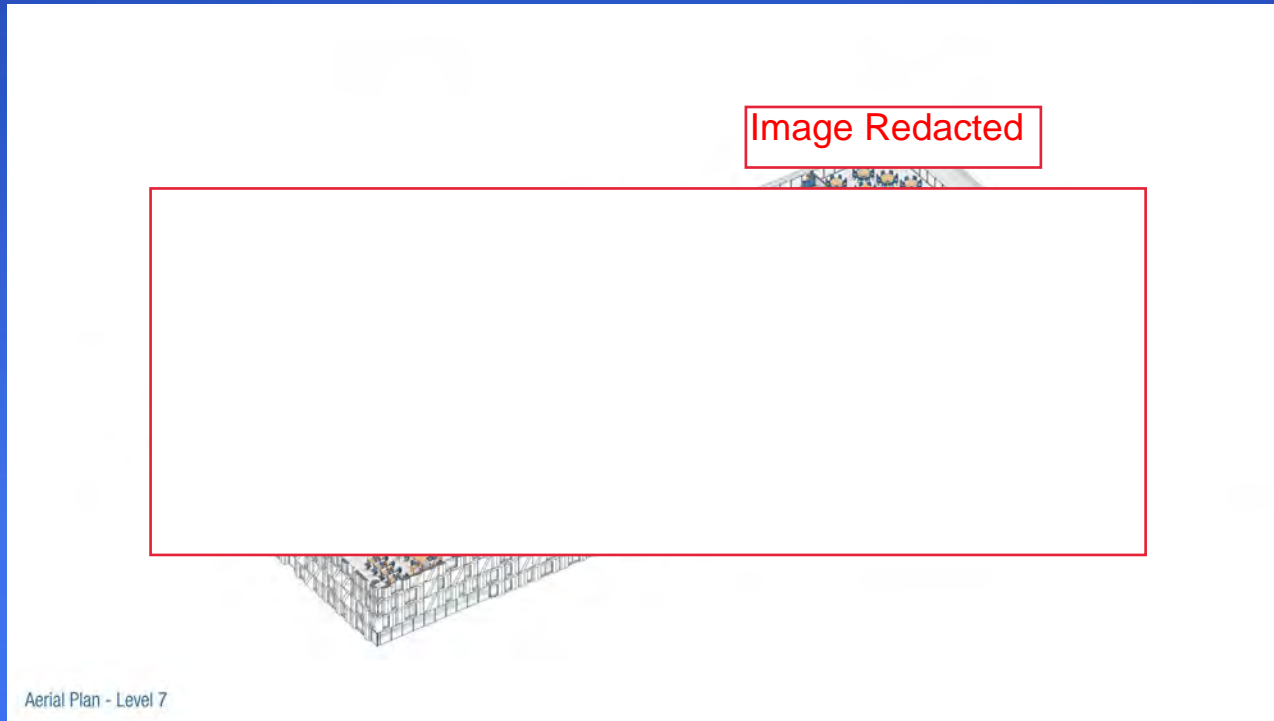
UF-632

Data Science and Information Technology Building



UF-632

Data Science and Information Technology Building



UF-632

Data Science and Information Technology Building



Schematic Massing - Perspective from Center Drive looking North

UF-632

Data Science and Information Technology Building



Schematic Massing - Perspective from Museum Road + Center Drive looking Southwest

UF-632

Data Science and Information Technology Building



Schematic Massing - Perspective from Museum Road looking South

UF-632

Data Science and Information Technology Building

- Animation

- [UF DSIT 100ASD Animation.mp4](#)

UF-632

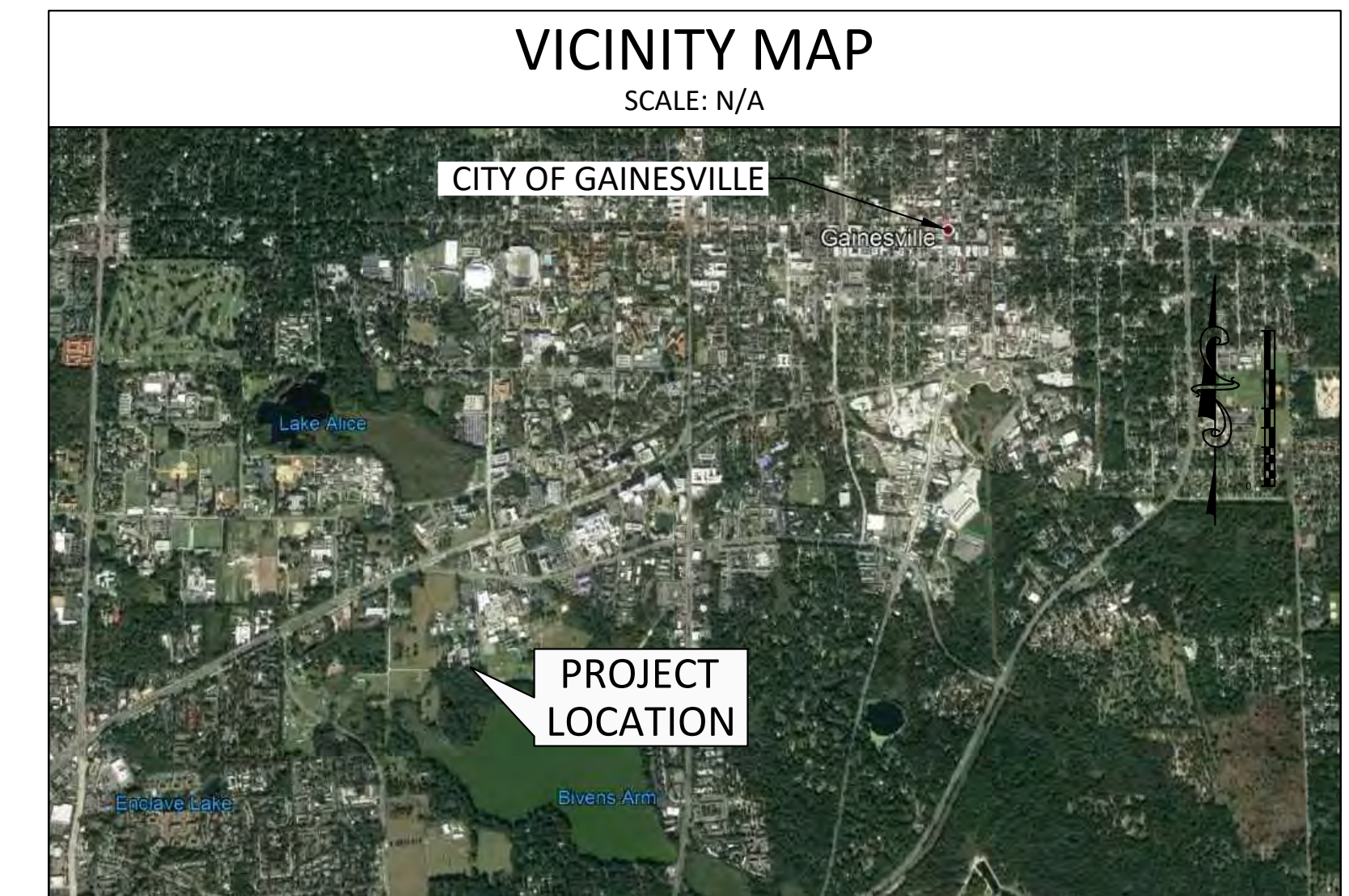
Data Science and Information Technology Building

- Questions?
- Committee Approval/Recommendation

SCHEMATIC PLANS FOR UF ANIMAL SCIENCES AND RITCHY ROAD PARKING

MP05009 - Animal Sciences Parking

| Sheet List Table | |
|------------------|---|
| Sheet Number | Sheet Title |
| C0.0 | COVERSHEET |
| C1.0 | MASTER GEOMETRY |
| C2.0 | ZOOMED GEOMETRY (RITCHY ROAD) |
| C2.1 | ZOOMED GEOMETRY (ALT 1 ANIMAL SCIENCES) |
| C2.2 | ZOOMED GEOMETRY (ALT 2 ANIMAL SCIENCES) |



SITE ADDRESS: 2250 SHEALY DR, GAINESVILLE, FL 32608



7525 NW 4th BOULEVARD, SUITE 70 / GAINESVILLE, FL 32607

FEBRUARY 2020

DRMP PROJECT NO. 17-0143.025

PARKING SPOT COUNT

RITCHY ROAD PARKING COUNT: 77 SPOTS

UF ANIMAL SCIENCES ALT 1 PARKING COUNT: 143 SPOTS

UF ANIMAL SCIENCES ALT 2 PARKING COUNT: 147 SPOTS

TOTAL ALT 1 PARKING: 220 SPOTS

TOTAL ALT 2 PARKING: 224 SPOTS

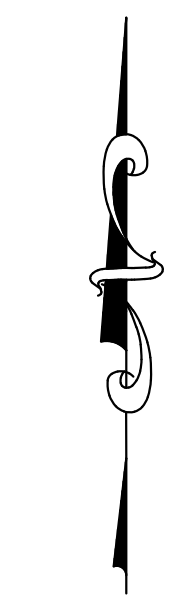
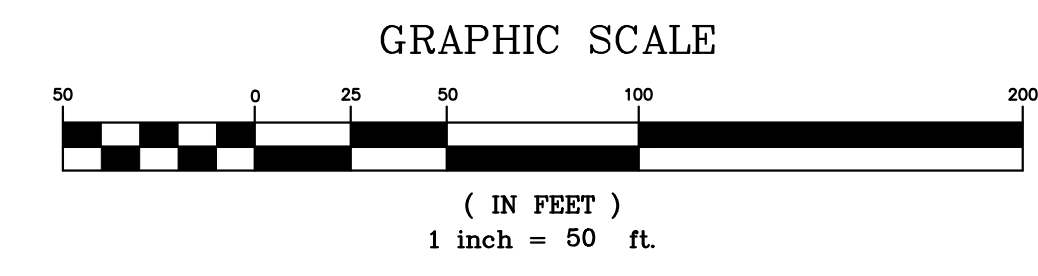
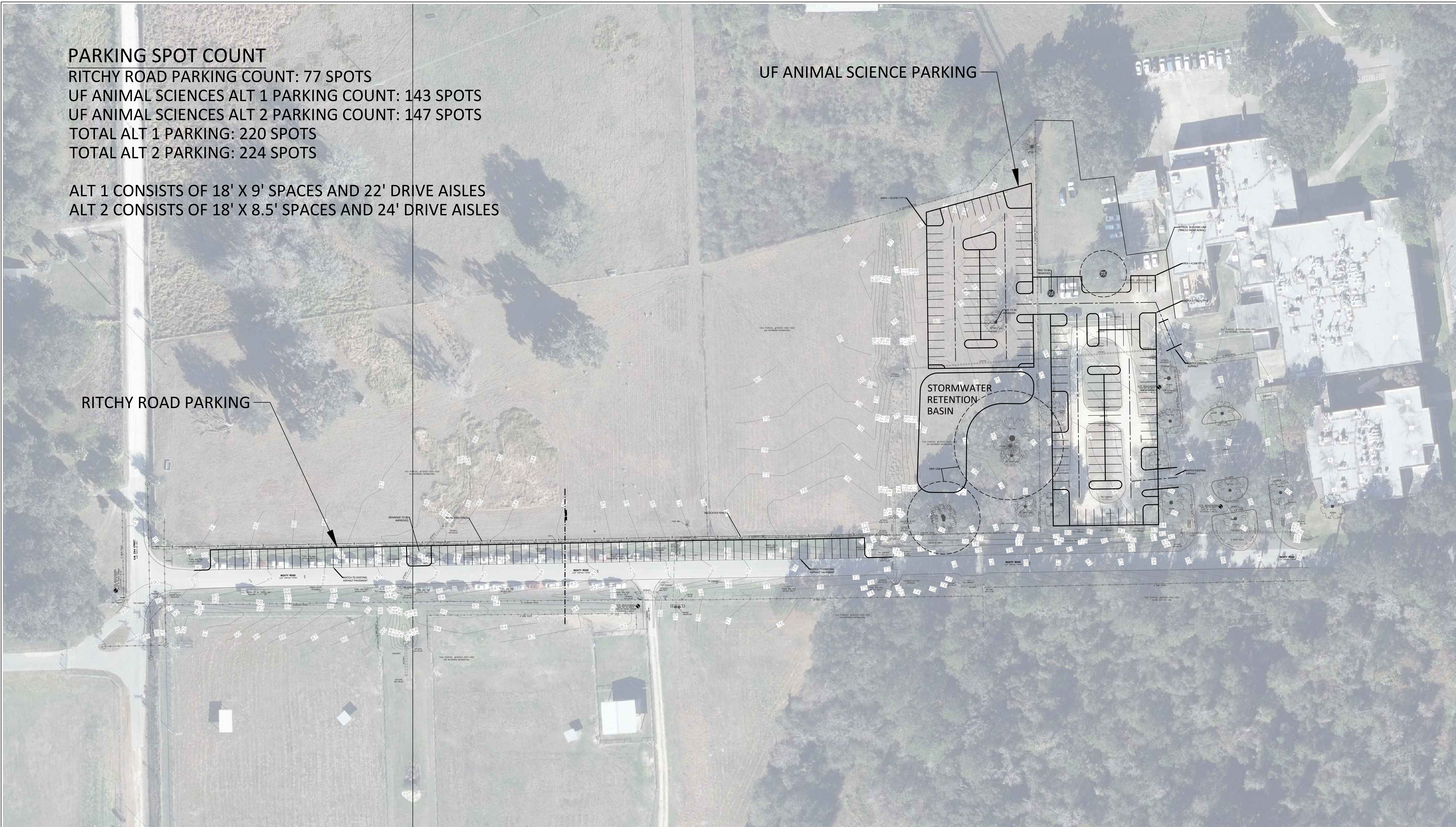
ALT 1 CONSISTS OF 18' X 9' SPACES AND 22' DRIVE AISLES

ALT 2 CONSISTS OF 18' X 8.5' SPACES AND 24' DRIVE AISLES

UF ANIMAL SCIENCE PARKING

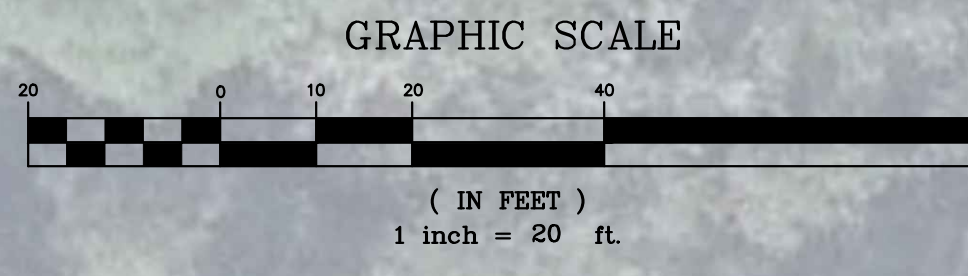
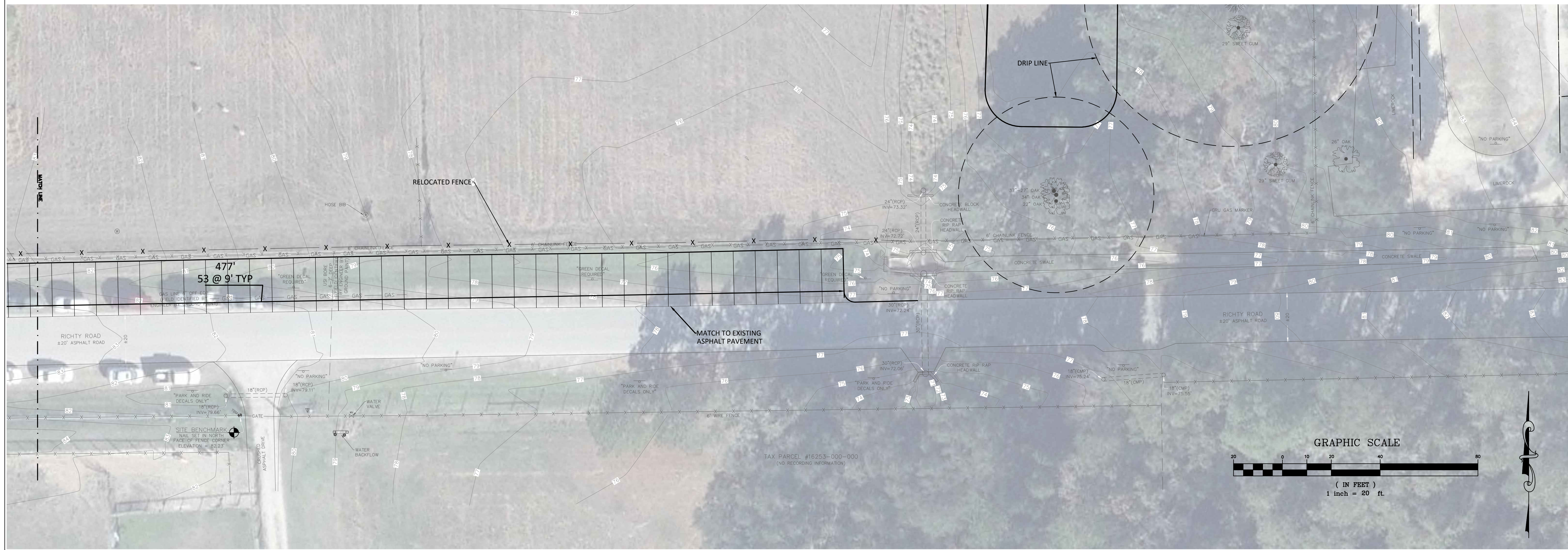
RITCHY ROAD PARKING

STORMWATER RETENTION BASIN



| | | | | | |
|---|--|-----------------|---|--------------------|--|
| DRMP <small>ENGINEERS • SURVEYORS • PLANNERS • SCIENTISTS</small> <small>Certificate of Authorization No. 2648 9411, Brandon Lane, Gainesville, Florida 32614 Phone: 407.896.0554 Fax: 407.896.4838 WWW.DRMP.COM</small> | DRMP, Inc. | | ENGINEER OF RECORD: State of Florida# XXXXX PROJECT NO.: 17-0143.025 SCALE: 1" = 50' DATE: FEBRUARY, 2020 DRAWING: C1.0 | | |
| | UF ANIMAL SCIENCES PARKING GAINESVILLE, FLORIDA | | MASTER GEOMETRY | | |
| | DESIGNED BY XXX | DRAWN BY XXX | CHECKED BY XXX | APPROVED BY XXX | NO. |
| | DO NOT SCALE THIS DRAWING - DIMENSIONS AND NOTES TAKE PREFERENCE | | | | R E V I S I O N S DESCRIPTION BY |

Ritchy Road Parking: 77 Spots



| REVISIONS | | | |
|-----------|------|-------------|----|
| NO. | DATE | DESCRIPTION | BY |
| | | | |
| | | | |
| | | | |
| | | | |
| | | | |

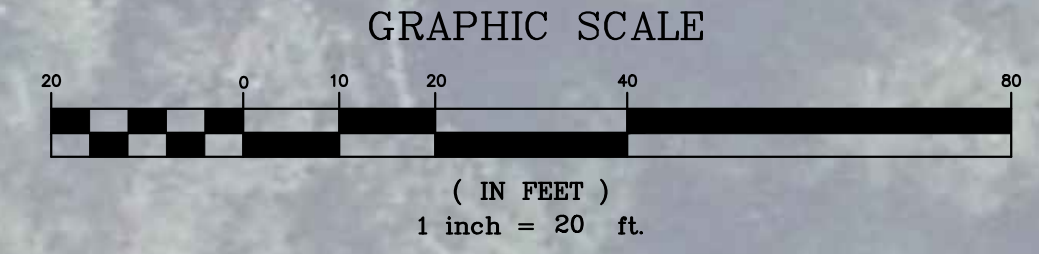
| | |
|-------------|-----|
| DESIGNED BY | XXX |
| DRAWN BY | XXX |
| CHECKED BY | XXX |
| APPROVED BY | XXX |

**ZOOMED GEOMETRY
(RITCHY ROAD)**
**UF ANIMAL SCIENCES
PARKING
GAINESVILLE, FLORIDA**

DRMP
 ENGINEERS • SURVEYORS • PLANNERS • SCIENTISTS
 Certificate of Authorization No. 2648
 9411 Barkin Lane, Gainesville, Florida 32614
 Phone: 407.896.0554 Fax: 407.896.8538 WWW.DRMP.COM

DRMP, Inc.
 ENGINEER OF RECORD:
 State of Florida# XXXXX
 PROJECT NO.:
17-0143.025
 SCALE:
1" = 20'
 DATE:
FEBRUARY, 2020
 DRAWING:
C2.0

UF ANIMAL SCIENCES ALT 1 PARKING: 143 SPOTS



| REVISIONS | | DESIGNED BY | NO. | DATE | DESCRIPTION |
|-----------|--|-------------|-----|------|-------------|
| | | XXX | | | |
| | | XXX | | | |
| | | XXX | | | |
| | | XXX | | | |

| | |
|---|--|
| UF ANIMAL SCIENCES ZOOMED GEOMETRY (ALT 1 ANIMAL SCIENCES) | |
| UF ANIMAL SCIENCES PARKING GAINESVILLE, FLORIDA | DO NOT SCALE THIS DRAWING - DIMENSIONS AND NOTES TAKE PREFERENCE |

| | |
|--|--|
| DRMP ENGINEERS • SURVEYORS • PLANNERS • SCIENTISTS | Certificate of Authorization No. 2648 9411 Barkman Lane Gainesville, Florida 32614 Phone: 407.896.0554 Fax: 407.896.6838 WWW.DRMP.COM |
|--|--|

| |
|--|
| ENGINEER OF RECORD: State of Florida# XXXXX PROJECT NO.: 17-0143.025 SCALE: 1" = 20' DATE: FEBRUARY, 2020 DRAWING: C2.1 |
|--|