



University of Florida

---

# CALM Plans Follow-up Friday

\*This meeting is being recorded 

4/1/2022





## Today's Meeting & Goals:

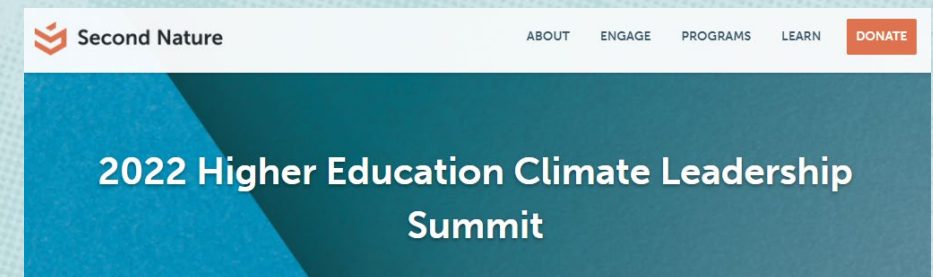
---

- Introduction & “The Why”
- Core Values
- Schedule Update
- Recap of Site Visit #3
- Introduction to Serial Testimony
- Serial Testimony
- Activity
- Open Discussion
- Site Visit and Packet Feedback

## Introduction

- Two site visits to re-cap today:
  - Graham Woods & Fraternity Wetlands
  - Harmonic Woods & Law School Woods
- This is an opportunity for further discussion, catching up and documenting findings.
- Feel free to eat your lunch!
- Meeting Goals
  - Review Previous Site Visits
  - Brainstorming overarching themes

Reminder:





## Core Values

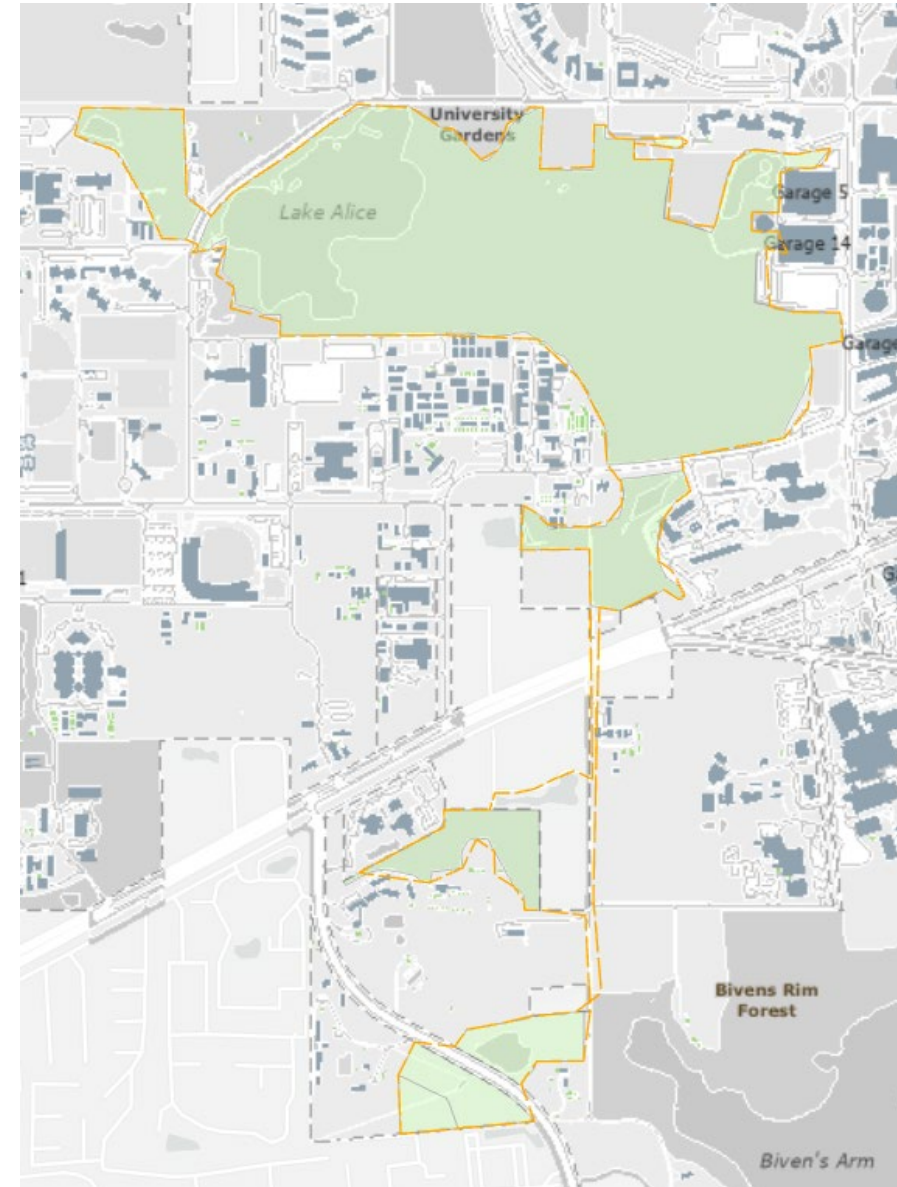
---

- Committing to full participation
- Sharing collective wisdom for inclusive solutions
- Accepting shared responsibility
- Embracing creativity and a “what if?” mindset
- Supporting open & equitable discussion
- **Have Fun!**



## Schedule Update:

- By request of the VPs office, we are expediting CALM plan update completion date
- Condensing site visits
  - Next week – Bat House Woods, Lake Alice, Lake Alice South, Swine Unit Woods & Solar Park
  - Walking Distance – 7.4 miles
  - Estimated time – 3.5 hours (at a relaxed pace)







## Site Visit #3

- Overview of what we saw, heard, smelled....
- Chime in!





## Introduction to Serial Testimony

---

- Facilitation technique to ensure all voices are heard
- Diverse group of faculty, staff and students with different backgrounds, passions and intentions as it relates to conservation
- How it works:
  - Each participant is given one minute to speak
  - While a participant is speaking, attendees actively listen but do not react (stay on mute, do not write in the chat).
- There will be ample opportunity for dialogue following this exercise



### LEARNING FOR JUSTICE

1. It requires participants to speak for themselves.
2. Participants speak about their own experiences, rather than their opinions.
3. It prevents single individuals' views from becoming the focus of discussion.
4. It brings each person into the conversation, if they wish.
5. It establishes a predictable order for people to speak in.
6. It provides the opportunity for everyone in a group to hear a wide variety of perspectives in a comparatively short time.
7. It allows matter of difference and commonality to be seen side-by-side.
8. It prevents disagreement and argument.
9. It interferes with familiar pecking orders or patterns of domination and subordination in speaking.
10. It respects freely chosen silence.



## Let's take a few minutes to jot down our thoughts...

---

### Guiding Questions

- Are there any obvious human interventions that impact the site negatively? Positively?
- Is the conservation area accessible to all types of users (ex. Differently abled persons)?
- How is this conservation area used and how could it be used in the future (nature walks, teaching, general exercise, mindfulness, etc.)?
- How do the surrounding sites and uses potentially impact the conservation area?
- Is this conservation area actively maintained? Should it be?
- Are the boundaries of the conservation area clearly distinguishable?
- Are there any new best management practices we should consider in this conservation area?
- We encourage you to pause frequently and actively consider what your different senses are experiencing (hear, see, smell, feel).
- Are there any additional observations/considerations we should be aware of for this conservation area (ex. Rare plant species)?



## Serial Testimony

---

### Guiding Questions

- Are there any obvious human interventions that impact the site negatively? Positively?
- Is the conservation area accessible to all types of users (ex. Differently abled persons)?
- How is this conservation area used and how could it be used in the future (nature walks, teaching, general exercise, mindfulness, etc.)?
- How do the surrounding sites and uses potentially impact the conservation area?
- Is this conservation area actively maintained? Should it be?
- Are the boundaries of the conservation area clearly distinguishable?
- Are there any new best management practices we should consider in this conservation area?
- We encourage you to pause frequently and actively consider what your different senses are experiencing (hear, see, smell, feel).
- Are there any additional observations/considerations we should be aware of for this conservation area (ex. Rare plant species)?



## Jamboard

What is one idea that you had, or an idea that stood out to you during Wednesday's site visit?

Native plant garden—herbaceous perennials south side harmonic woods

Update signage in kiosk - trails map/education

Law School Woods potential for accessible access to nature since it is generally flat, near parking/transit, near neighborhoods and campus housing. This is also accessible to off-campus visitors.

Consider uses for these spaces - ADA accessibility or conservation

Thinking about (with TAPS) a short-term /temp parking spaces to encourage joggers and runners to explore all 31 conservation areas.

Explore a more flex/site-tailored design guidelines for non-permanent structures (Gazebos, seats, etc.)

These sites highlighted how non-campus users might be in the conservation areas, like the local mountain bike groups, and how maintenance and management concerns might need

No-mow and reestablish conservation plantings on SW corner of Harmonic - potentially also along west side pending confirmation of underground utility conflicts in both areas.

Question: are the CAs planned/managed collectively for connectivity? How could we increase connectivity, for human users and perhaps wildlife/biodiversity (if not already the case)?

Using a green crosswalk (or some sort of unique indicator) in the street indicating the location of a trail head/conservation area (for all conservation areas on campus)

A long-term/outstanding committee to follow through on the actions of this steering committee.



## Discussion

---

# Open Discussion



## Discussion Point

---

# Site Visit and Packet Feedback