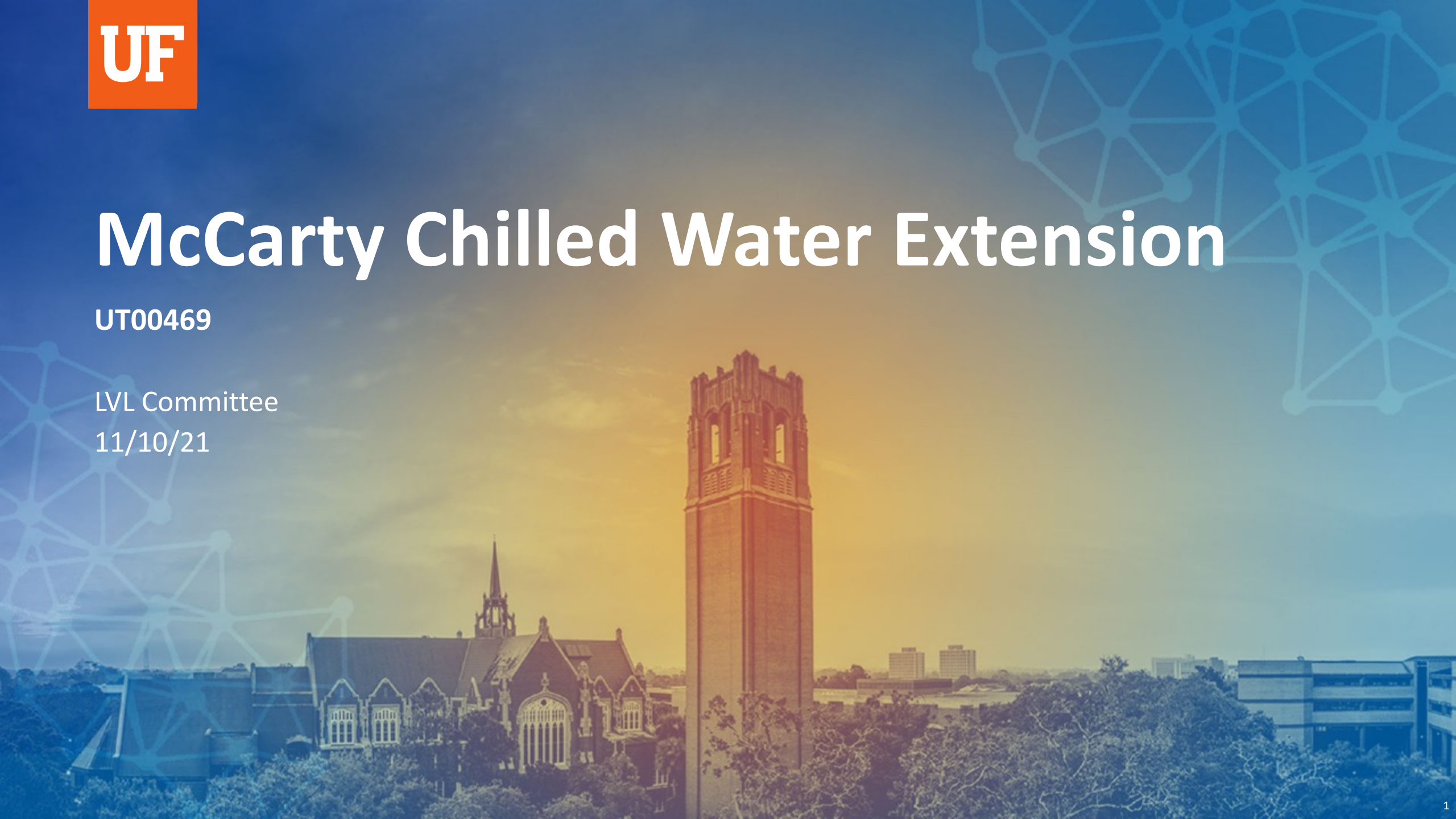


McCarty Chilled Water Extension

UT00469

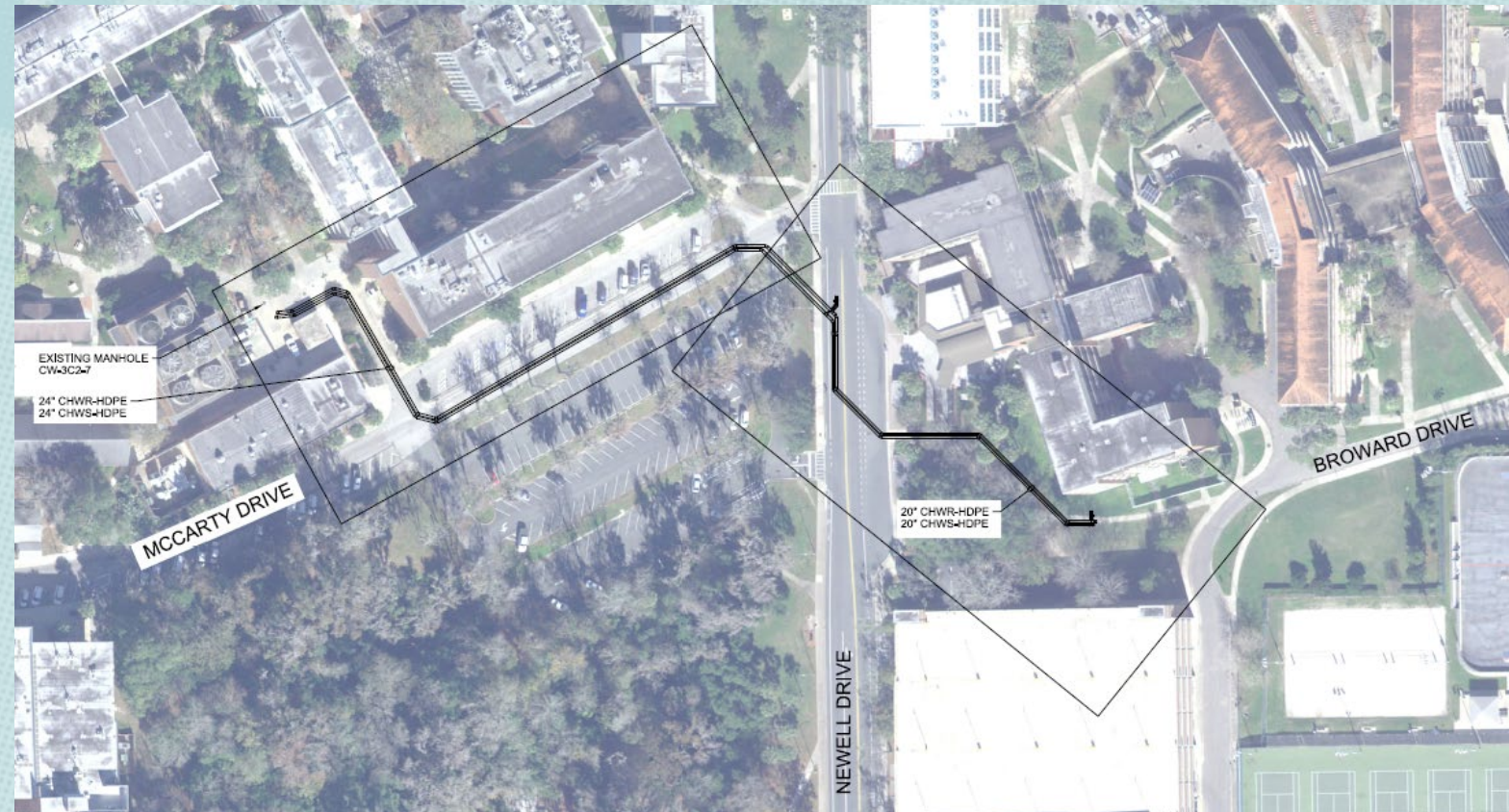
LVL Committee

11/10/21



Project objective

- This connection will provide chilled water for future buildings, specifically the future Gator Residential Complex (UF-654) and future UF/IFAS Natural Resources Building.
- Based on the results of the UF-623 Phase 3 Planning Study Jacobs recommends a new chilled water line to connect the McCarty Chilled Water Plant and existing manhole CW-3C2-9 with an extension to the existing lines south of Rinker Hall

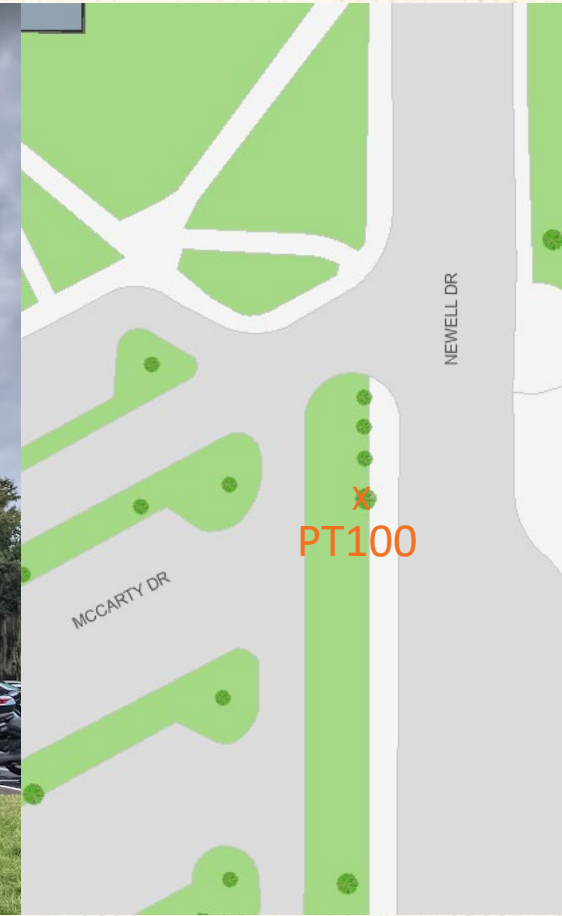


Project site overview



[illegible]

PT100: 12" Palm

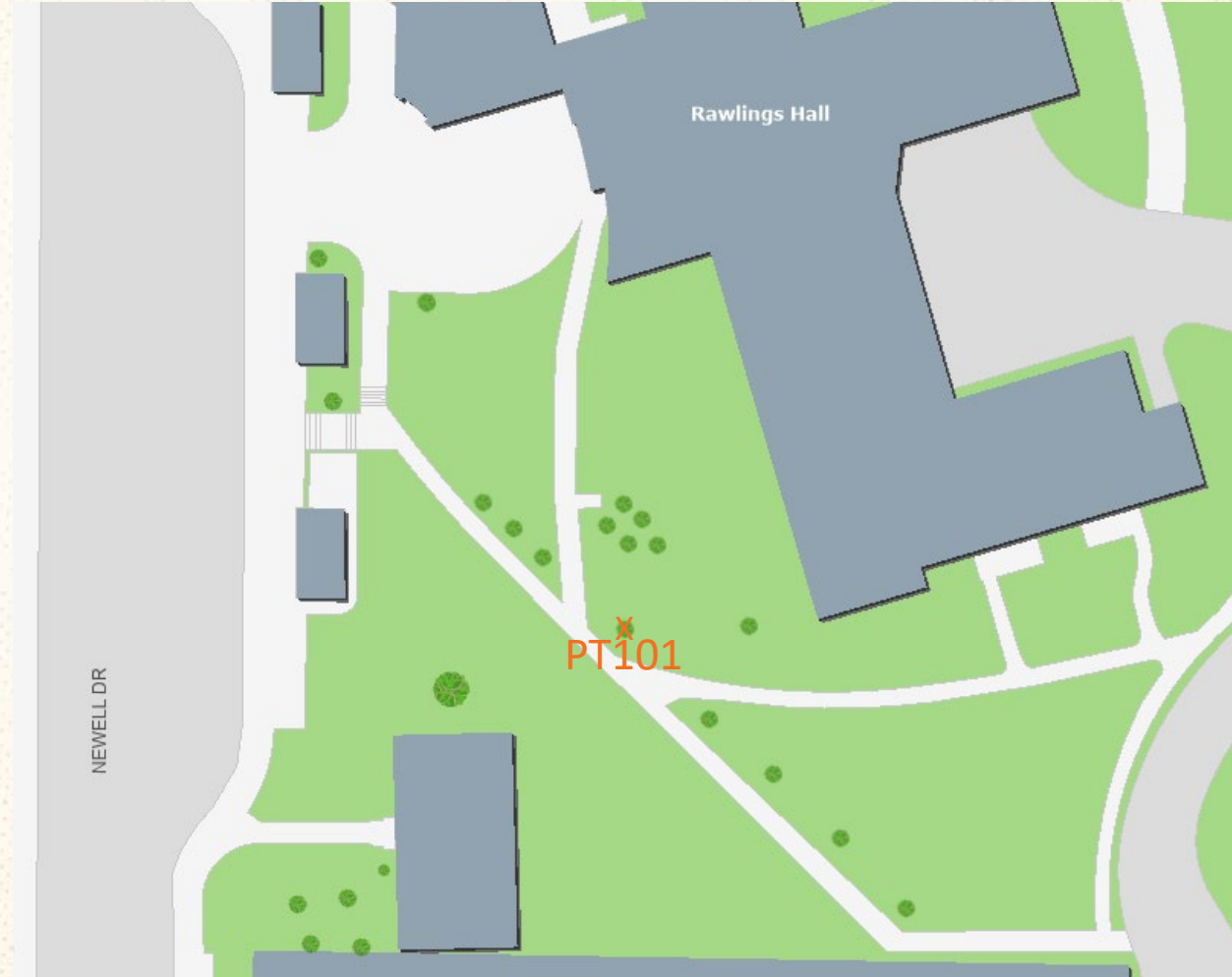


Live Oak Tree Canopy

The LVL Committee requested that the project develop a landscaping plan to replant trees in the area rather than pay into the tree mitigation fund. However, after further investigation of the area, it was discovered that the Elm trees in the area are infringing on the tree canopy of the 36" and 24" Heritage Live Oak trees (pictured below).



PT101: 15" Elm



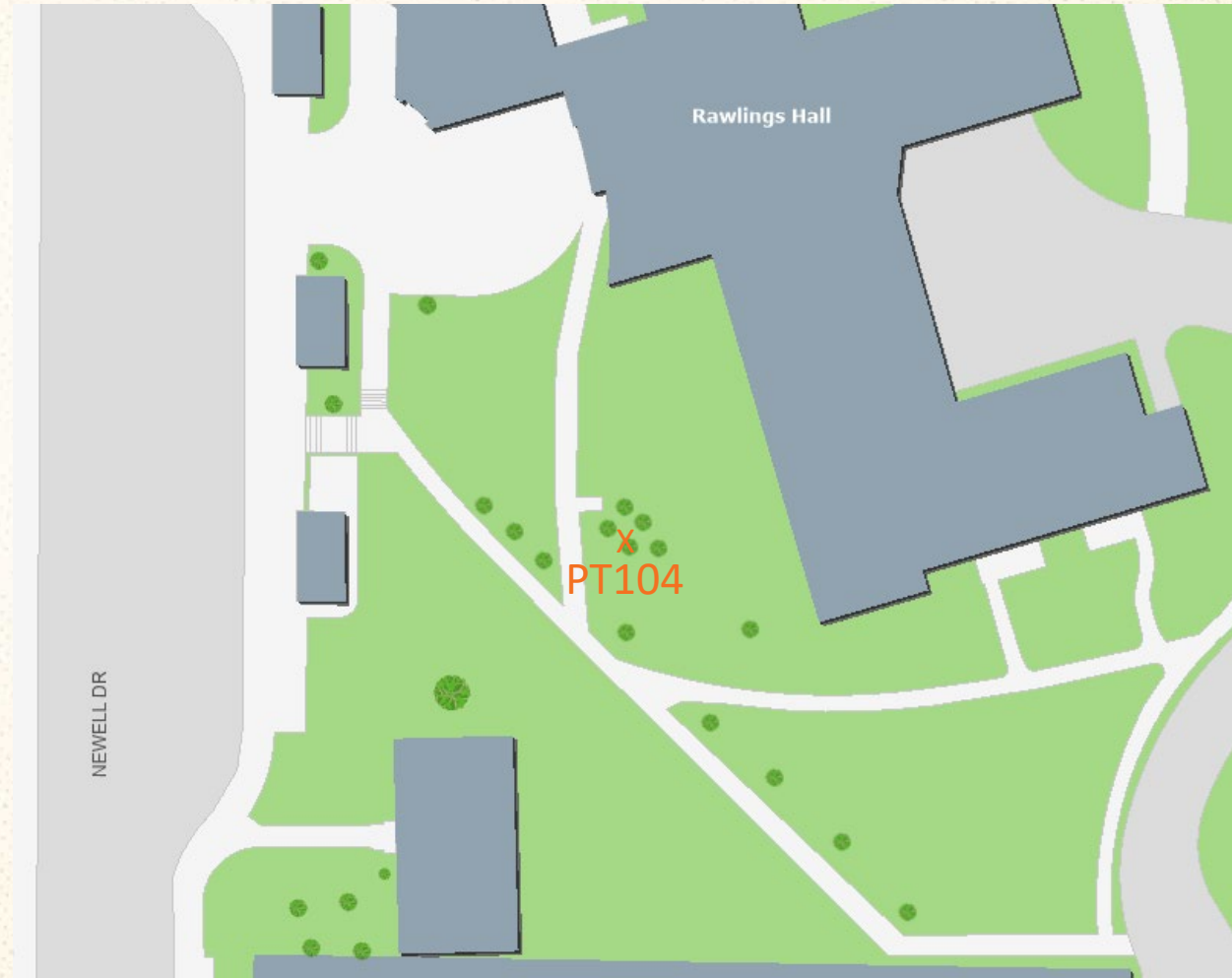
PT102: 11" Palm



PT103: 15" Elm



PT104: 12" Palm



LVL Committee requested the following to remain:

PT105: 14" Palm

PT106: 12" Palm

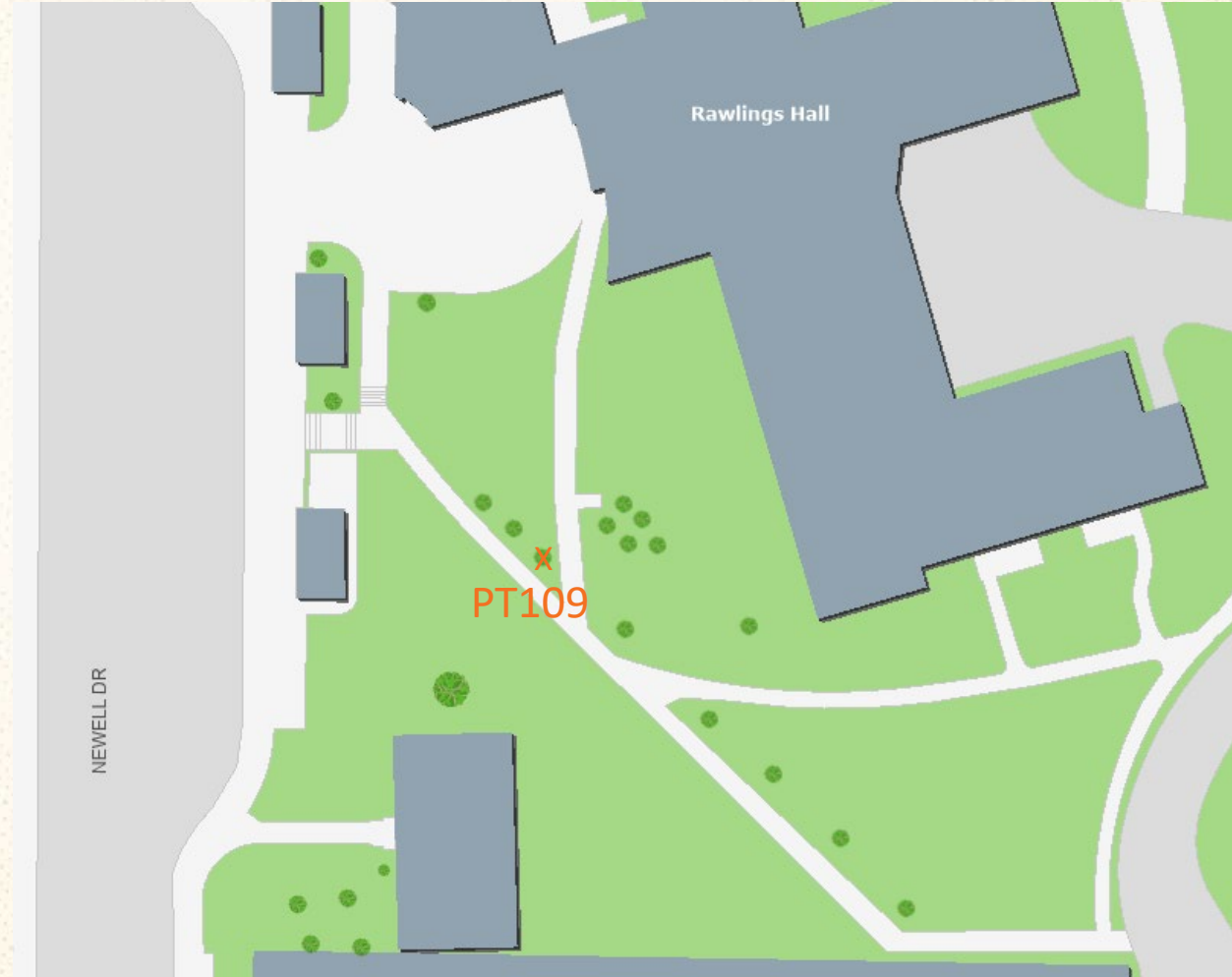


PT107: 15" Elm

PT108: 13" Elm

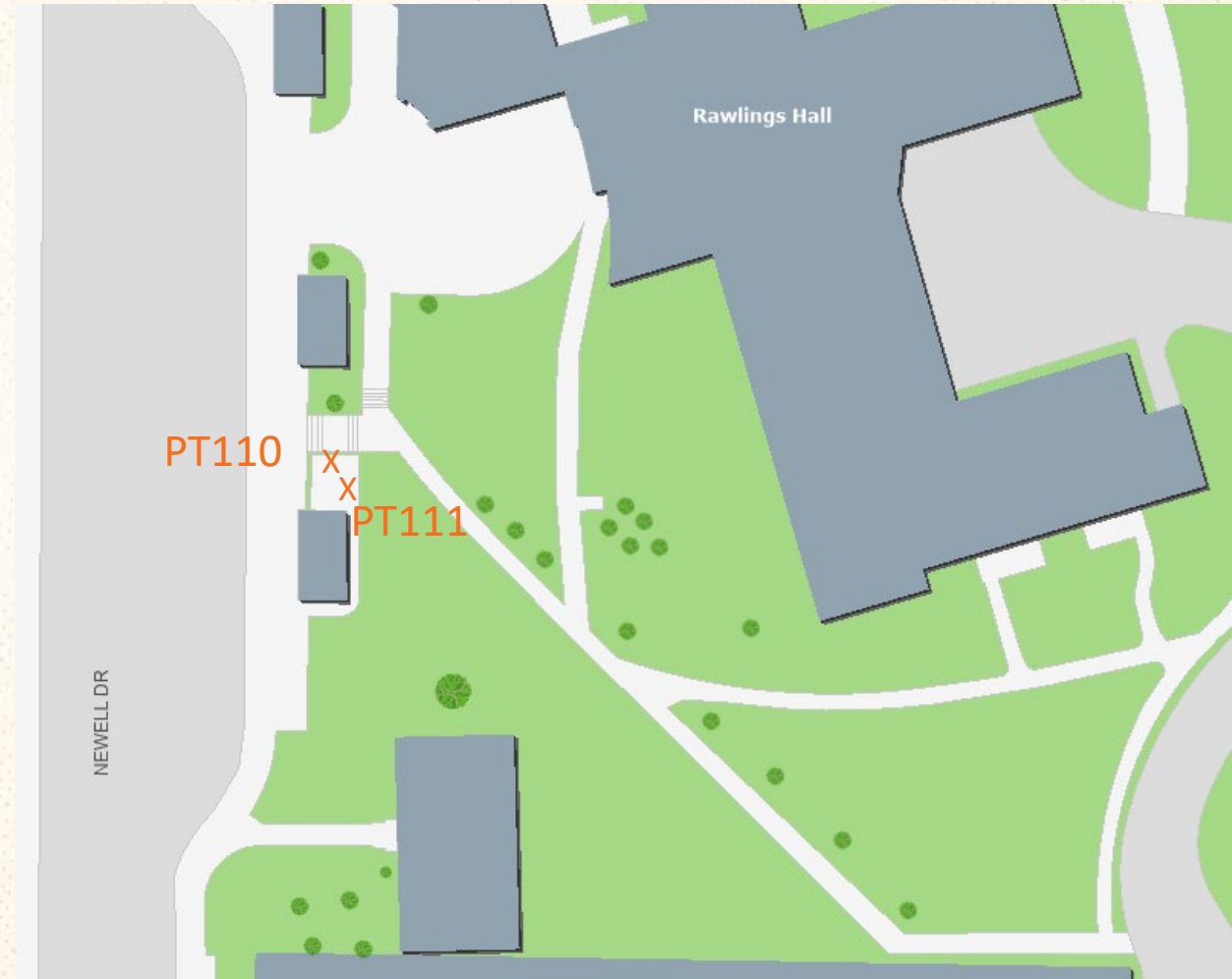


PT109: 13" Elm

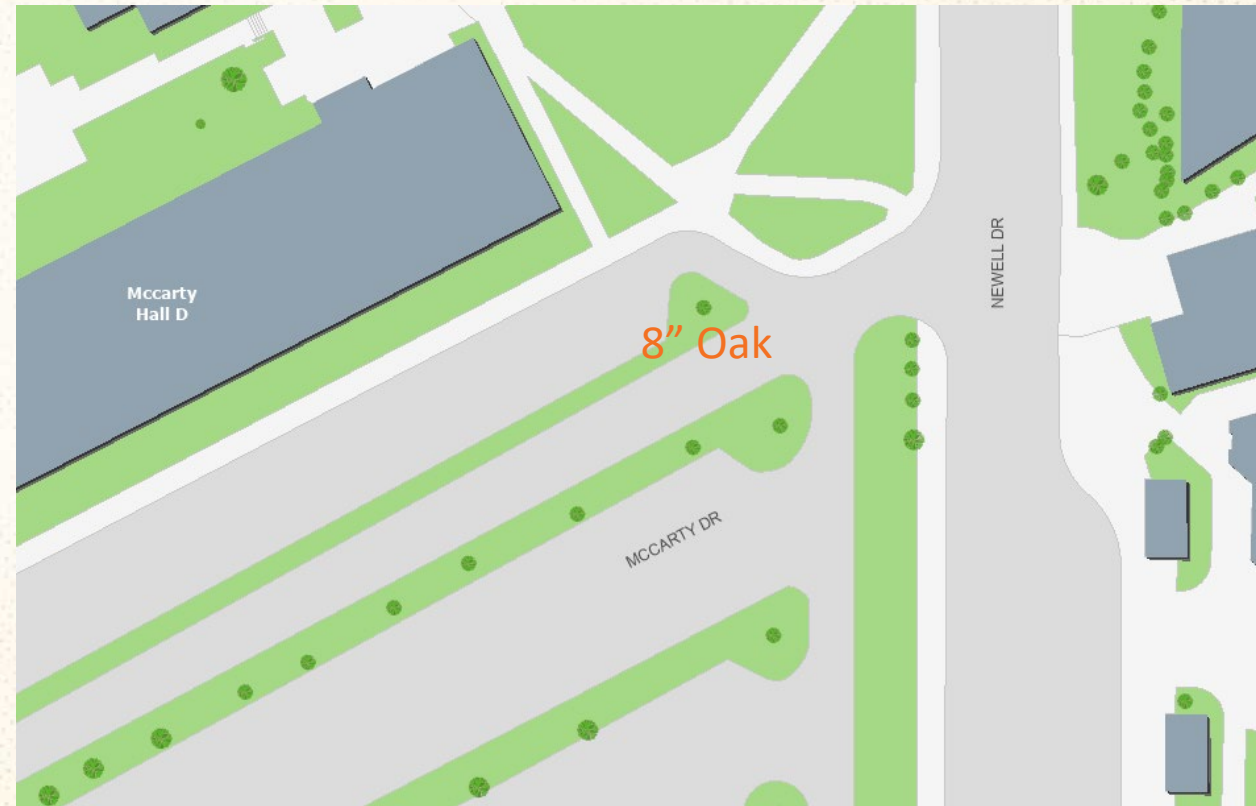


PT110: 10" Palm

PT111: 12" Palm

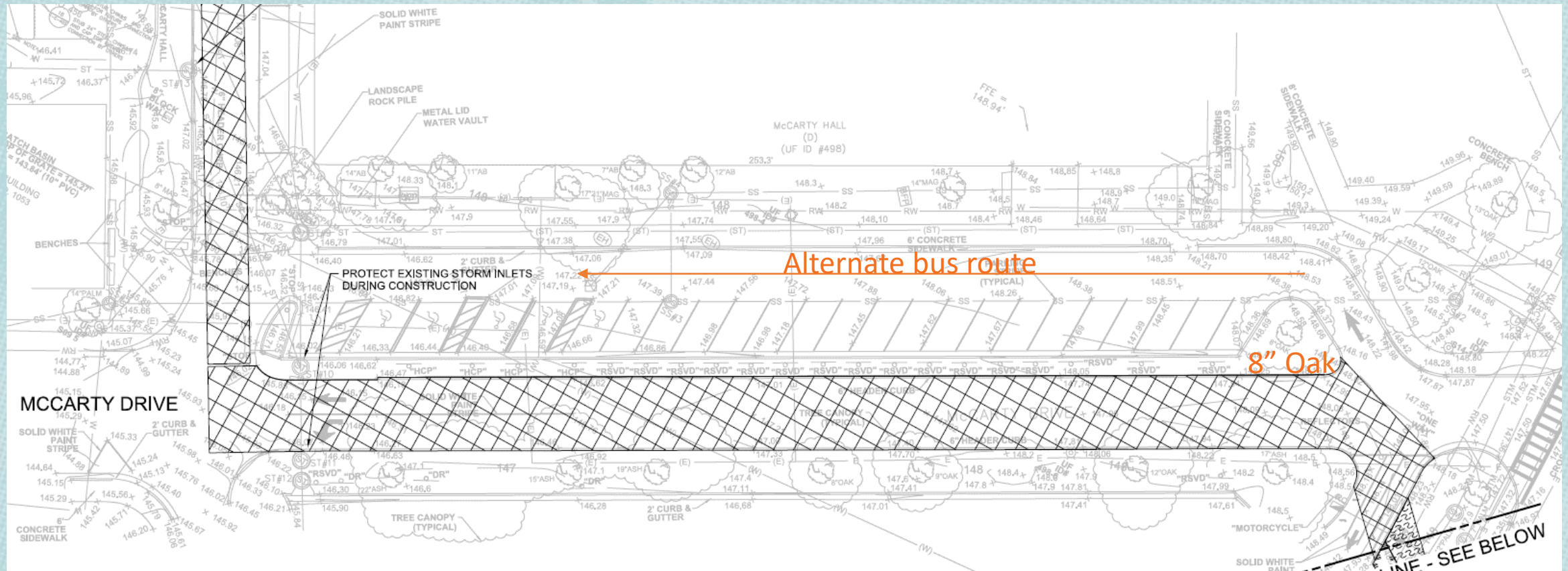


PT112: 8" Oak



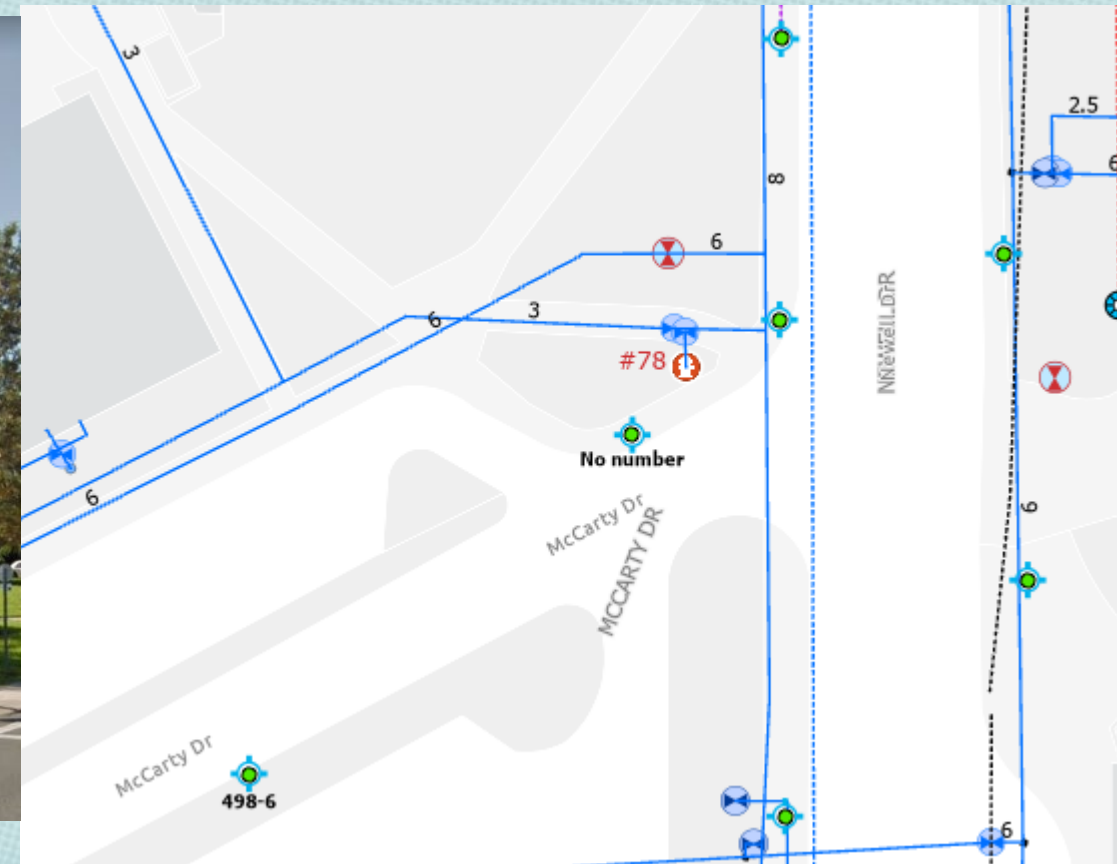
The reserved parking lot north of McCarty Drive will be considered as an alternate route to maintain bus routes and emergency vehicle access during construction.

The 8" Oak tree on the eastern entrance to the parking lot is requested for removal to maintain an adequate turn radius for buses.



McCarty Parking Lot

The LVL Committee requested that the project investigate temporarily removing the light pole shown below to increase the turn radius rather than removing the 8" Oak. However, there is also a fire hydrant in the vicinity. Having the buses turn so closely to the fire hydrant poses additional risk.



Tree Impact Summary

Species	Size (inches)	Quantity
Palm	10	1
	11	1
	12	3
Elm	13	2
	15	3
Oak	8	1

TREE SIZE (DBH)	COST TO RELOCATE EXISTING TREE *	COST TO MITIGATE CANOPY TREES (ratios incorporated)	COST TO MITIGATE Water Oaks, Laurel Oaks, Loblolly Pines, Sugarberry and Sweetgums (ratios incorporated)	COST TO MITIGATE UNDERSTORY TREES (ratios incorporated)**
5-15	\$500	\$500	\$500	\$500

11 known tree impacts – no heritage trees

11*\$500 = \$5,500

Request **\$5,500** paid to tree mitigation fund

Questions?



UF

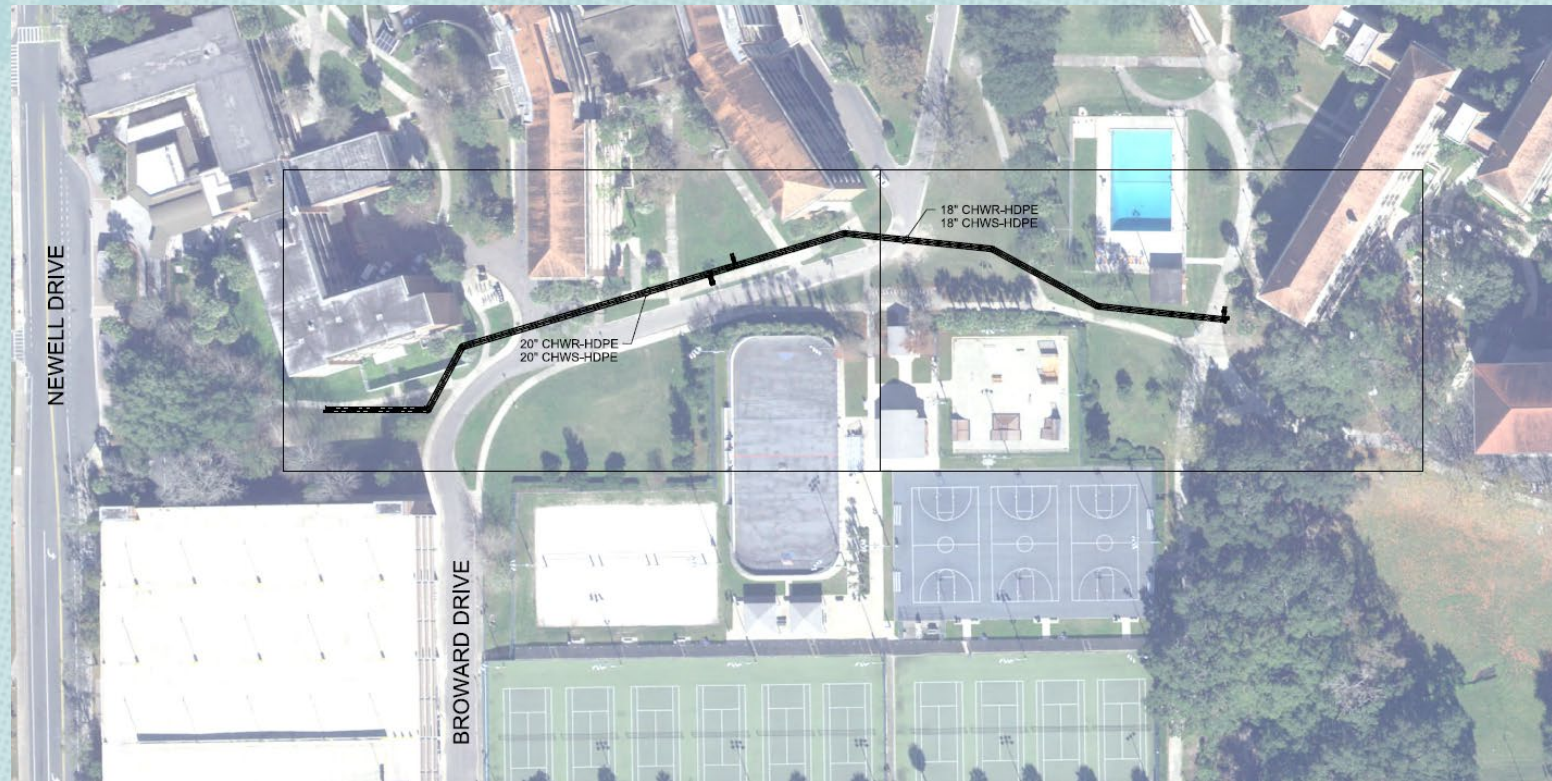
Gator Residential Chilled Water Infrastructure

UT00470

LVL Committee
11/10/21

Project objective

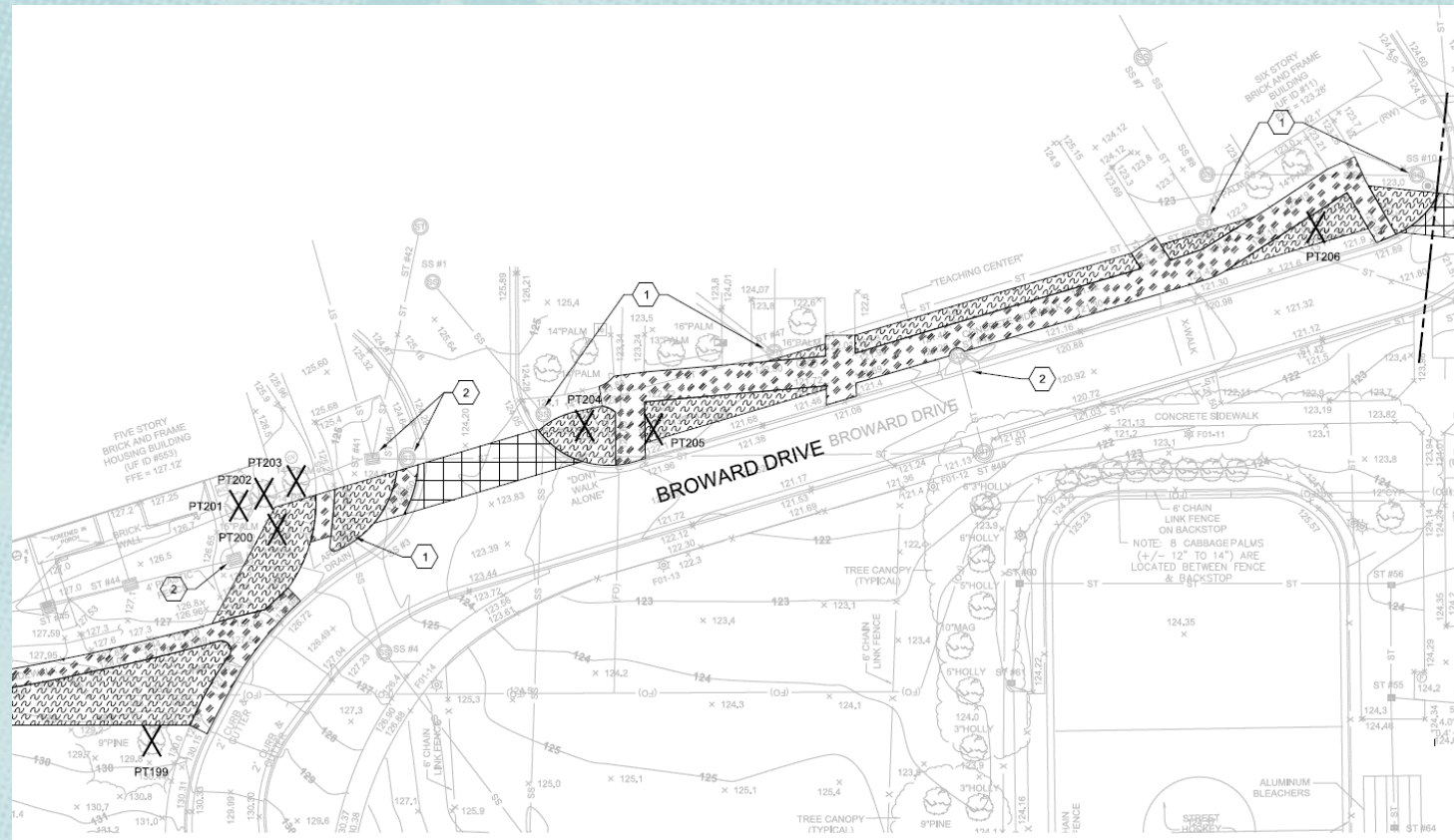
- Will complete a critical connection to reduce distribution restrictions and increase service reliability of the North Campus system.
- Tees with direct buried valves will be installed for connections to the future buildings at the Rawlings Hall and Broward Hall.
- Based on the results of the UF-623 Phase 3 Planning Study Jacobs recommends a new chilled water line to connect the McCarty Chilled Water Plant and existing manhole CW-3C2-9 with an extension to the existing lines south of Rinker Hall.



Project site overview



Tree impact overview



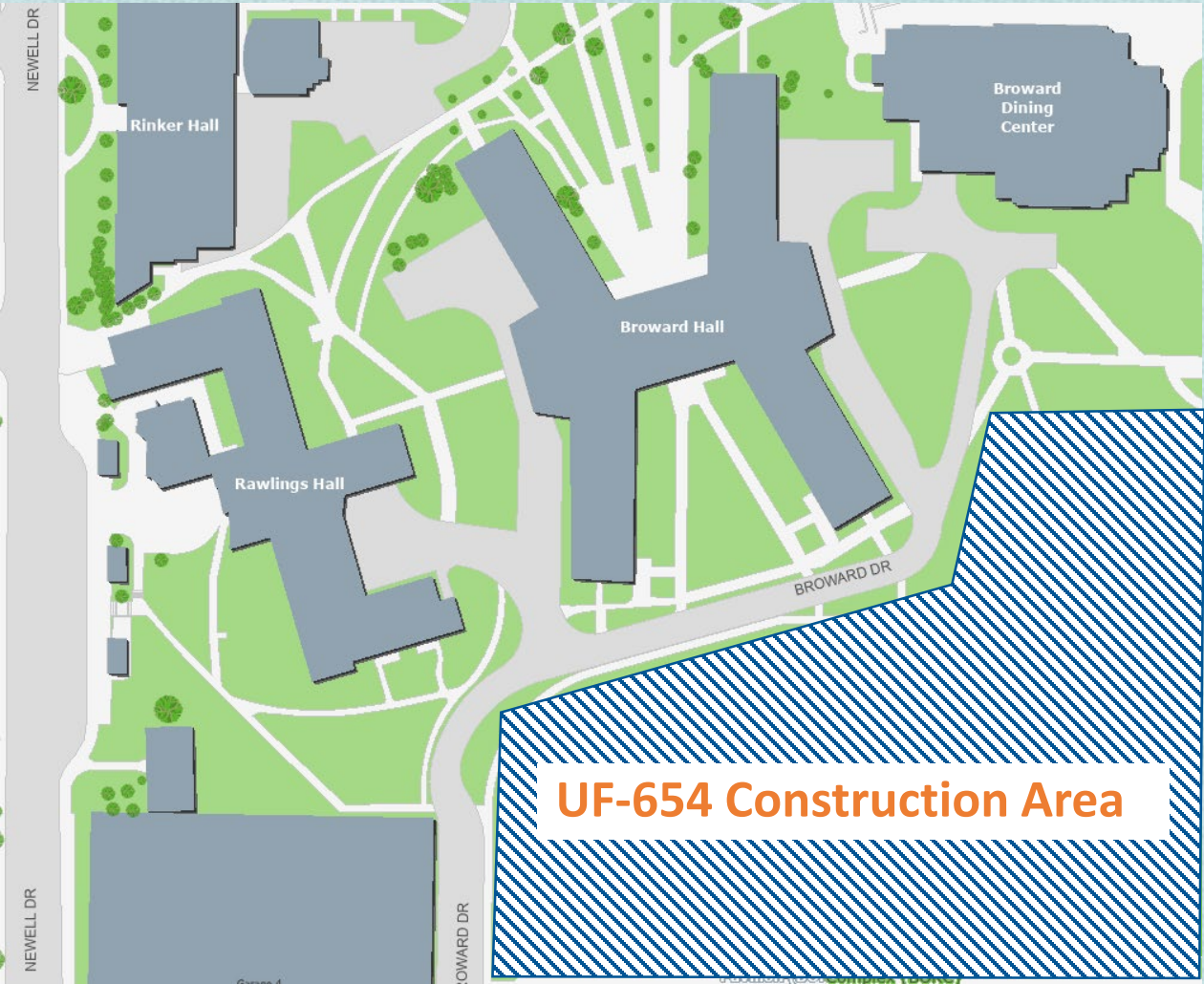
Broward Drive

Key Considerations:

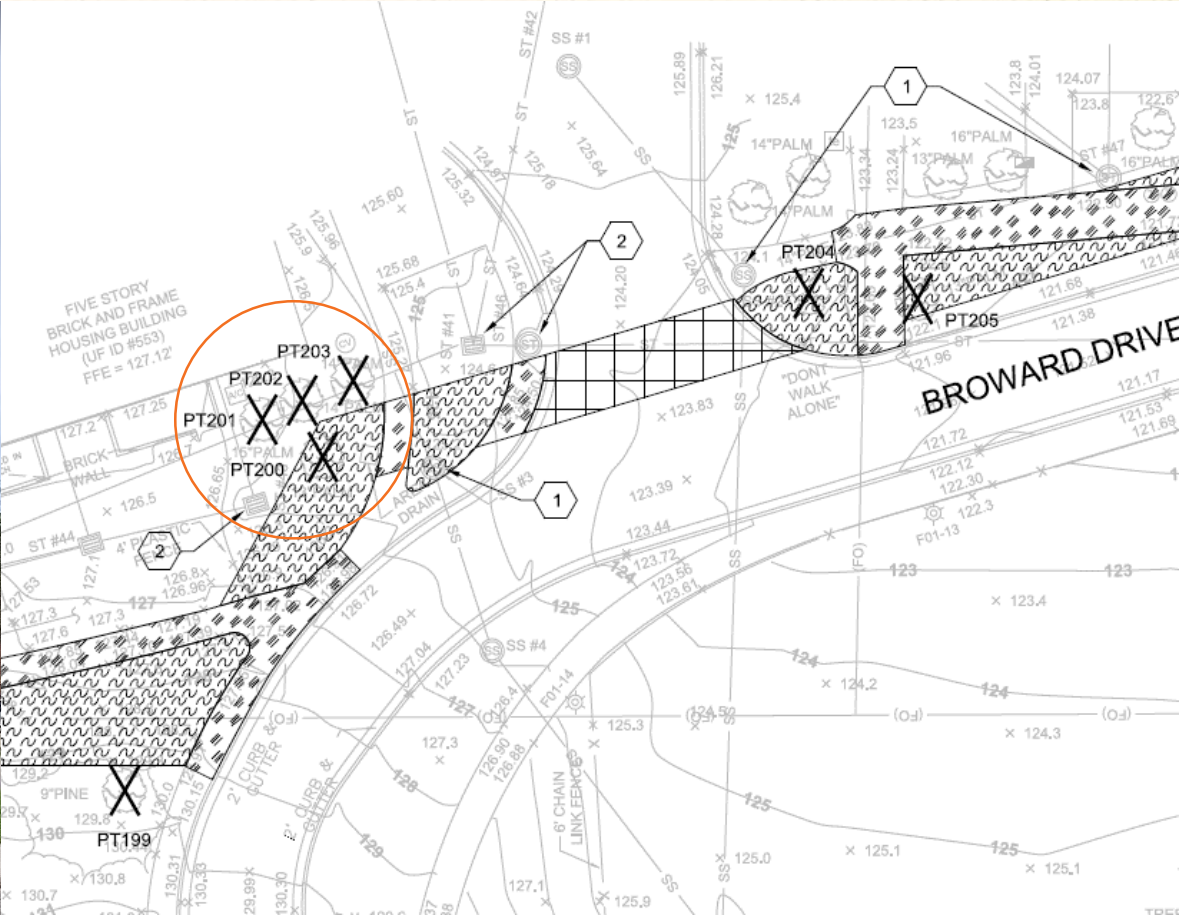
- Emergency vehicle access/fire lane
- Service vehicle access
- Garbage pick-up for Rawlings, Broward, and Broward Dining Center
- Food deliveries via full-size tractor trailers to Broward Dining Center. Numerous deliveries per day.

Alternative to close Broward Drive:
Route chilled water along Broward Drive and coordinate vehicle access through the active UF-654 construction site (if possible). This is recognized but **not** recommended.

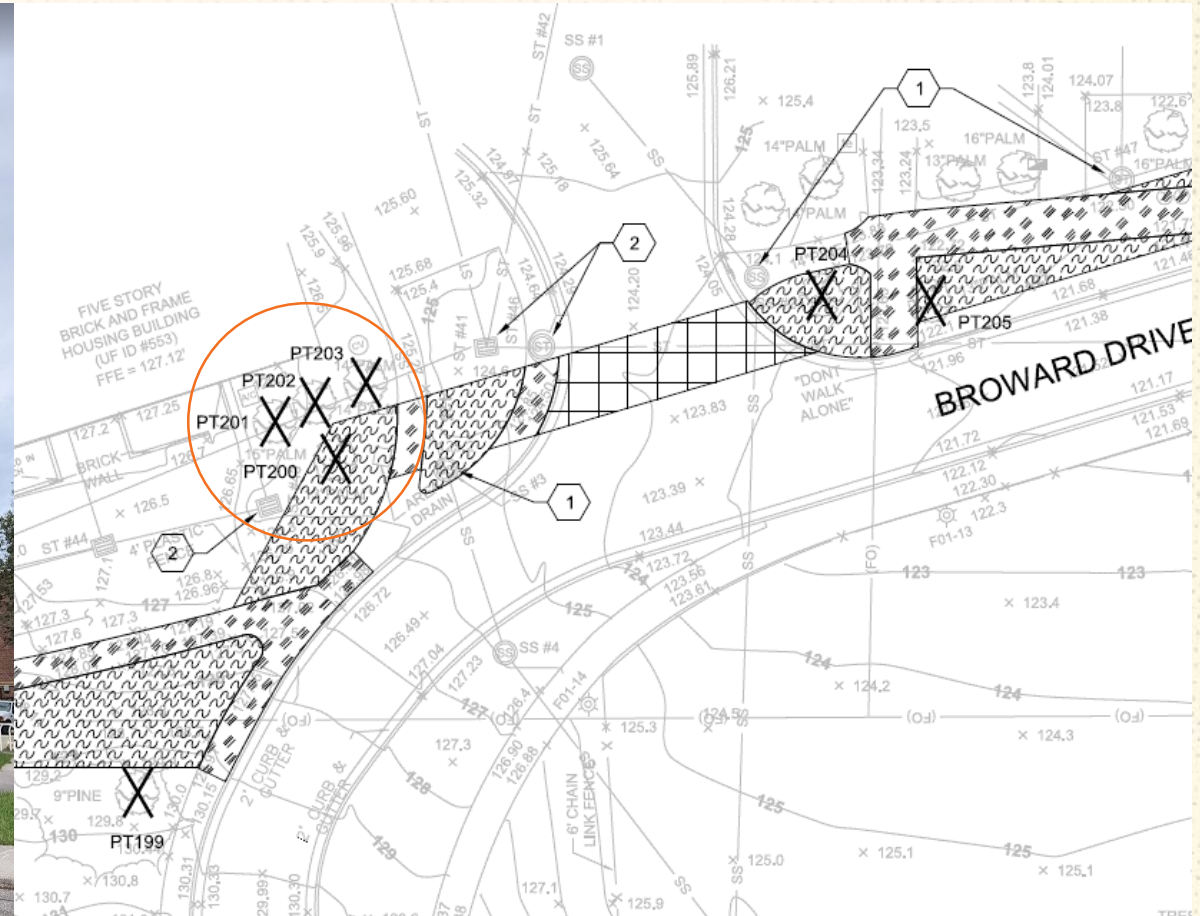
Pros	Cons
Less tree impacts	Fire lane closed
Sidewalks and southern pedestrian building entrances to remain open	Constant coordination to maintain a vehicle route through UF-654 site
	Relocate trash pick-up



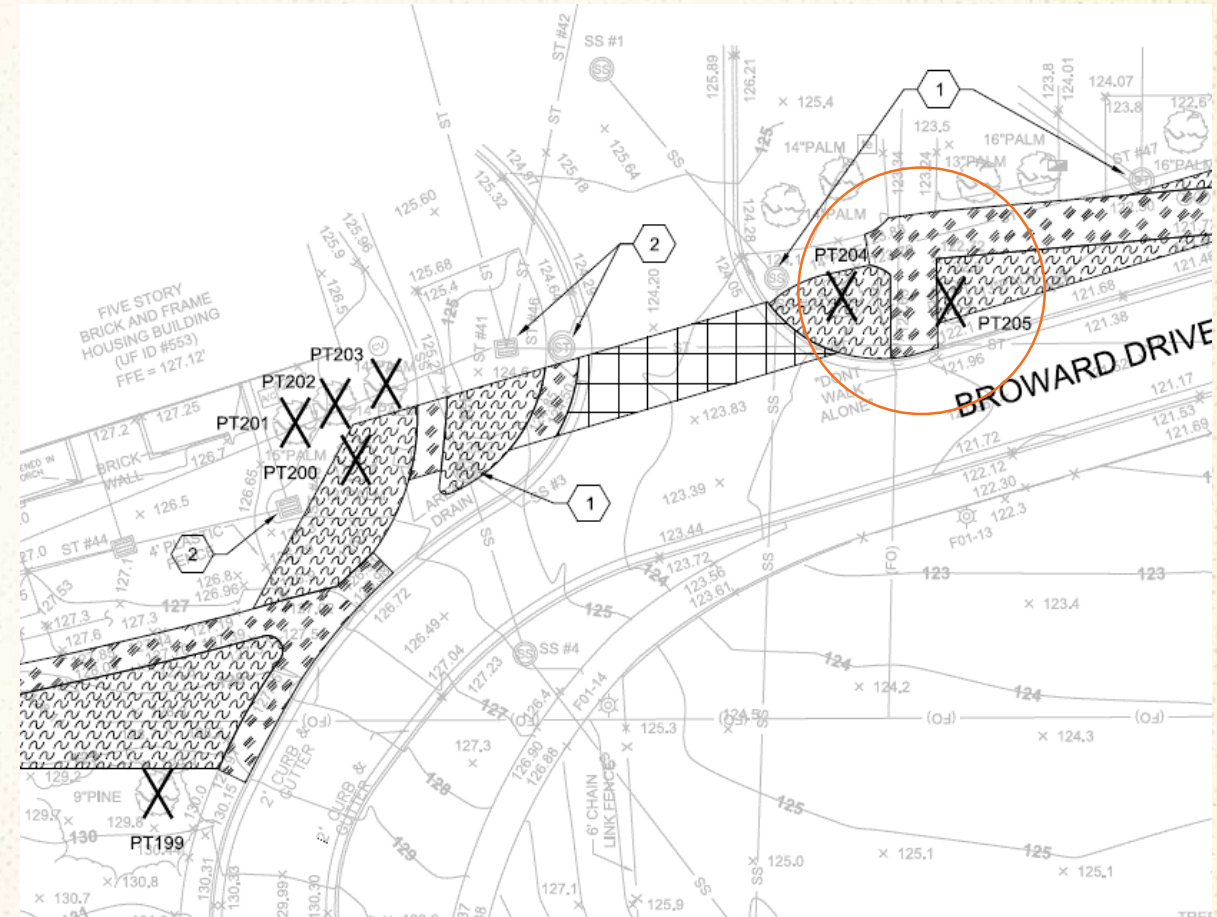
PT200: 13" Palm



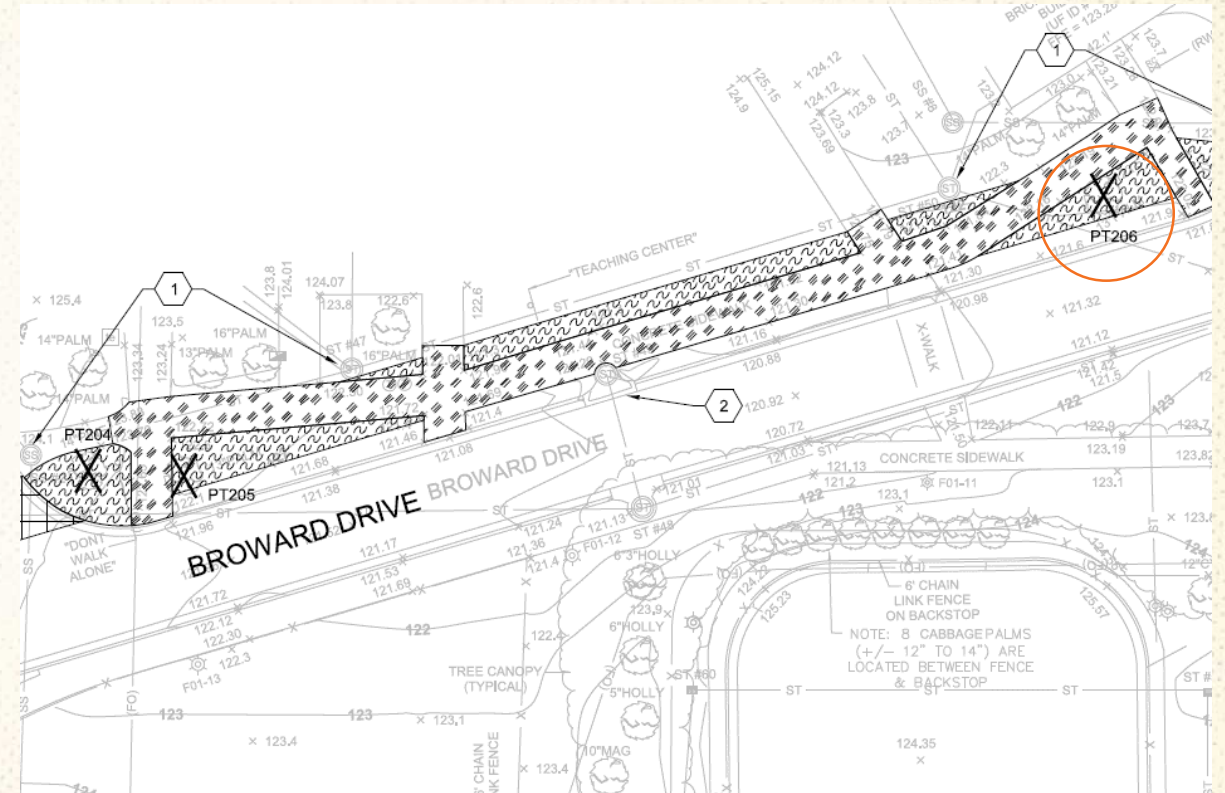
PT202: 14" Palm **PT203: 14" Palm**



PT204: 14" Pine
PT205: 13" Palm



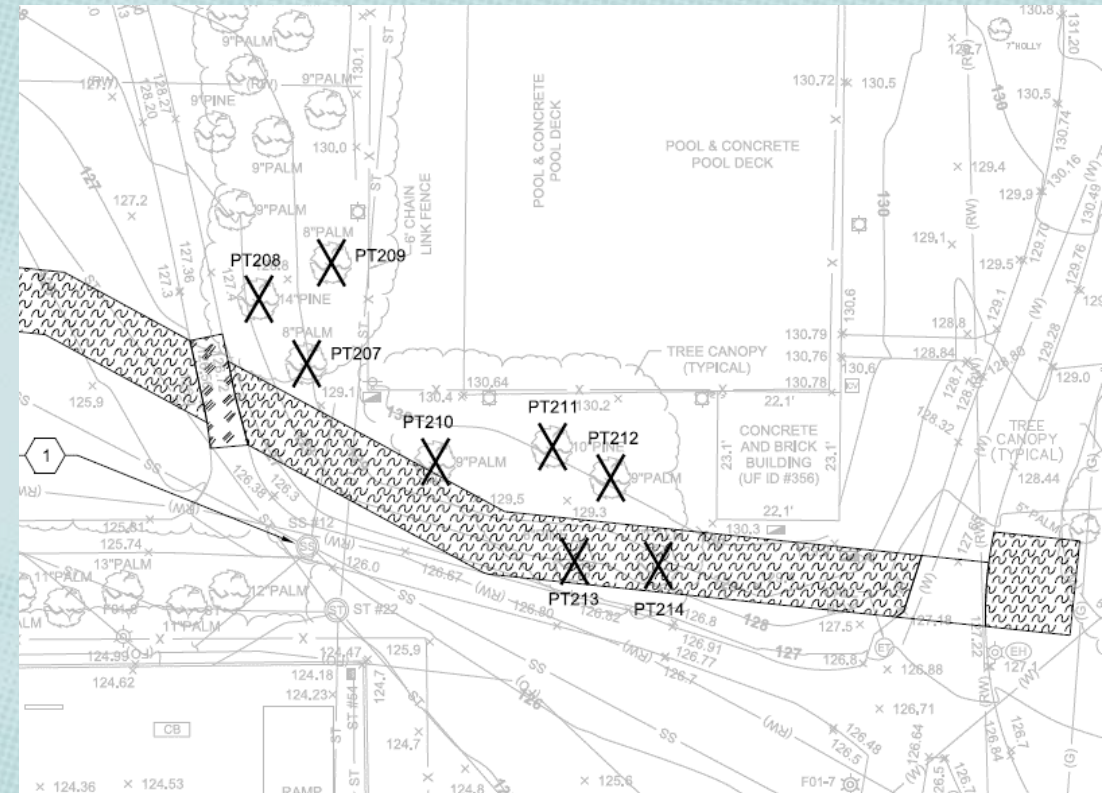
PT206: 13" Palm



UF-654 – Honors Dormitory Residential College

The following trees will be removed by the UF-654 project and will be excluded from project UT00470:

- PT207: 8" Palm
- PT208: 14" Pine
- PT209: 8" Palm
- PT210: 9" Palm
- PT211: 10" Pine
- PT212: 9" Palm
- PT213: 8" Pine
- PT214: 7" Palm



UF-654 Tree Removal



Tree Impact Summary

Species	Size (inches)	Quantity
Palm	13	3
	14	2
	15	1
Pine	14	1

TREE SIZE (DBH)	COST TO RELOCATE EXISTING TREE *	COST TO MITIGATE CANOPY TREES (ratios incorporated)	COST TO MITIGATE Water Oaks, Laurel Oaks, Loblolly Pines, Sugarberry and Sweetgums (ratios incorporated)	COST TO MITIGATE UNDERSTORY TREES (ratios incorporated)**
5-15	\$500	\$500	\$500	\$500

7 known tree impacts – no heritage trees

7*\$500 = \$3,500

Request **\$3,500** paid to tree mitigation fund

Questions?

McCarty Woods Recovery: Update and New Requests



Great Progress
Great Response



October

August



Invasive Piles



October

Hundreds of
pounds removed

September



Before and After



Left: So much privet you could not see into the woods. Right: Volunteers in an edge area with invasives removed

Update/Request:

- Continue monthly work parties to focus on invasive removal
- Increased use
 - McCarty Woods Plant of the Week—twitter Soltis Lab @UF
 - Bird watching (Dec. 19)
 - Plant identification
 - Insect identification
- New Requests
 - Begin to reintroduce native plants lost from the woods
 - Newly designed kiosk signs
 - Permanent signs for trees
 - Improve old trails—make more usable
 - Highly targeted spraying of cats claw
- All work will be done by volunteers

Begin to reintroduce native plants lost from the woods

- First group of reintroductions
 - *Aesculus pavia*
 - *Callicarpa americana*
 - *Cercis canadensis*
 - *Sideroxylon lanuginosum*
 - *Ruellia caroliniensis*
- Obtained locally – our own property, local nurseries
- Planting carefully discussed/planned
 - where a few still occur
 - where recently seen to occur (some disappeared in last 20 years)
 - should occur based on past records/observations
- Request rapid permission so we can plant in winter (Dec./Jan.) to ensure survival
- Volunteers from the FLM will water if needed

The first returnees



Aesculus pavia



Callicarpa americana



Cercis canadensis



Sideroxylon lanuginosum



Ruellia caroliniensis

Chionanthus virginicus
Passiflora lutea
Asimina parviflora
Arisaema triphyllum
Carpinus caroliniana
Ostrya virginica
Carex dasycarpa

New Kiosk Signs

- For now, reprint original signs-use those
 - Mark Hostetler assisting
- Over next year design and print new signs
 - Coordinated across campus, Matt Williams



Permanent signs for trees

- Work with NATL and others to have a similar campus template
- Matt Williams will help coordinate
- Should be done soon so that classes and the public get more out of their visits to the woods



Improve old trails—make them usable

- Old side trails are becoming visible again
 - With a little work we can make them usable again
 - Can make progress by hand
 - Use of weed whacker/target spray
- This would permit easier access to some of the noteworthy trees and more use of the woods



Targeted Spraying

- Cat's claw, *Macfadyena unguis-cati*
 - A major problem
 - Clearing small areas takes days
- Highly targeted effort to small areas
 - Focus on “cat's-claw carpets”-100s of seedlings
 - Side trails (earlier slide)
 - Ron Lange—UF grounds; sprays on campus; herbarium volunteer...knows plants and spraying

