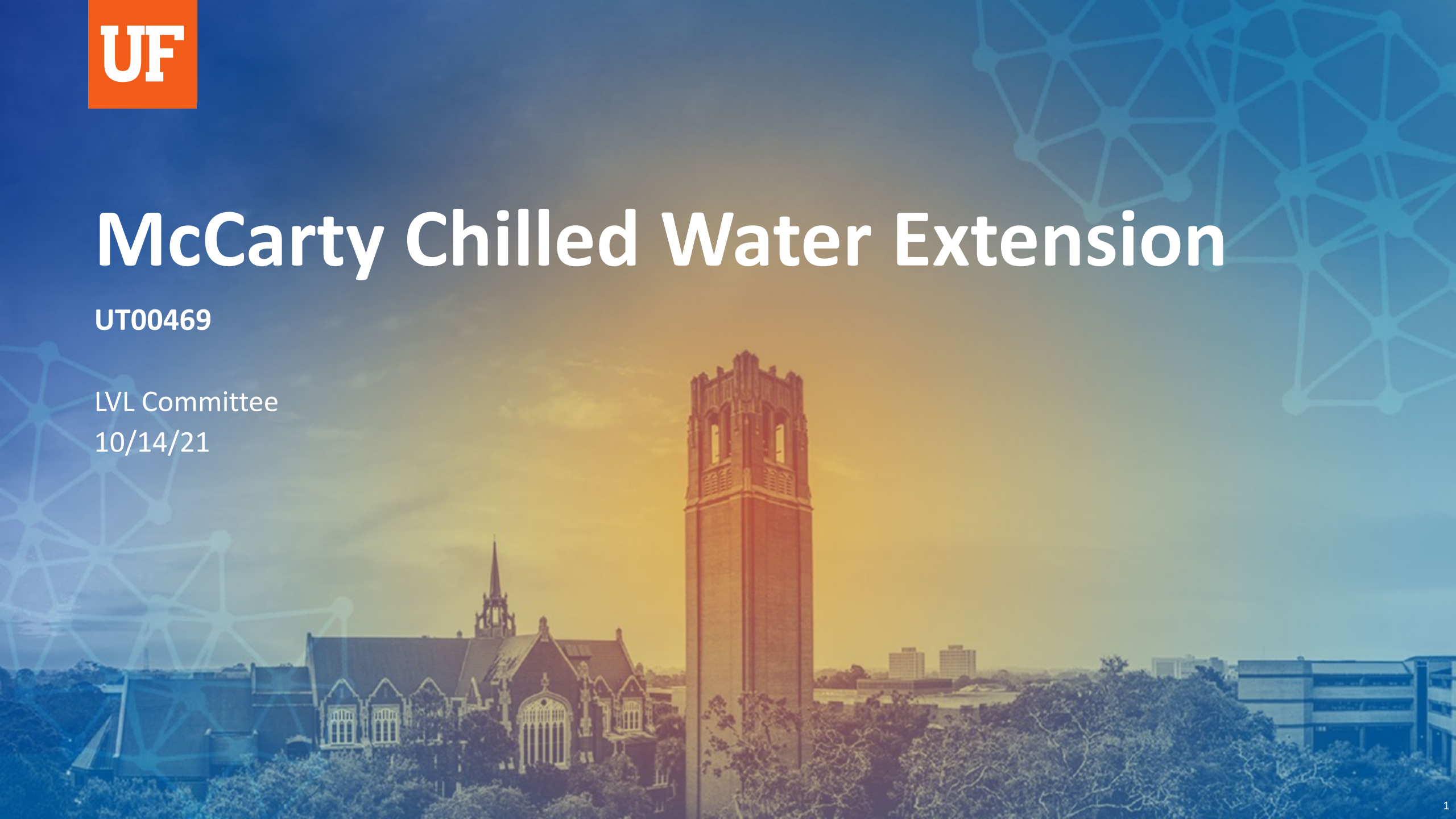


# McCarty Chilled Water Extension

UT00469

LVL Committee

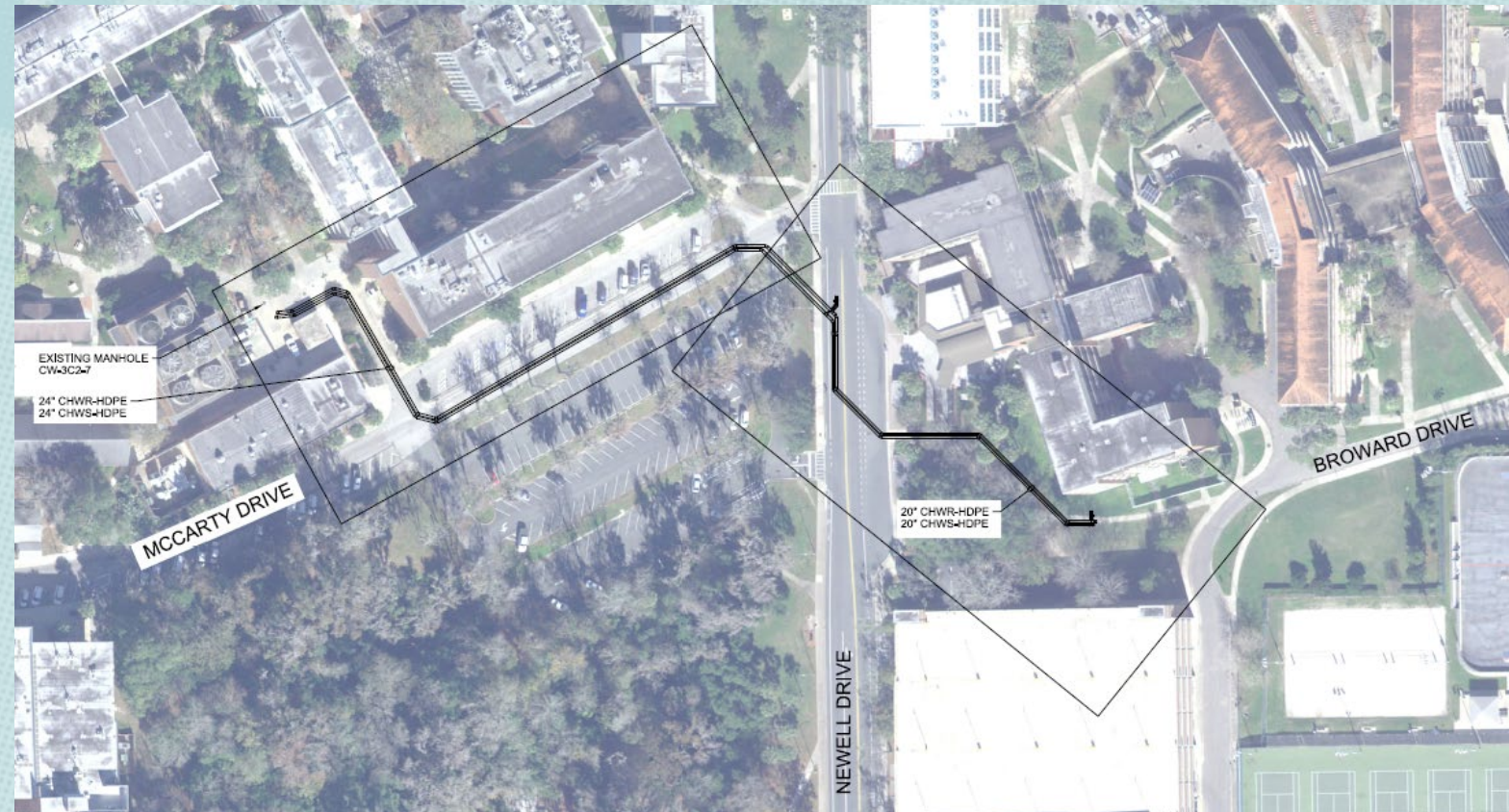
10/14/21





## Project objective

- This connection will provide chilled water for future buildings, specifically the future Gator Residential Complex (UF-654) and future UF/IFAS Natural Resources Building.
- Based on the results of the UF-623 Phase 3 Planning Study Jacobs recommends a new chilled water line to connect the McCarty Chilled Water Plant and existing manhole CW-3C2-9 with an extension to the existing lines south of Rinker Hall



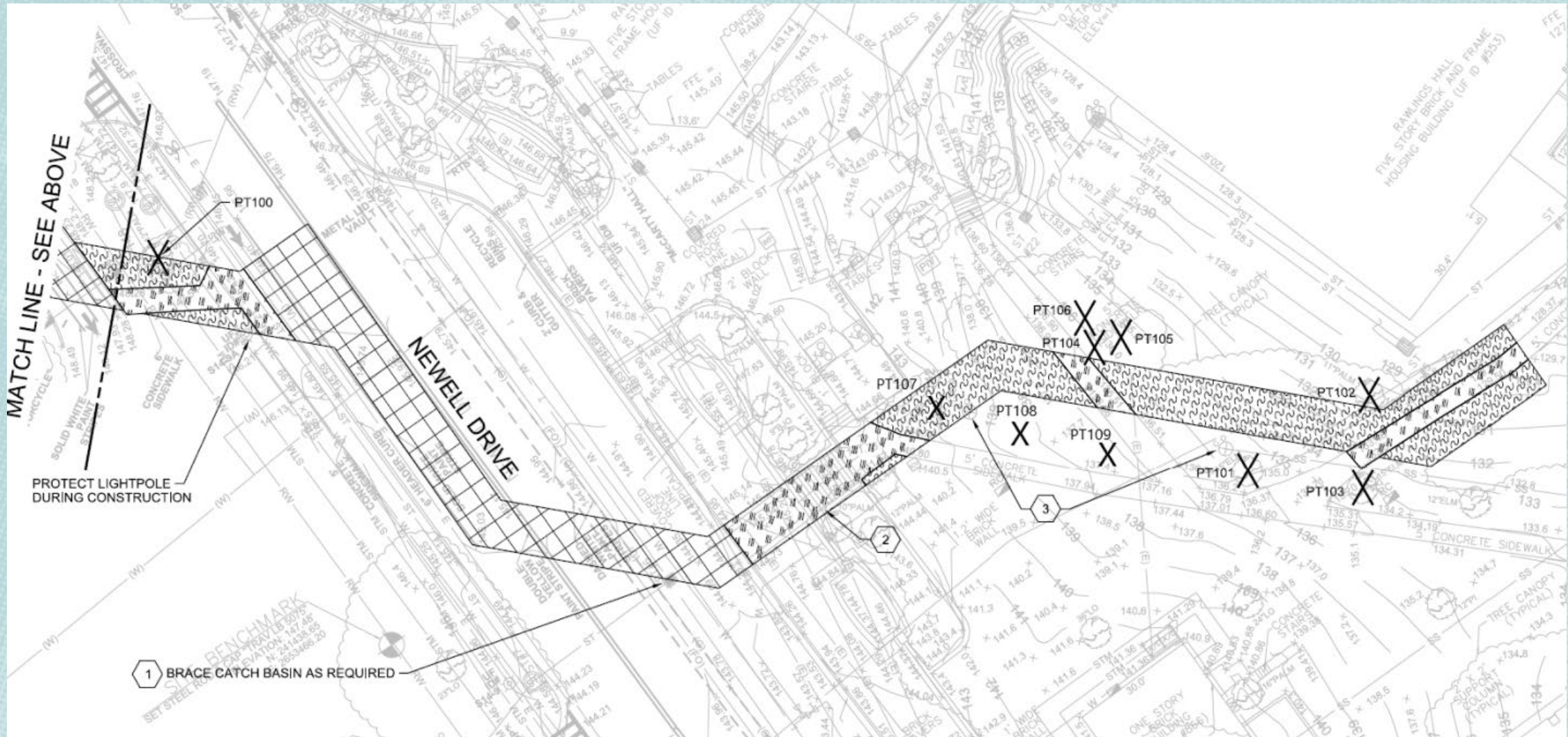


## Project site overview



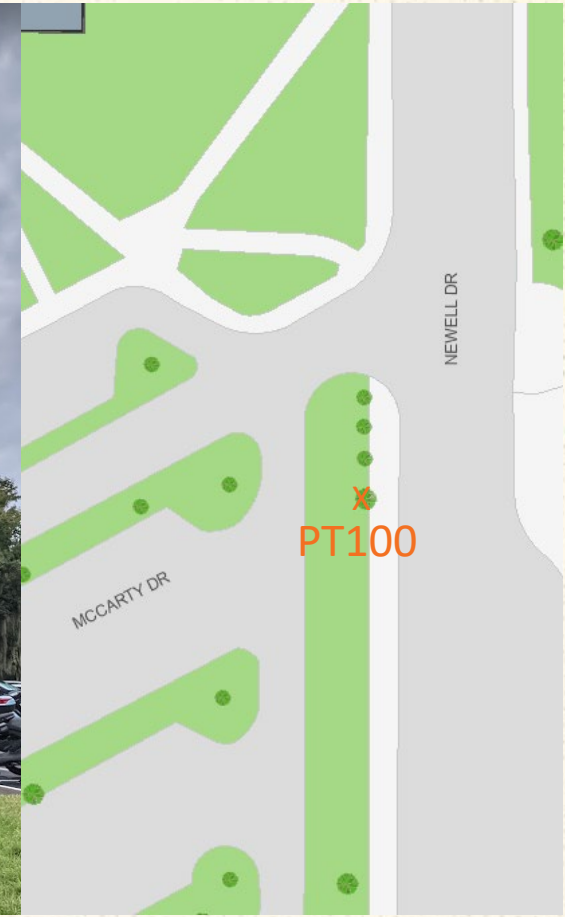


## Tree impact overview



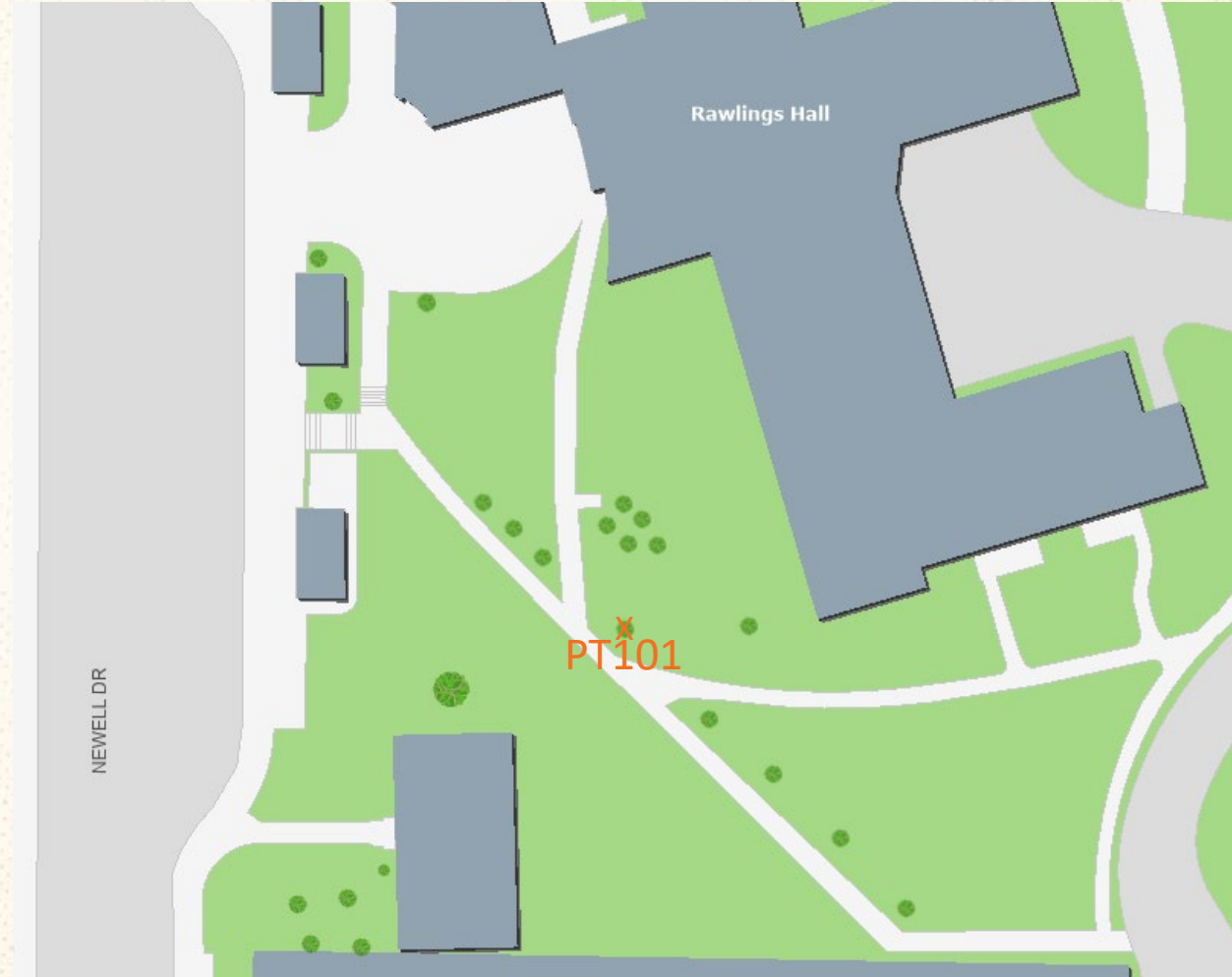


## PT100: 12" Palm





## PT101: 15" Elm





## PT102: 11" Palm





## PT103: 15" Elm





PT104: 12" Palm

PT105: 14" Palm

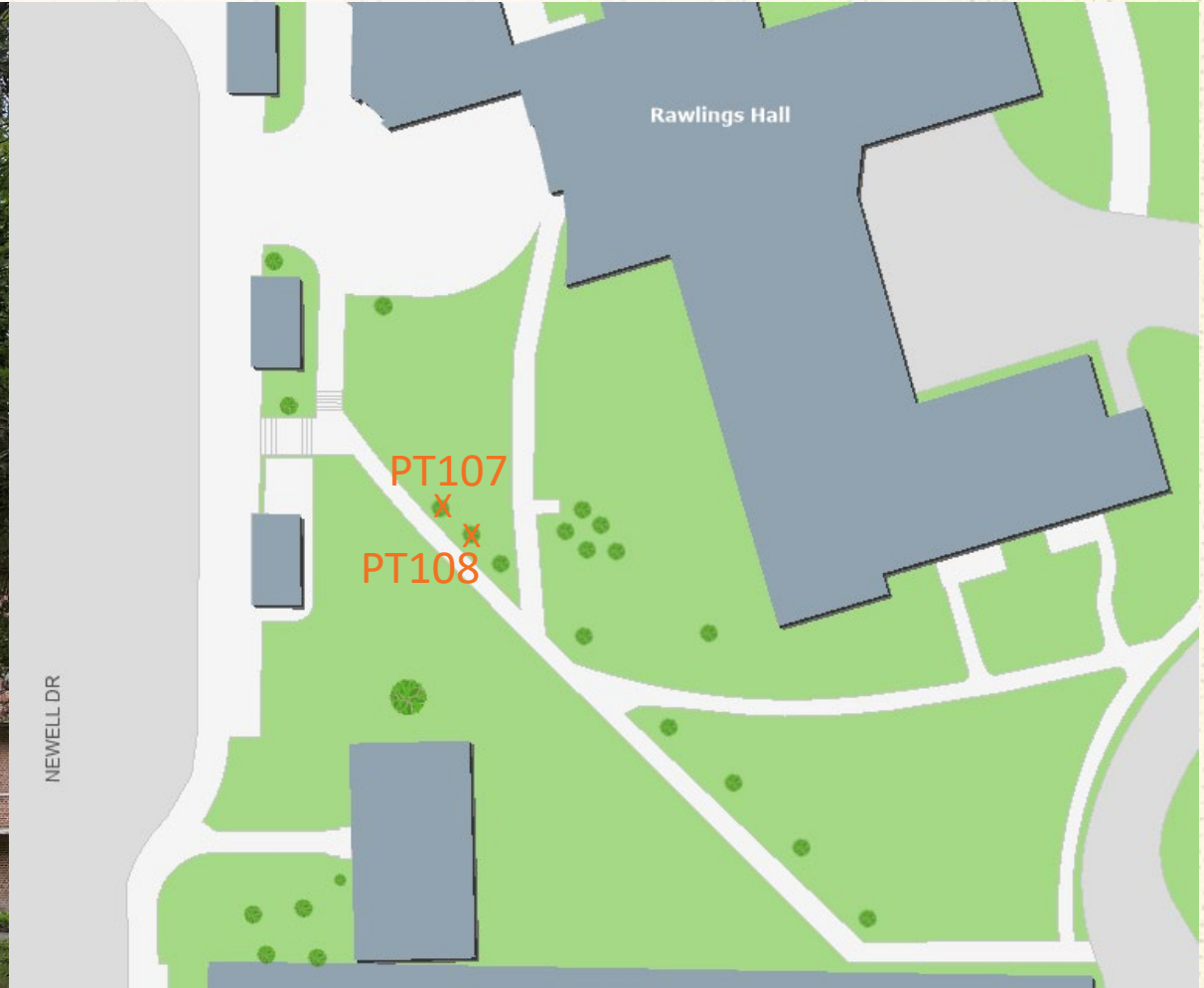
PT106: 12" Palm





PT107: 15" Elm

PT108: 13" Elm





## PT109: 13" Elm

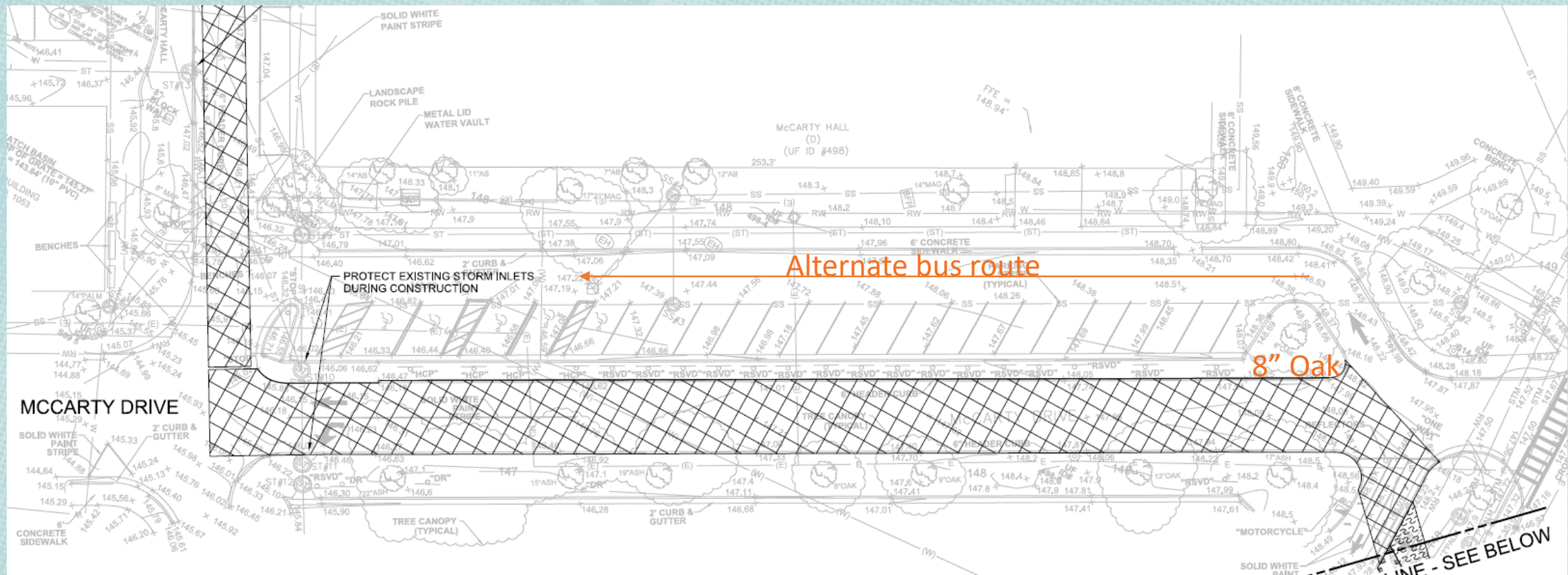




## Possible additional tree impact

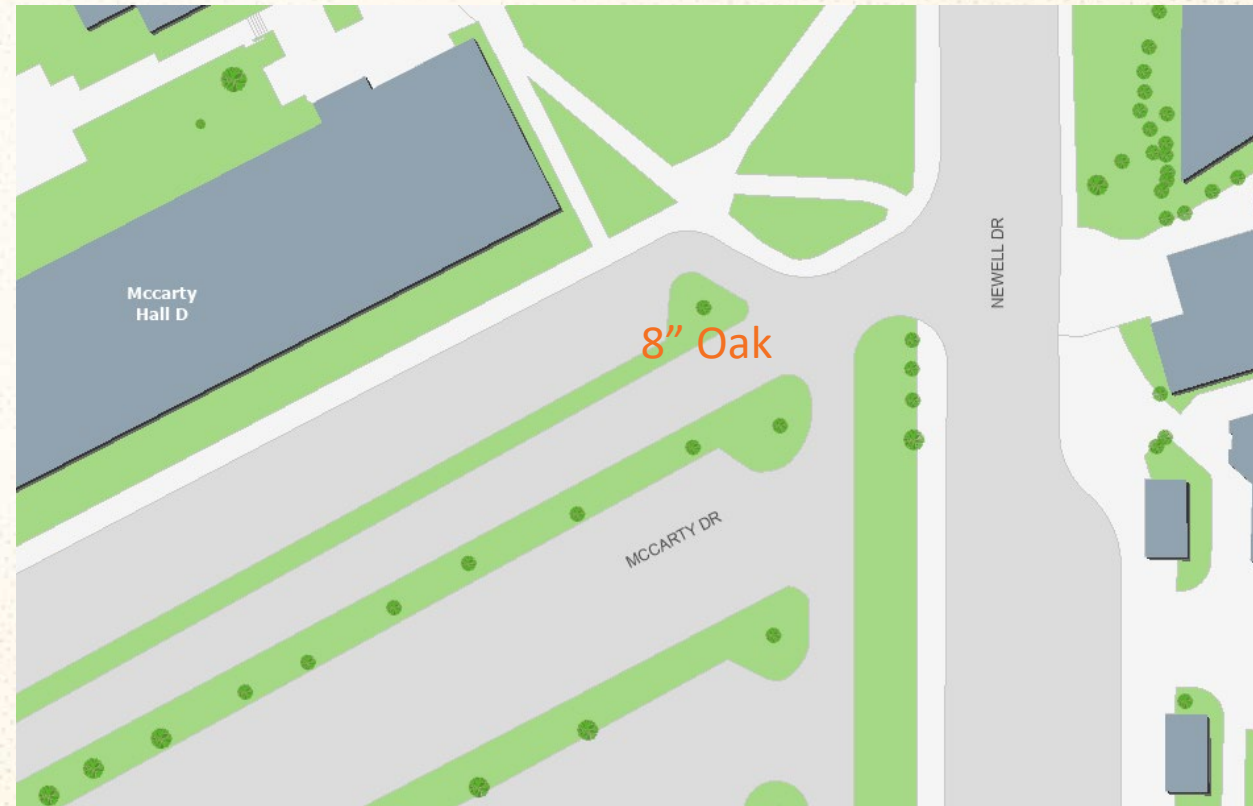
The reserved parking lot north of McCarty Drive will be considered as an alternate route to maintain bus routes and emergency vehicle access during construction.

The 8" Oak tree on the eastern entrance to the parking lot may need to be removed to maintain an adequate turn radius for buses.





## Possible tree impact: 8" Oak





## Tree Impact Summary

10 known tree impacts – no heritage trees

Species	Size (inches)	Quantity
Palm	11	1
	12	3
	14	1
Elm	13	2
	15	3
Oak*	8	1

\*possible tree impact



Questions?



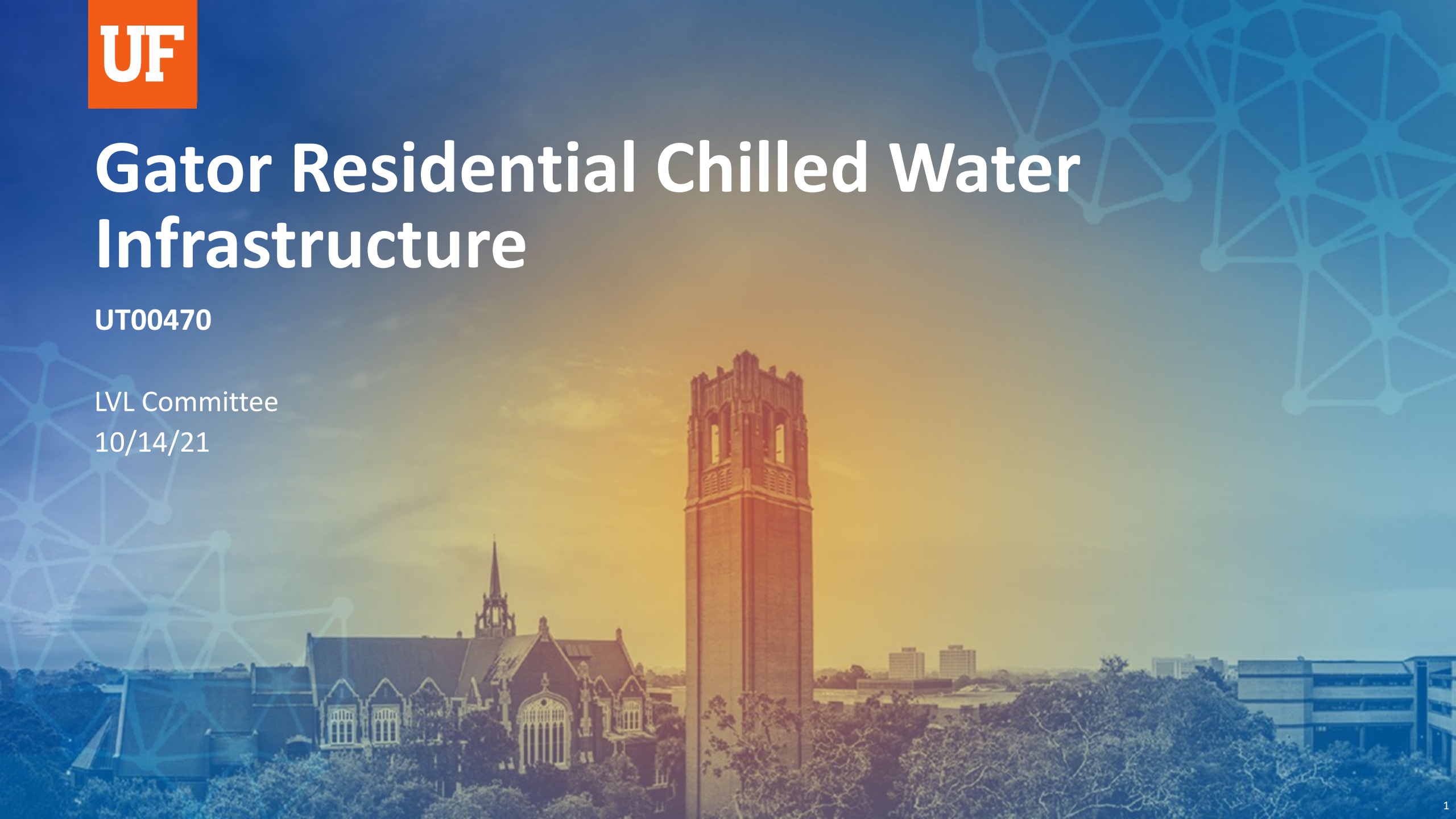
The logo of the University of Florida, consisting of the letters 'UF' in white on an orange square background.

UF

# Gator Residential Chilled Water Infrastructure

UT00470

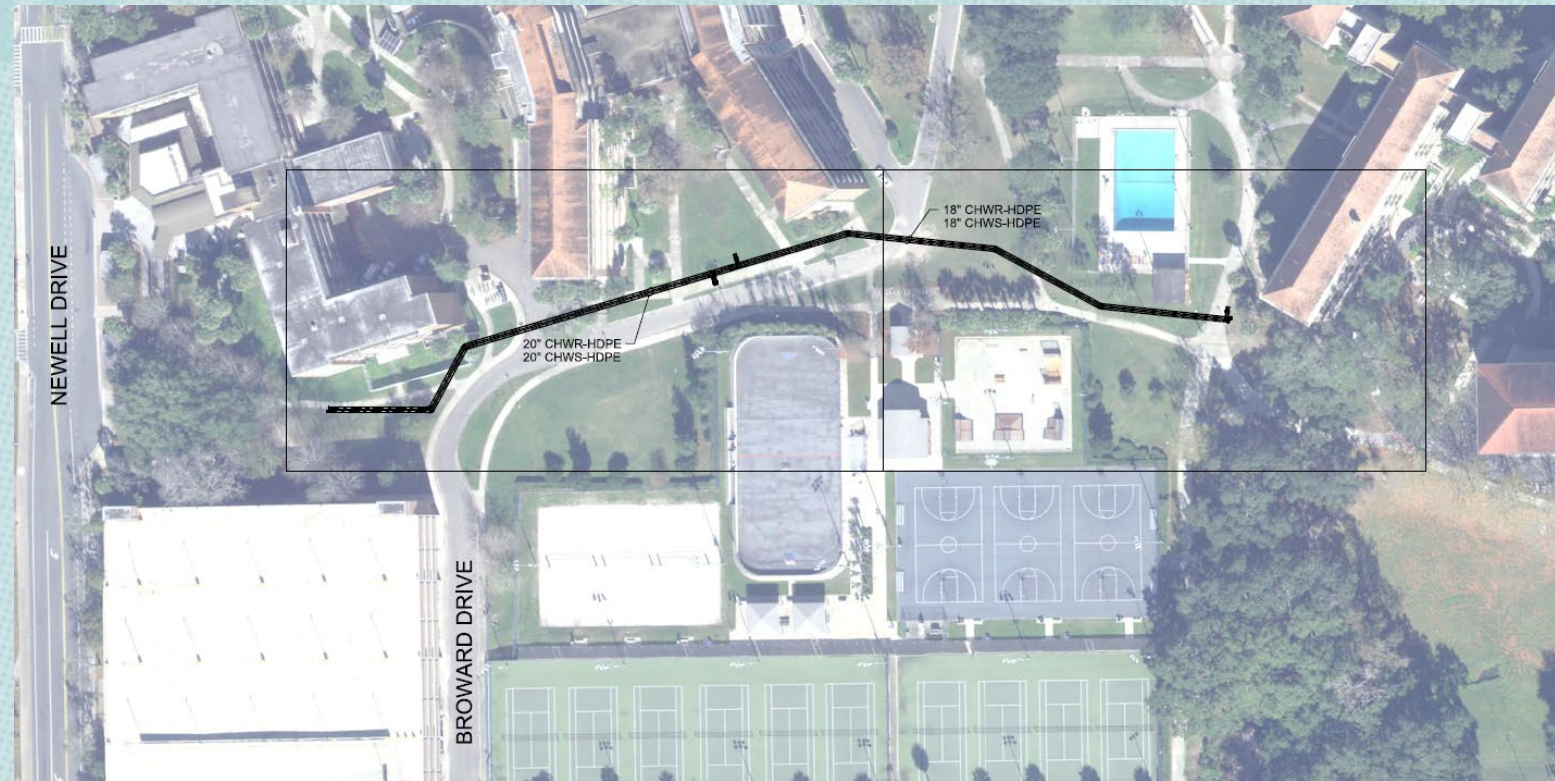
LVL Committee  
10/14/21





## Project objective

- Will complete a critical connection to reduce distribution restrictions and increase service reliability of the North Campus system.
- Tees with direct buried valves will be installed for connections to the future buildings at the Rawlings Hall and Broward Hall.
- Based on the results of the UF-623 Phase 3 Planning Study Jacobs recommends a new chilled water line to connect the McCarty Chilled Water Plant and existing manhole CW-3C2-9 with an extension to the existing lines south of Rinker Hall.





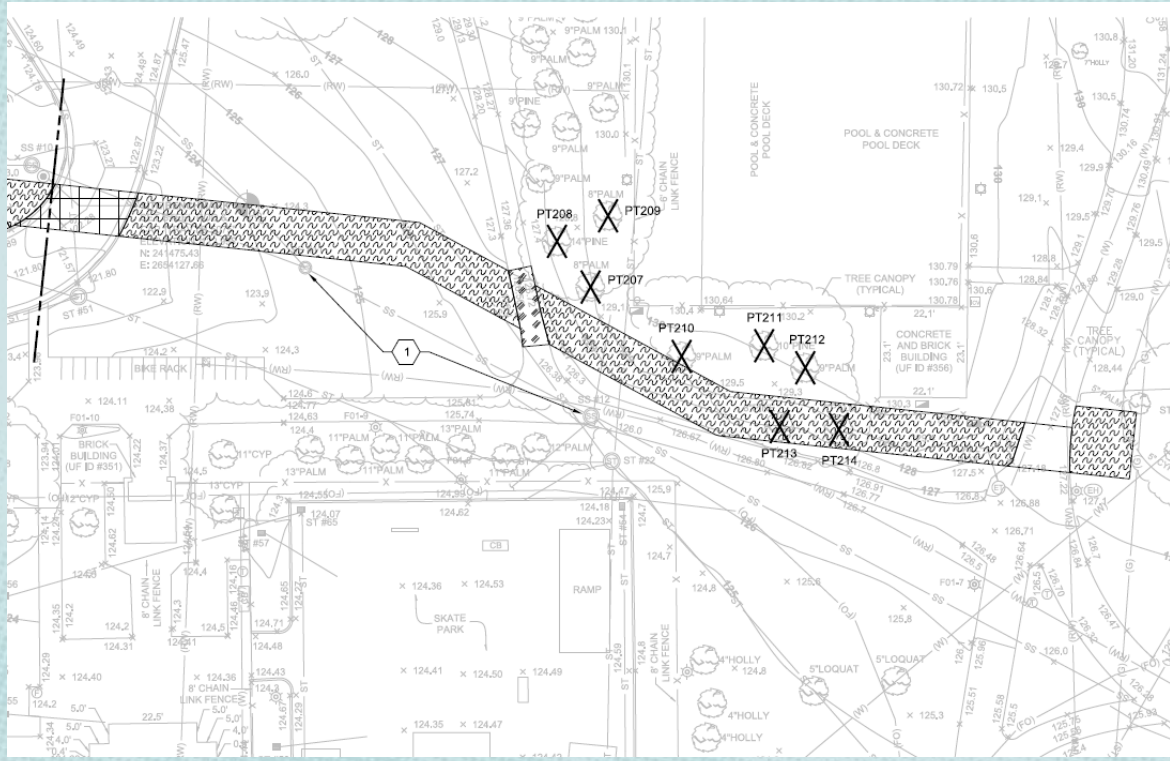
## Project site overview





The site plan illustrates the proposed improvements for the Broward Drive project. Key features include:

- Property Boundaries and Easements:** Labeled points PT199, PT200, PT201, PT202, PT203, PT204, PT205, and PT206 are marked along the project boundary.
- Existing Structures:** A five-story brick and frame housing building is shown on the left side of the plan.
- Proposed Improvements:**
  - 6' Chain Link Fence:** Indicated by a dashed line with cross-ticks.
  - Concrete Sidewalk:** Shown as a solid line with a cross-hatch pattern.
  - Tree Canopy (Typical):** Represented by a circular pattern with a cross.
  - Aluminum Bleachers:** Located near the bottom right of the plan.
- Other Features:**
  - ST #1, ST #2, ST #3, ST #4, ST #5, ST #6, ST #7, ST #8, ST #9, ST #10, ST #11, ST #12, ST #13, ST #14, ST #15, ST #16, ST #17, ST #18, ST #19, ST #20, ST #21, ST #22, ST #23, ST #24, ST #25, ST #26, ST #27, ST #28, ST #29, ST #30, ST #31, ST #32, ST #33, ST #34, ST #35, ST #36, ST #37, ST #38, ST #39, ST #40, ST #41, ST #42, ST #43, ST #44, ST #45, ST #46, ST #47, ST #48, ST #49, ST #50, ST #51, ST #52, ST #53, ST #54, ST #55, ST #56, ST #57, ST #58, ST #59, ST #60, ST #61, ST #62, ST #63, ST #64, ST #65, ST #66, ST #67, ST #68, ST #69, ST #70, ST #71, ST #72, ST #73, ST #74, ST #75, ST #76, ST #77, ST #78, ST #79, ST #80, ST #81, ST #82, ST #83, ST #84, ST #85, ST #86, ST #87, ST #88, ST #89, ST #90, ST #91, ST #92, ST #93, ST #94, ST #95, ST #96, ST #97, ST #98, ST #99, ST #100, ST #101, ST #102, ST #103, ST #104, ST #105, ST #106, ST #107, ST #108, ST #109, ST #110, ST #111, ST #112, ST #113, ST #114, ST #115, ST #116, ST #117, ST #118, ST #119, ST #120, ST #121, ST #122, ST #123, ST #124, ST #125, ST #126, ST #127, ST #128, ST #129, ST #130, ST #131, ST #132, ST #133, ST #134, ST #135, ST #136, ST #137, ST #138, ST #139, ST #140, ST #141, ST #142, ST #143, ST #144, ST #145, ST #146, ST #147, ST #148, ST #149, ST #150, ST #151, ST #152, ST #153, ST #154, ST #155, ST #156, ST #157, ST #158, ST #159, ST #160, ST #161, ST #162, ST #163, ST #164, ST #165, ST #166, ST #167, ST #168, ST #169, ST #170, ST #171, ST #172, ST #173, ST #174, ST #175, ST #176, ST #177, ST #178, ST #179, ST #180, ST #181, ST #182, ST #183, ST #184, ST #185, ST #186, ST #187, ST #188, ST #189, ST #190, ST #191, ST #192, ST #193, ST #194, ST #195, ST #196, ST #197, ST #198, ST #199, ST #200, ST #201, ST #202, ST #203, ST #204, ST #205, ST #206, ST #207, ST #208, ST #209, ST #210, ST #211, ST #212, ST #213, ST #214, ST #215, ST #216, ST #217, ST #218, ST #219, ST #220, ST #221, ST #222, ST #223, ST #224, ST #225, ST #226, ST #227, ST #228, ST #229, ST #230, ST #231, ST #232, ST #233, ST #234, ST #235, ST #236, ST #237, ST #238, ST #239, ST #240, ST #241, ST #242, ST #243, ST #244, ST #245, ST #246, ST #247, ST #248, ST #249, ST #250, ST #251, ST #252, ST #253, ST #254, ST #255, ST #256, ST #257, ST #258, ST #259, ST #260, ST #261, ST #262, ST #263, ST #264, ST #265, ST #266, ST #267, ST #268, ST #269, ST #270, ST #271, ST #272, ST #273, ST #274, ST #275, ST #276, ST #277, ST #278, ST #279, ST #280, ST #281, ST #282, ST #283, ST #284, ST #285, ST #286, ST #287, ST #288, ST #289, ST #290, ST #291, ST #292, ST #293, ST #294, ST #295, ST #296, ST #297, ST #298, ST #299, ST #300, ST #301, ST #302, ST #303, ST #304, ST #305, ST #306, ST #307, ST #308, ST #309, ST #310, ST #311, ST #312, ST #313, ST #314, ST #315, ST #316, ST #317, ST #318, ST #319, ST #320, ST #321, ST #322, ST #323, ST #324, ST #325, ST #326, ST #327, ST #328, ST #329, ST #330, ST #331, ST #332, ST #333, ST #334, ST #335, ST #336, ST #337, ST #338, ST #339, ST #340, ST #341, ST #342, ST #343, ST #344, ST #345, ST #346, ST #347, ST #348, ST #349, ST #350, ST #351, ST #352, ST #353, ST #354, ST #355, ST #356, ST #357, ST #358, ST #359, ST #360, ST #361, ST #362, ST #363, ST #364, ST #365, ST #366, ST #367, ST #368, ST #369, ST #370, ST #371, ST #372, ST #373, ST #374, ST #375, ST #376, ST #377, ST #378, ST #379, ST #380, ST #381, ST #382, ST #383, ST #384, ST #385, ST #386, ST #387, ST #388, ST #389, ST #390, ST #391, ST #392, ST #393, ST #394, ST #395, ST #396, ST #397, ST #398, ST #399, ST #400, ST #401, ST #402, ST #403, ST #404, ST #405, ST #406, ST #407, ST #408, ST #409, ST #410, ST #411, ST #412, ST #413, ST #414, ST #415, ST #416, ST #417, ST #418, ST #419, ST #420, ST #421, ST #422, ST #423, ST #424, ST #425, ST #426, ST #427, ST #428, ST #429, ST #430, ST #431, ST #432, ST #433, ST #434, ST #435, ST #436, ST #437, ST #438, ST #439, ST #440, ST #441, ST #442, ST #443, ST #444, ST #445, ST #446, ST #447, ST #448, ST #449, ST #450, ST #451, ST #452, ST #453, ST #454, ST #455, ST #456, ST #457, ST #458, ST #459, ST #460, ST #461, ST #462, ST #463, ST #464, ST #465, ST #466, ST #467, ST #468, ST #469, ST #470, ST #471, ST #472, ST #473, ST #474, ST #475, ST #476, ST #477, ST #478, ST #479, ST #480, ST #481, ST #482, ST #483, ST #484, ST #485, ST #486, ST #487, ST #488, ST #489, ST #490, ST #491, ST #492, ST #493, ST #494, ST #495, ST #496, ST #497, ST #498, ST #499, ST #500, ST #501, ST #502, ST #503, ST #504, ST #505, ST #506, ST #507, ST #508, ST #509, ST #510, ST #511, ST #512, ST #513, ST #514, ST #515, ST #516, ST #517, ST #518, ST #519, ST #520, ST #521, ST #522, ST #523, ST #524, ST #525, ST #526, ST #527, ST #528, ST #529, ST #530, ST #531, ST #532, ST #533, ST #534, ST #535, ST #536, ST #537, ST #538, ST #539, ST #540, ST #541, ST #542, ST #543, ST #544, ST #545, ST #546, ST #547, ST #548, ST #549, ST #550, ST #551, ST #552, ST #553, ST #554, ST #555, ST #556, ST #557, ST #558, ST #559, ST #560, ST #561, ST #562, ST #563, ST #564, ST #565, ST #566, ST #567, ST #568, ST #569, ST #570, ST #571, ST #572, ST #573, ST #574, ST #575, ST #576, ST #577, ST #578, ST #579, ST #580, ST #581, ST #582, ST #583, ST #584, ST #585, ST #586, ST #587, ST #588, ST #589, ST #590, ST #591, ST #592, ST #593, ST #594, ST #595, ST #596, ST #597, ST #598, ST #599, ST #600, ST #601, ST #602, ST #603, ST #604, ST #605, ST #606, ST #607, ST #608, ST #609, ST #610, ST #611, ST #612, ST #613, ST #614, ST #615, ST #616, ST #617, ST #618, ST #619, ST #620, ST #621, ST #622, ST #623, ST #624, ST #625, ST #626, ST #627, ST #628, ST #629, ST #630, ST #631, ST #632, ST #633, ST #634, ST #635, ST #636, ST**





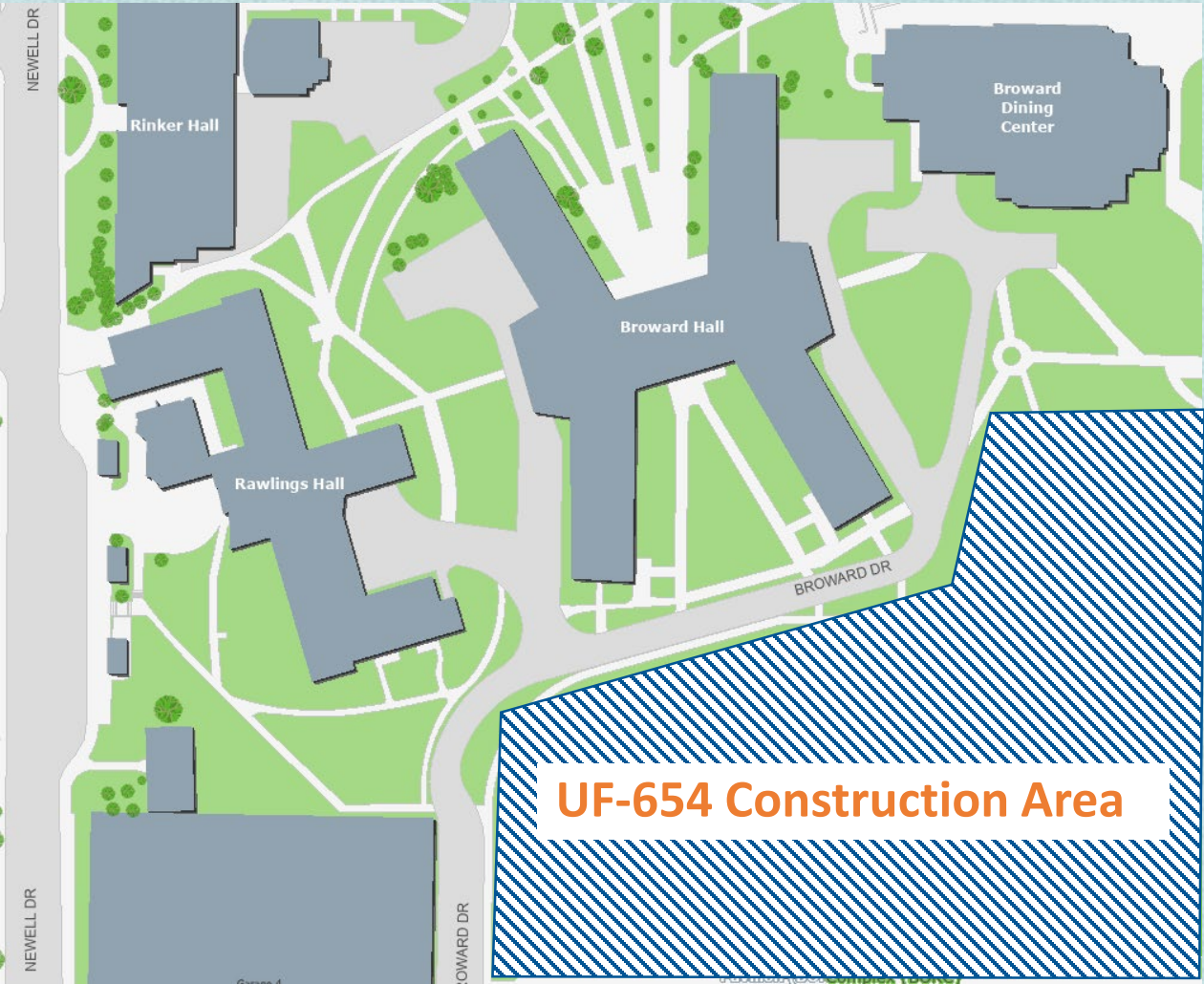
Broward Drive

Key Considerations:

- Emergency vehicle access/fire lane
- Service vehicle access
- Garbage pick-up for Rawlings, Broward, and Broward Dining Center
- Food deliveries via full-size tractor trailers to Broward Dining Center. Numerous deliveries per day.

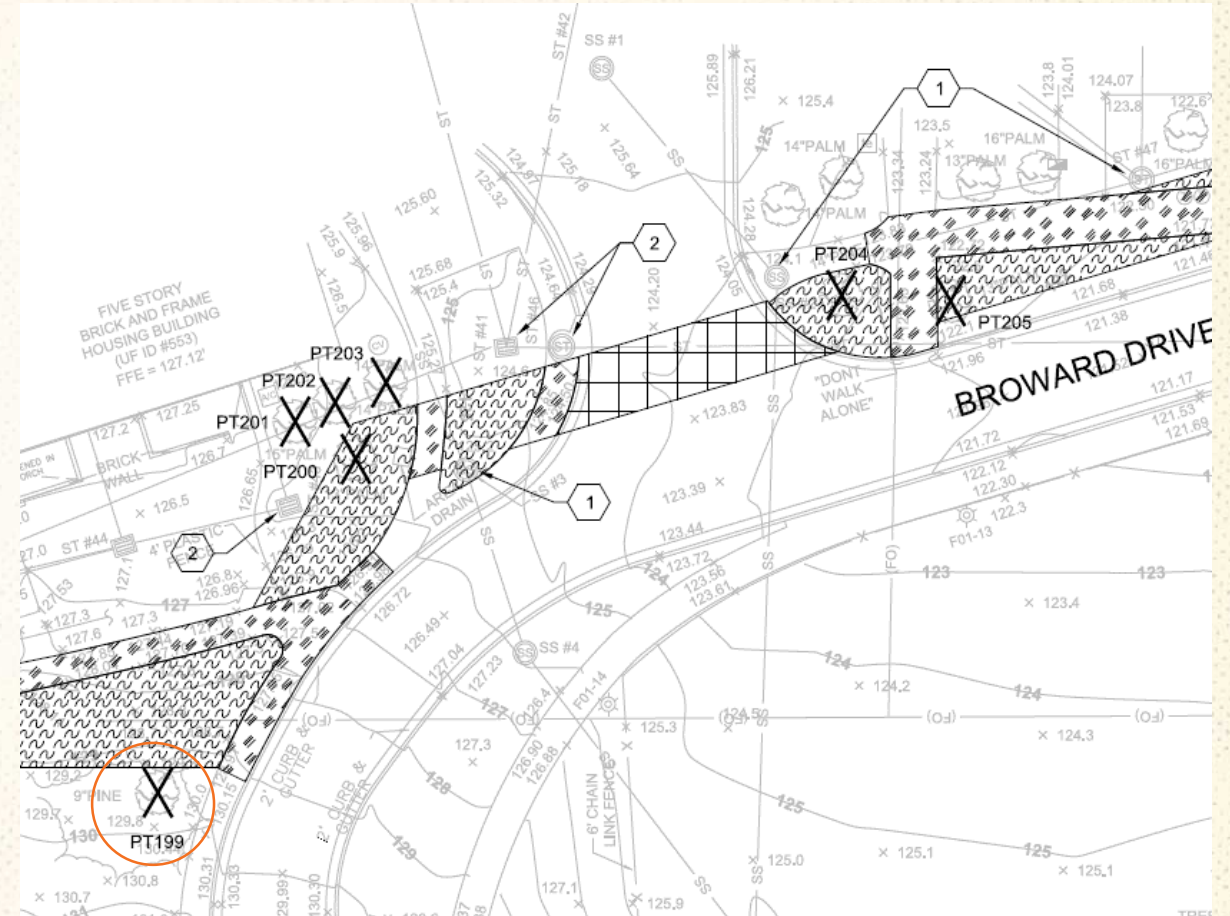
Alternative to close Broward Drive:  
Route chilled water along Broward Drive and coordinate vehicle access through the active UF-654 construction site (if possible). This is recognized but **not** recommended.

Pros	Cons
Less tree impacts	Fire lane closed
Sidewalks and southern pedestrian building entrances to remain open	Constant coordination to maintain a vehicle route through UF-654 site
	Relocate trash pick-up





## PT199: 9" Pine



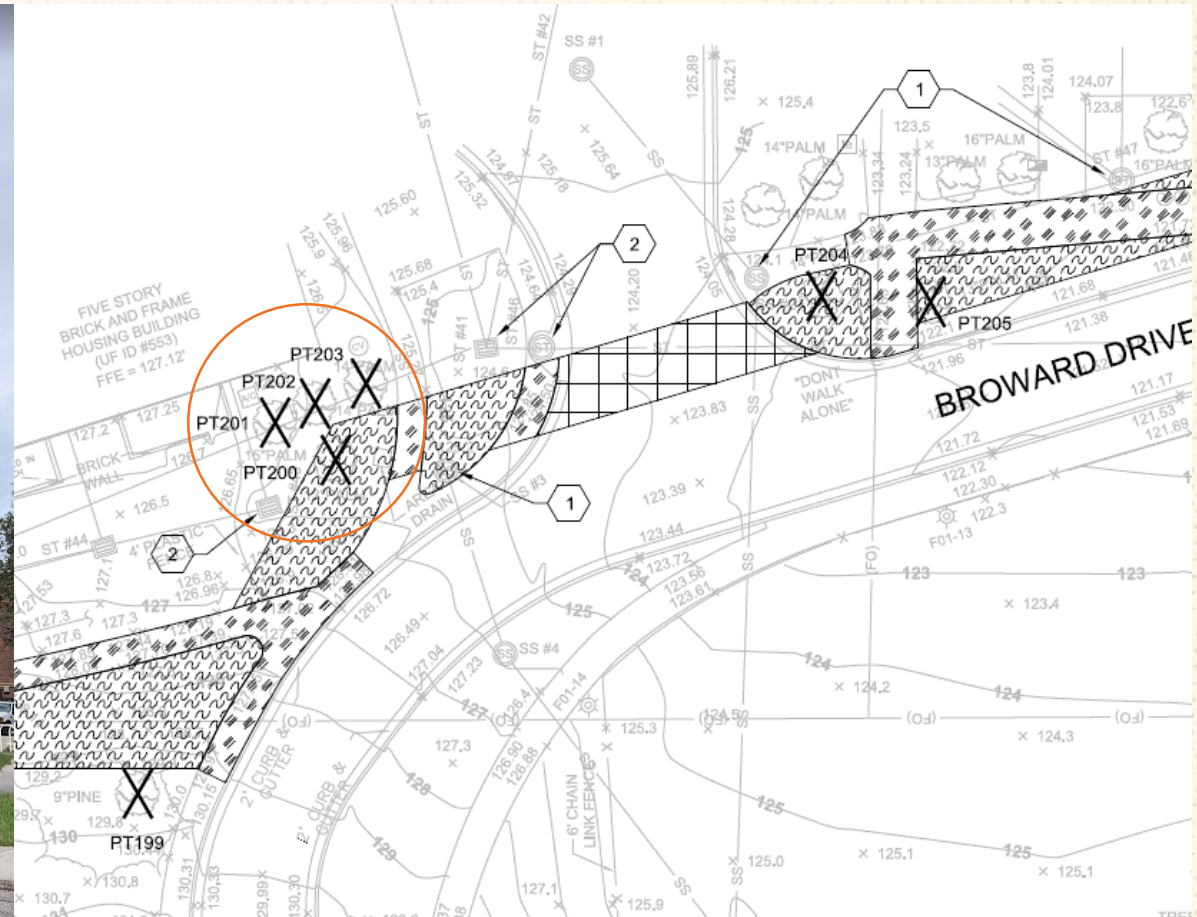


PT200: 13" Palm

PT202: 14" Palm

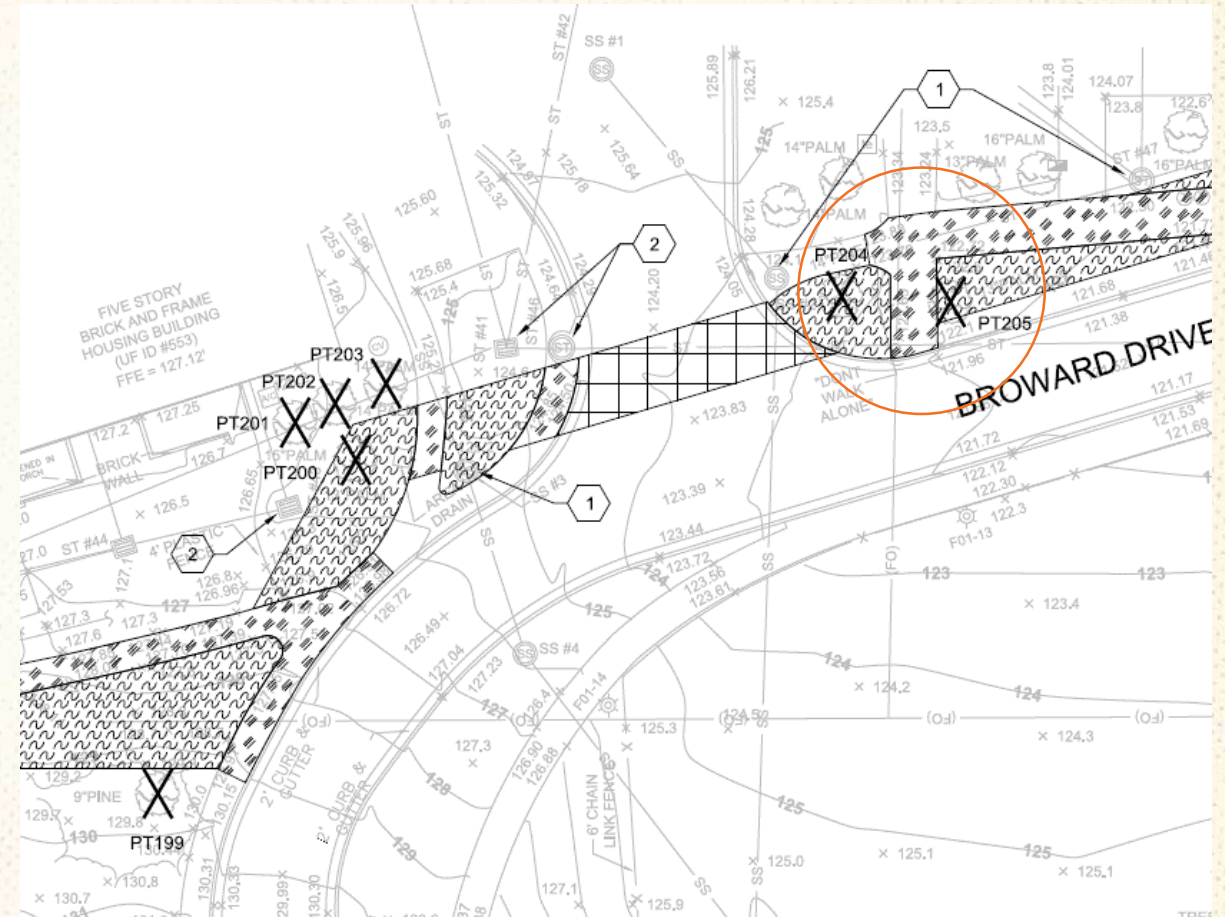
PT201: 15" Palm

PT203: 14" Palm



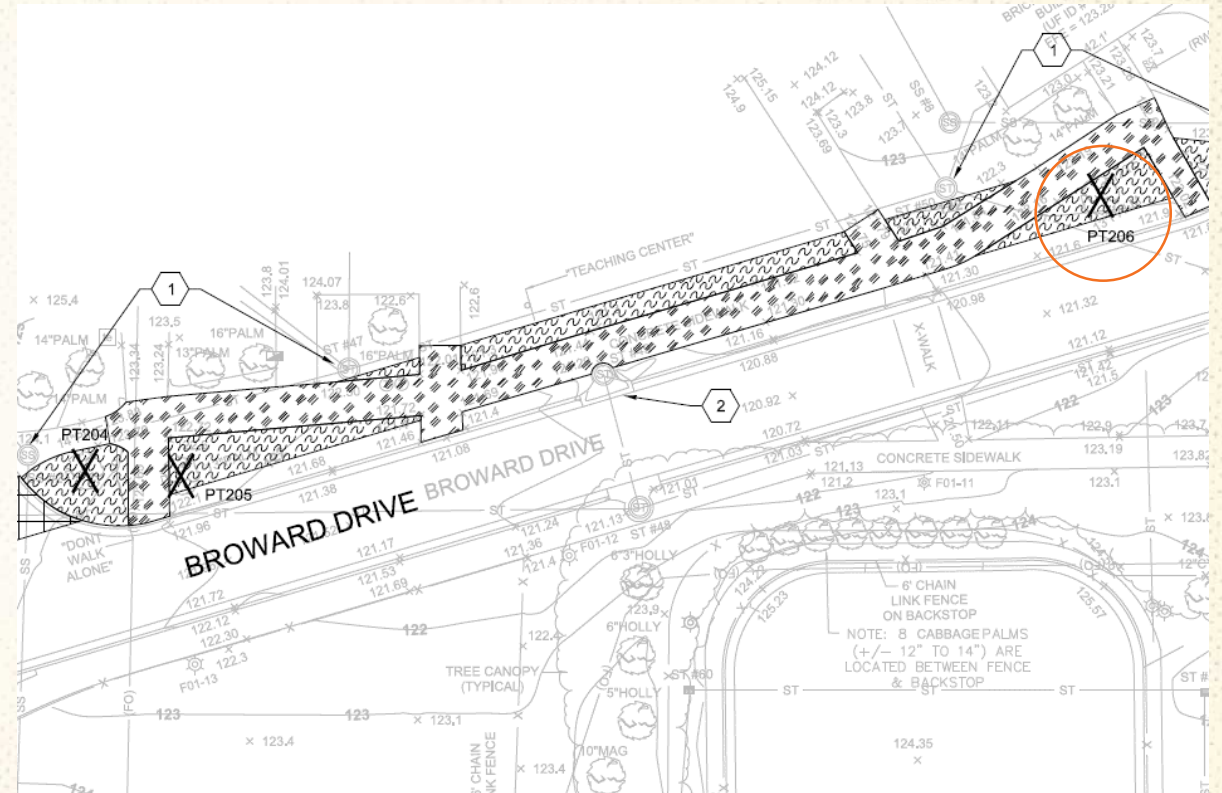


PT204: 14" Pine  
PT205: 13" Palm





## PT206: 13" Palm





## LVL Committee Minutes

June 11, 2020

## UF-654 – Honors Dormitory Residential College

Duplicate tree impacts across projects UT00470 and UF-654

### UF-654 – Honors Dormitory Residential College

Geoffrey Higgins

Geoffrey introduced himself and began by stating he was before the committee seeking Programming and site selection approval. He discussed the location, schedule, and description of the project. He stated the location would be at the Broward Recreational area. This project will happen in two phases. The first phase will be demolishing the existing recreational area and they may also include the pool area because of the utilities going in but the design team is trying to leave the pool area alone. The second phase will be construction. The committee asked about the palms and if they will be relocated or replanted. Frank Javaheri stated, if possible, they would be relocating them.

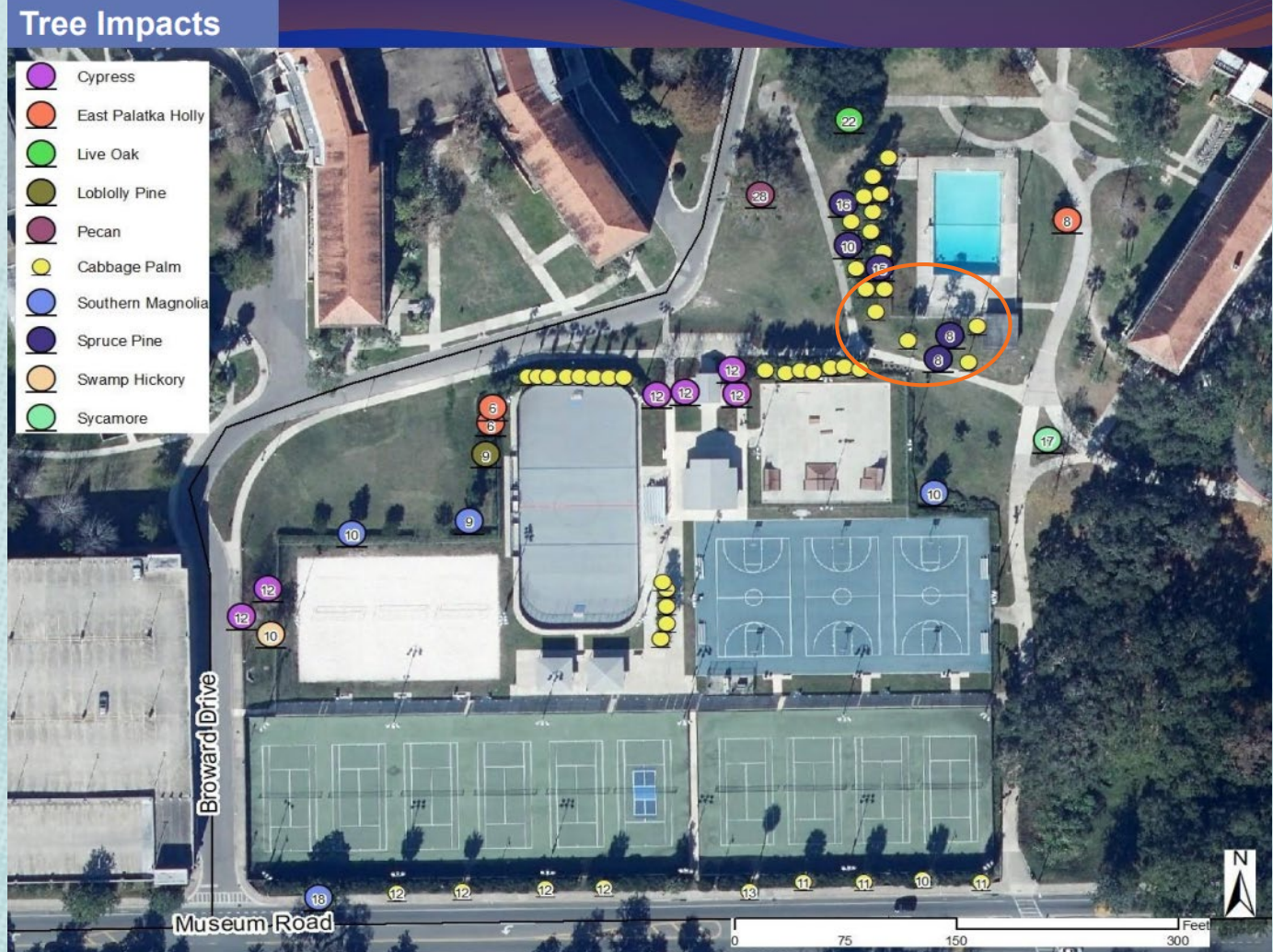
Geoffrey showed the renderings of what the buildings might look like. It will be a 5 to 6 story building. There will be 910 double bedrooms, 438 single suites and 17 ADS suites. This will make a total of 1400 beds for the Honors College. There are 3200 honors students and only a 1000 is housed currently. The new building should be able to house the rest of the honors students. There will be 700 first years, 350 sophomores, 350 juniors that make the total 1400. Geoffrey stated that the building design team would scale down the building close to the Yulee pit. It will not look like that. It will be reconfigured to not impact the pit, green space, and walkways. They will rework the areas crosswalks to continue those for the pedestrian walkways. Committee members expressed concern about losing the recreational space. Linda Dixon stated that a new recreational center was being proposed where Rawlings Hall currently sits but, noted that the project is not currently funded. The plan was to create a neighborhood with the housing buildings and the dining halls.

Geoffrey went over the tree survey and said that the design team would be saving the Heritage Pecan tree and Live Oak trees. The only trees along Museum Road that will be impacted are for chilled water and utility hookup. The committee suggested that the pool be saved and to create a gathering place for the students. This area could be reconfigured for use for programs and other student events. The committee asked the design team to look at the crosswalks from Museum Road up through the housing halls, by the pool and through to the dining halls. Geoffrey said that they will be working with Grounds to relocate the palms. Adam Dale asked protect the Sycamore tree along with the other two heritage trees shown on the tree survey.

**Motion:** Adam Dale made the motion to approve the site and tree removals with the exception of the Heritage Pecan, Live Oak, and the 17" DBH Sycamore. In addition, the pool should be avoided if possible and that the landscape plan reflect the principles of the LMP with consideration to tie-in the surrounding green space to enhance the area in general.

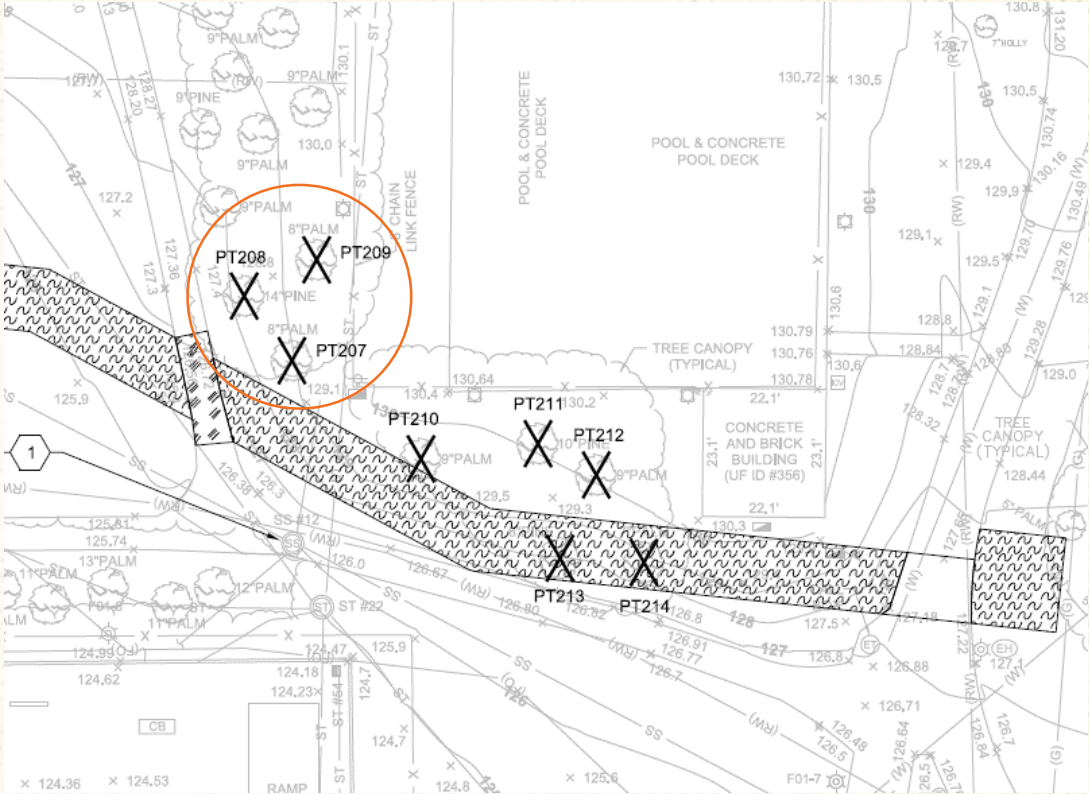
**Second:** Alpa Nawre

**Motion Carried Unanimously**

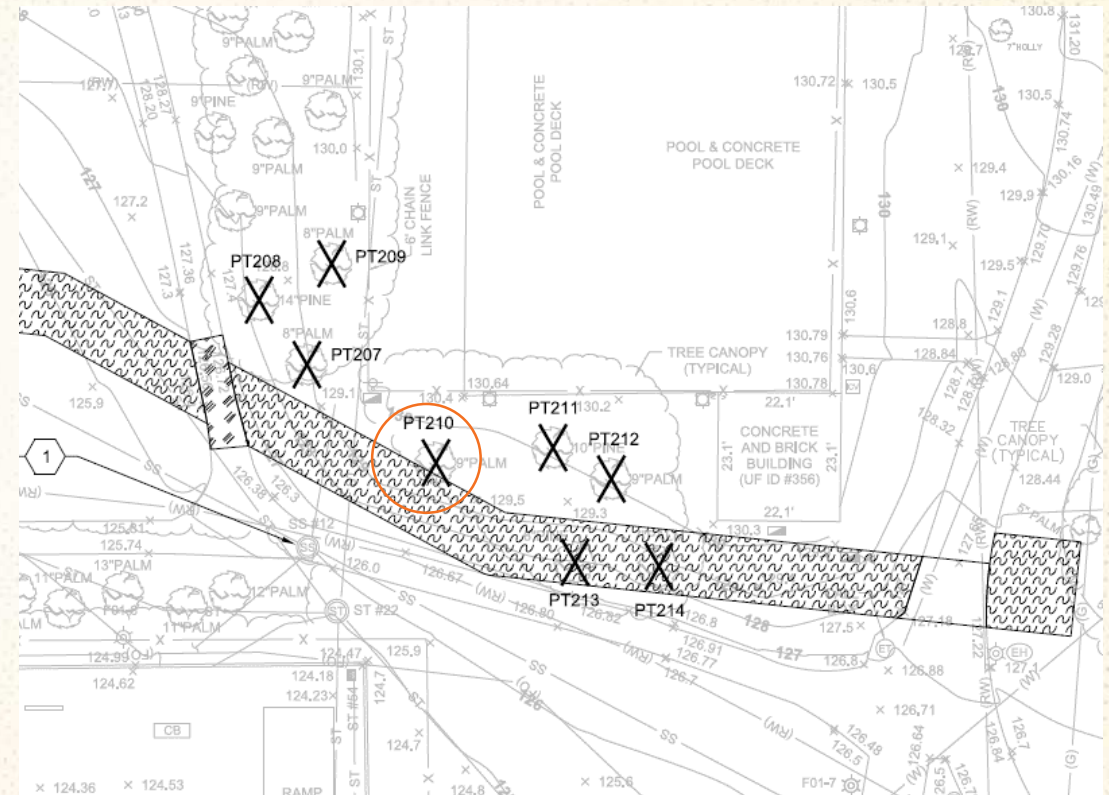




- PT207: 8" Palm
- PT208: 14" Pine
- PT209: 8" Palm



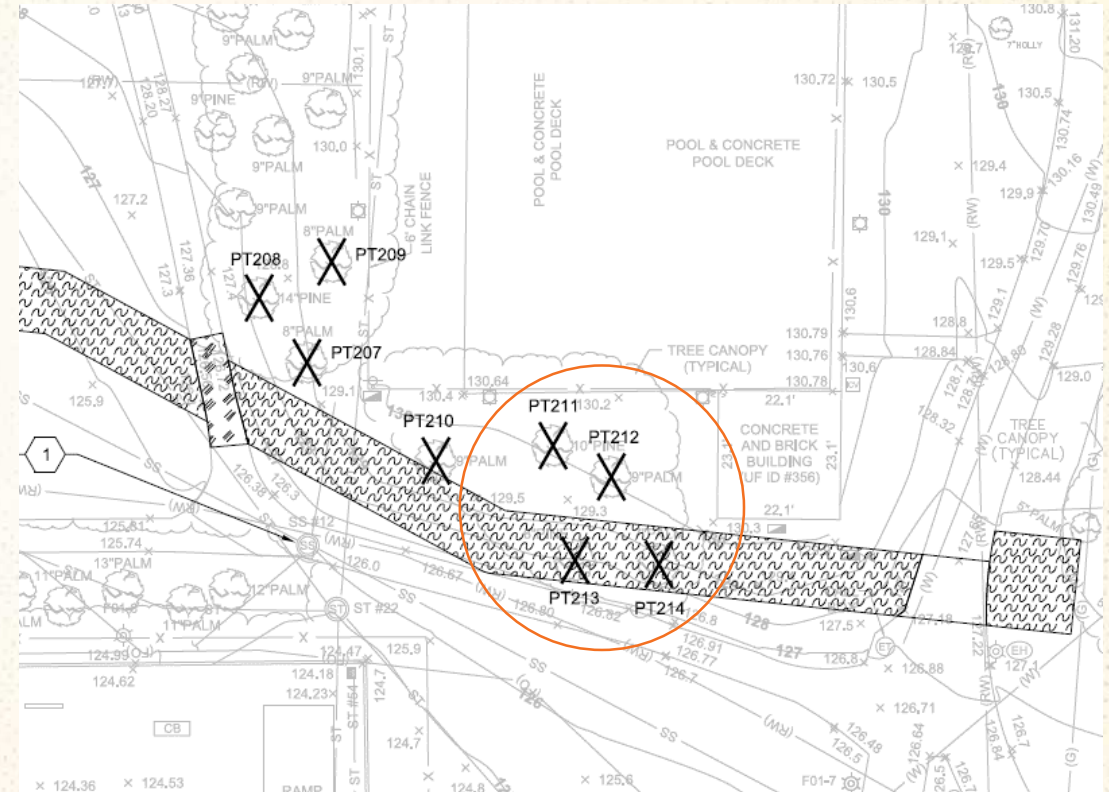






PT211: 10" Pine  
PT212: 9" Palm

PT213: 8" Pine  
PT214: 7" Palm





Tree Impact Summary

16 known tree impacts – no heritage trees

Species	Size (inches)	Quantity
Palm	7	1
	8	2
	9	2
	13	3
	14	2
	15	1
Pine	8	1
	9	1
	10	1
	14	2



Questions?