

UF-373

FLMNH - Special Collections Building

CCD Phase

**Lakes, Vegetation and Landscaping
Committee [LVLC]**

July 8, 2021

Planning, Design & Construction: Jim Vignola, PM
Architect/Landscape Architect: The HASKELL Company
Civil Engineering Consultant: JBrown Professional Group Inc.

UF-373
FLMNH - Special Collections Building

- Revised site submittal (Truck Turn-around)
- Background / Scope / Location / Description
- Tree Impacts
- Current Status
- Committee Approval/Recommendation

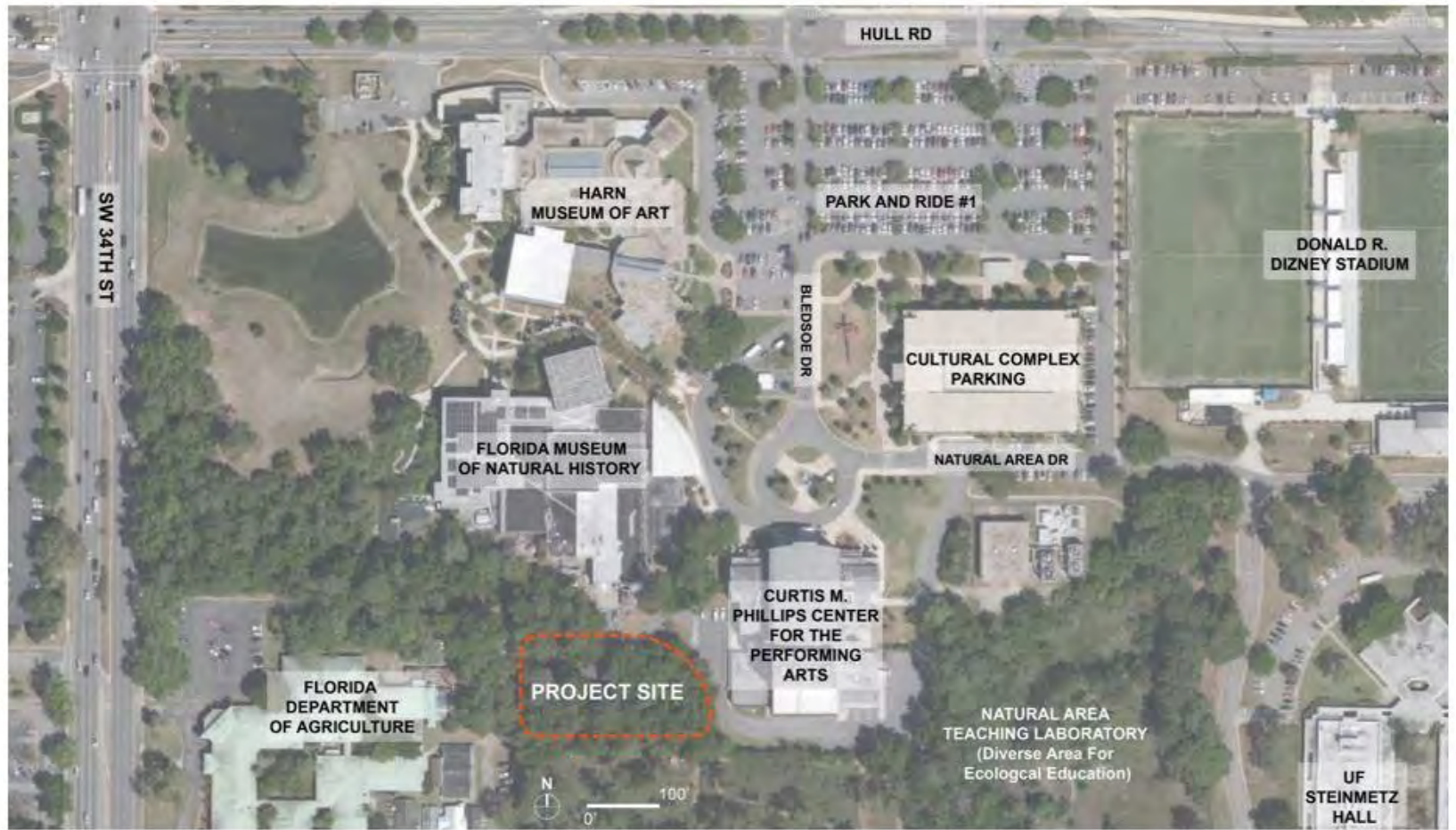
UF-373

FLMNH - Special Collections Building

- **Background:**
 - Previously Presented and Approved at ASD Phase in May 14, 2020, DD Phase in Nov 2020 and revised per comments in January 2021
- **Scope:**
 - 2 Stories w/Rooftop Mechanical
 - +/-23,500 GSF
 - 1/3 Office/Lab, 2/3 Compact Storage (Wet Collections)

Location

AERIAL VIEW OF GREENFIELD SITE



UF-373
FLMNH - Special Collections Building

- Revised Site/Tree Impacts

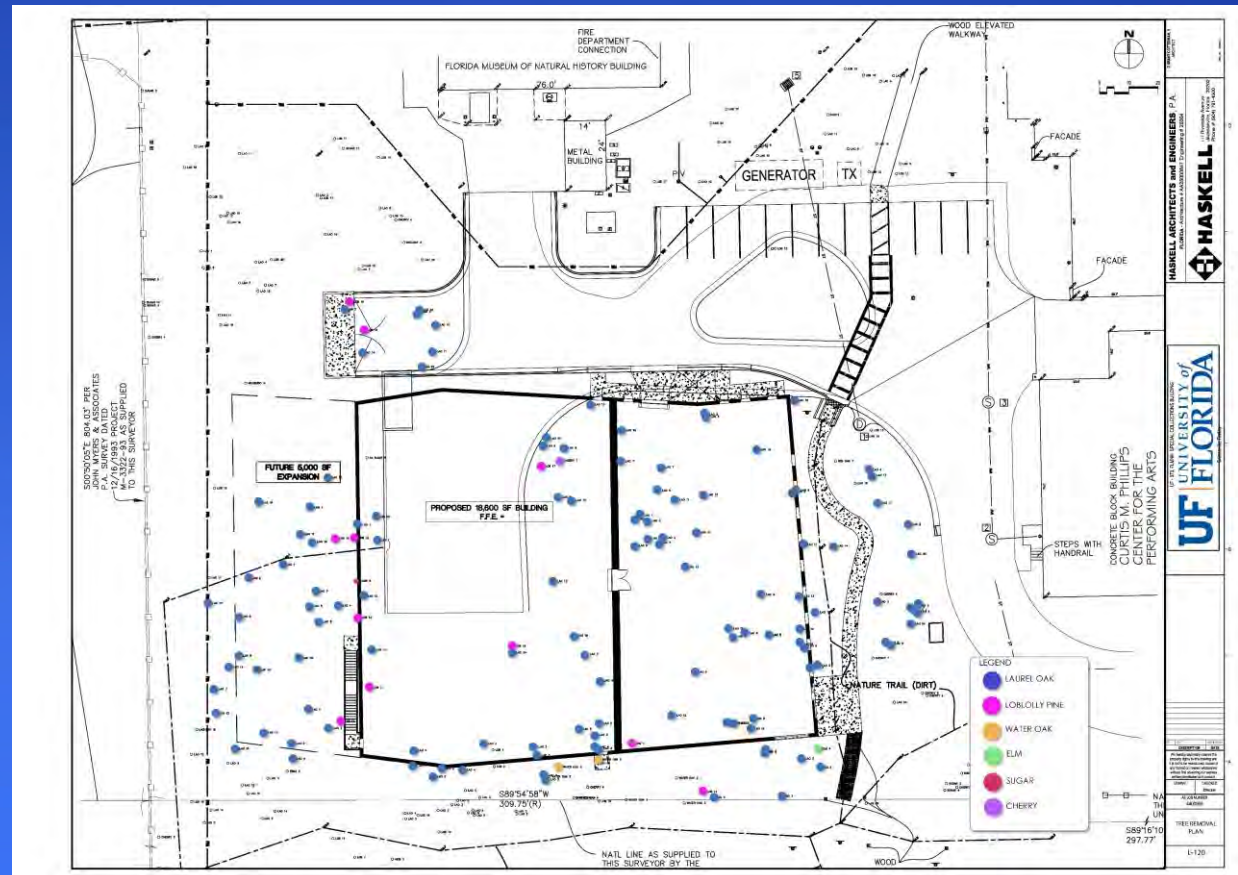
TREE REMOVAL

● Current Approved Plan

Regulated Trees
to be Removed:

- (117) Laurel Oaks
- (11) Loblolly Pine
- (2) Water Oak
- (1) Elm
- (1) Sugar
- (1) Cherry

(133) TOTAL



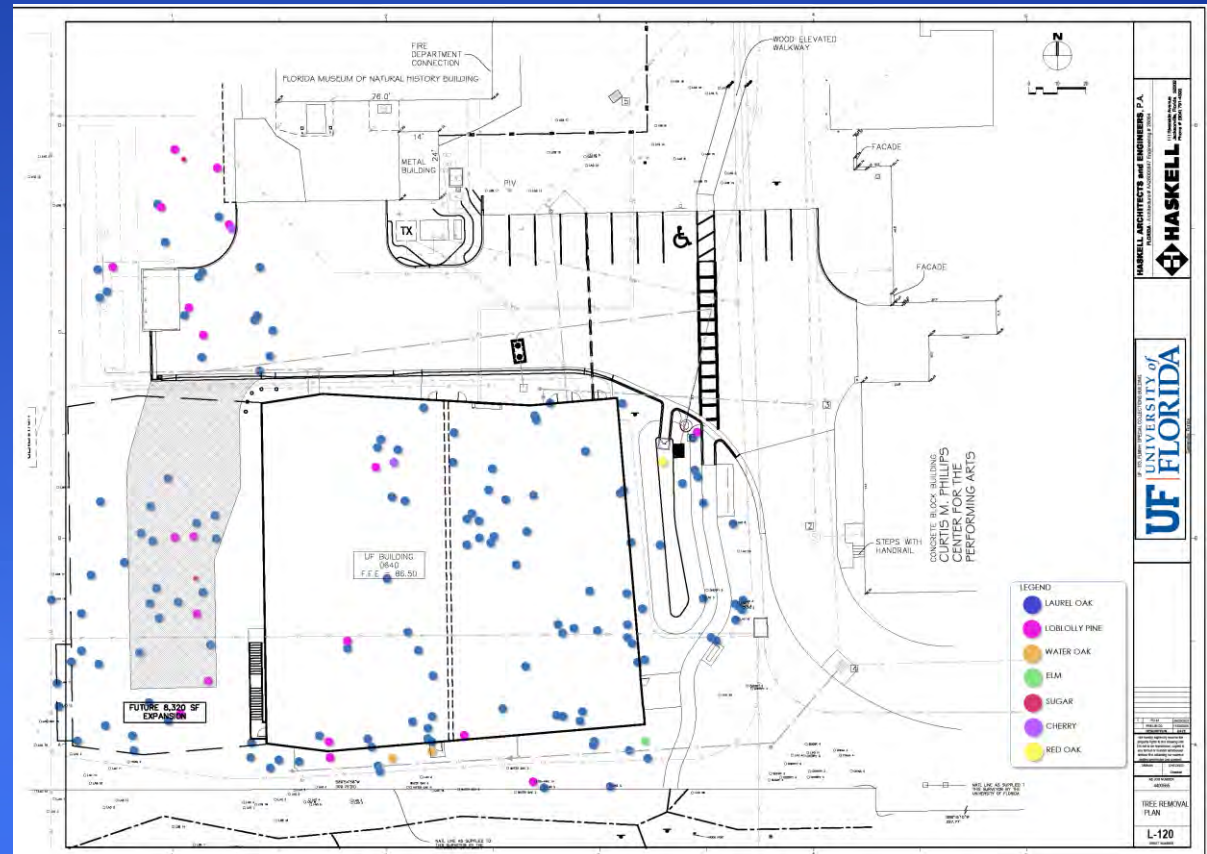
TREE REMOVAL

- Proposed Plan

Regulated Trees
to be Removed:

- (121) Laurel Oaks
- (15) Loblolly Pine
- (2) Water Oak
- (1) Elm
- (2) Sugar
- (4) Cherry

(145) TOTAL



TREE MITIGATION

• Current Approved Plan

Type	Suggested Species	Size
Canopy	Live Oak	100 Gal
Evergreen	Eastern Red Cedar	65 Gal
Pine Trees	Longleaf Pine	30 Gal

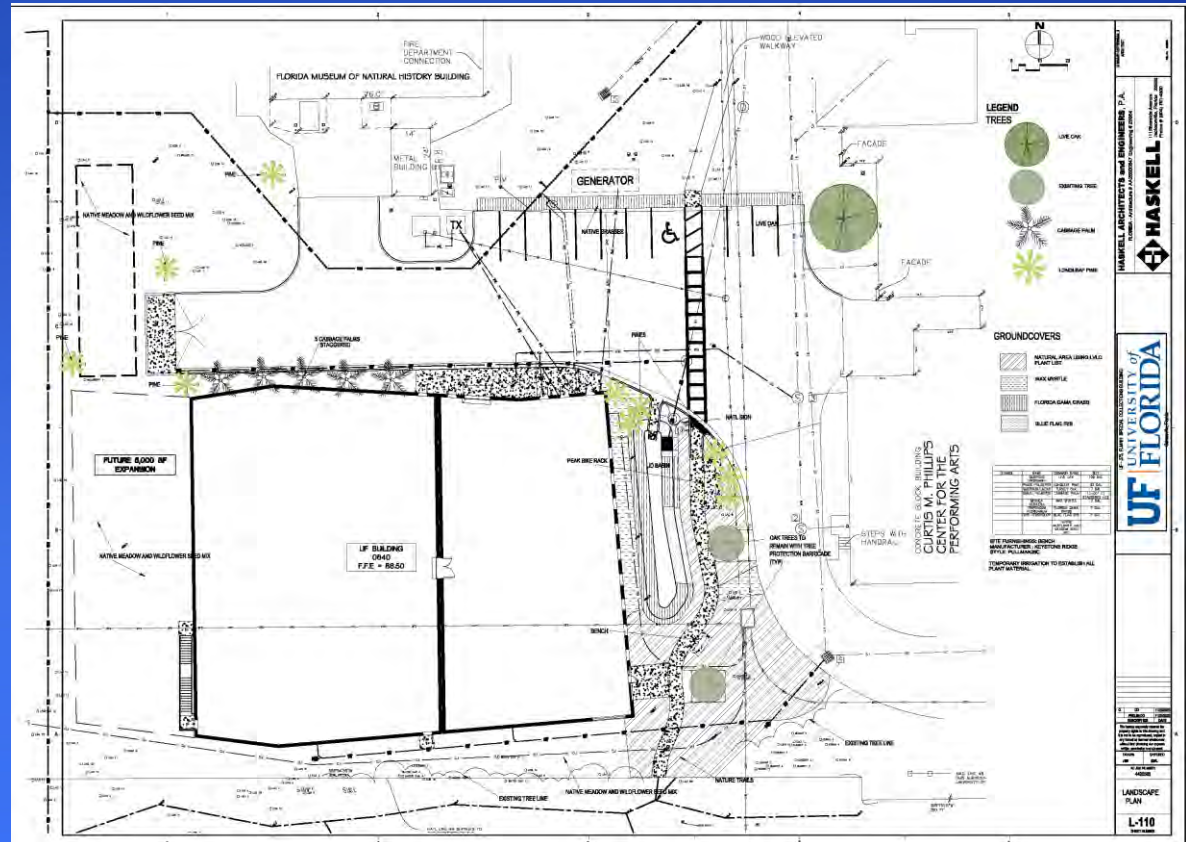
Tree Mitigation Totals

Regulated Trees to be Removed:
(133) Total Trees

Total Trees Required for 2:1
Mitigation:
(266) Total Trees

Total Trees to be Provided:
(29) Total Trees

Total Mitigation Deficit:
(237) Total Trees x \$250 = \$59,250



UF-373
FLMNH - Special Collections Building

- Current Status:
 - Building Permit Issuance: May 12, 2021
 - Construction Began: June 16, 2021
- Requesting approval for Truck Turn-around

UF-373
FLMNH - Special Collections Building

- Questions?
- Committee Approval/Recommendation

UF-394
PK Yonge
(Storm Drainage Supplement)

Construction Phase

Lake Vegetation & Landscaping
Committee

July 08, 2021

Keith Humphreys, Project Manager
Planning, Design & Construction

UF-394

PK Yonge Supplemental Storm Drainage

- Location / Scope
- Tree Impacts
- Current Status
- Committee Approval/Recommendation

**Location: PK
Yonge Campus.
North side of
Building “H”
and Elementary
Building**



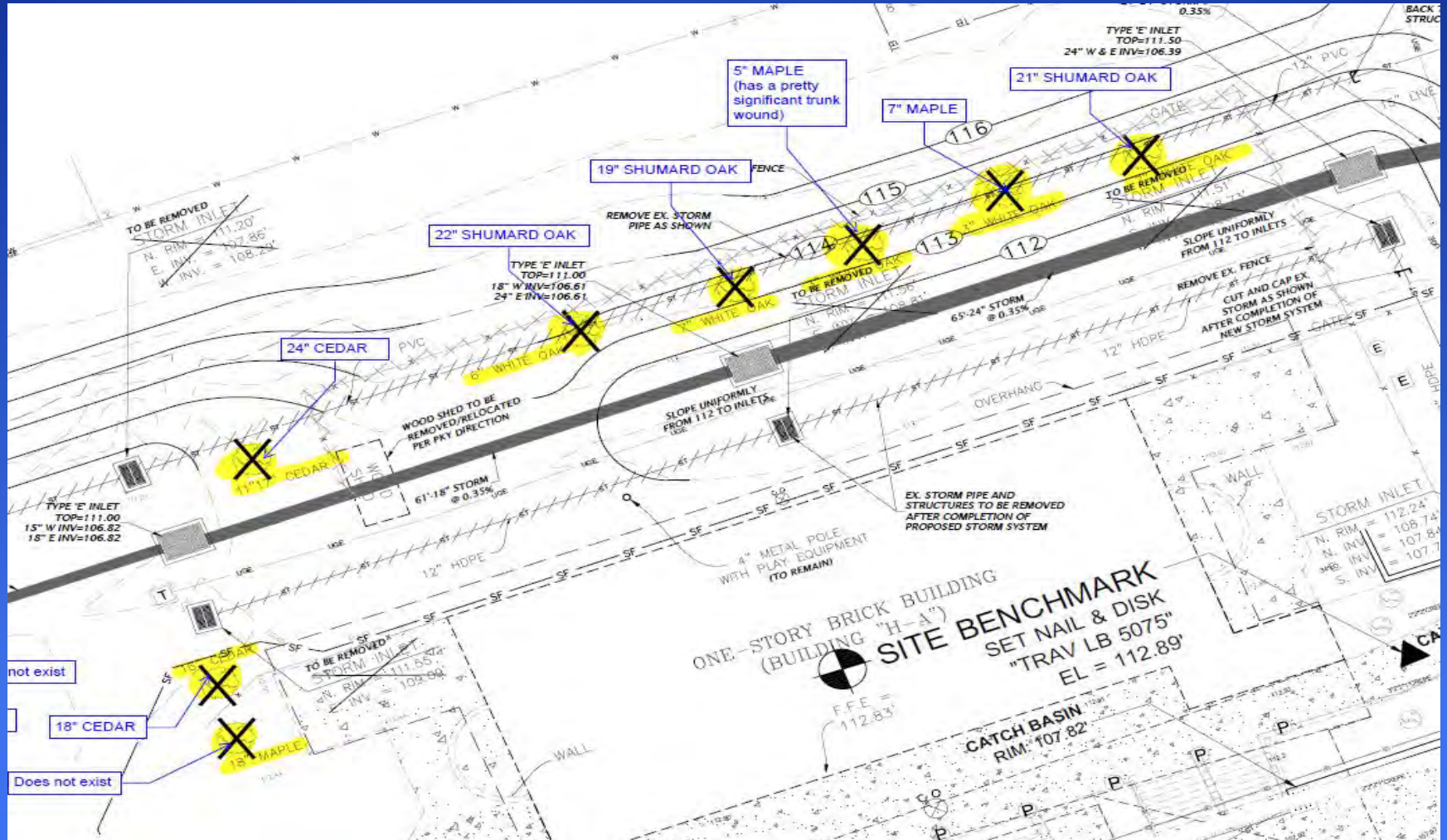
Site Aerial View

Project Scope:

The current storm system needs to have a supplement system to stop flooding that occasionally occurs. Since the removal of 2 buildings on the north side of the elementary building, the exposed area required drainage plans. The plan is to install a supplemental storm system that adds 7 inlets for water to drain. Additionally, the land will be shaped with a swale to control the direction of the water.



Cad plan for drain system



- Tree Impacts due to storm line path
Trees on north of building “H” and the elementary building.



Tree Impacts

3 Shumard Oak: 1 – 22”

1 – 19”

1 – 21”

2 Cedar: 1 – 24”

1 – 18”

2 Maple 1 – 7”

1 – 5”

PK will be planting required trees to mitigate the loss of these trees. Location TBD.

Current Status

- Ready to proceed
- Questions?

UF

UNIVERSITY of
FLORIDA

Lakes, Vegetation and Landscaping Committee July 8, 2021

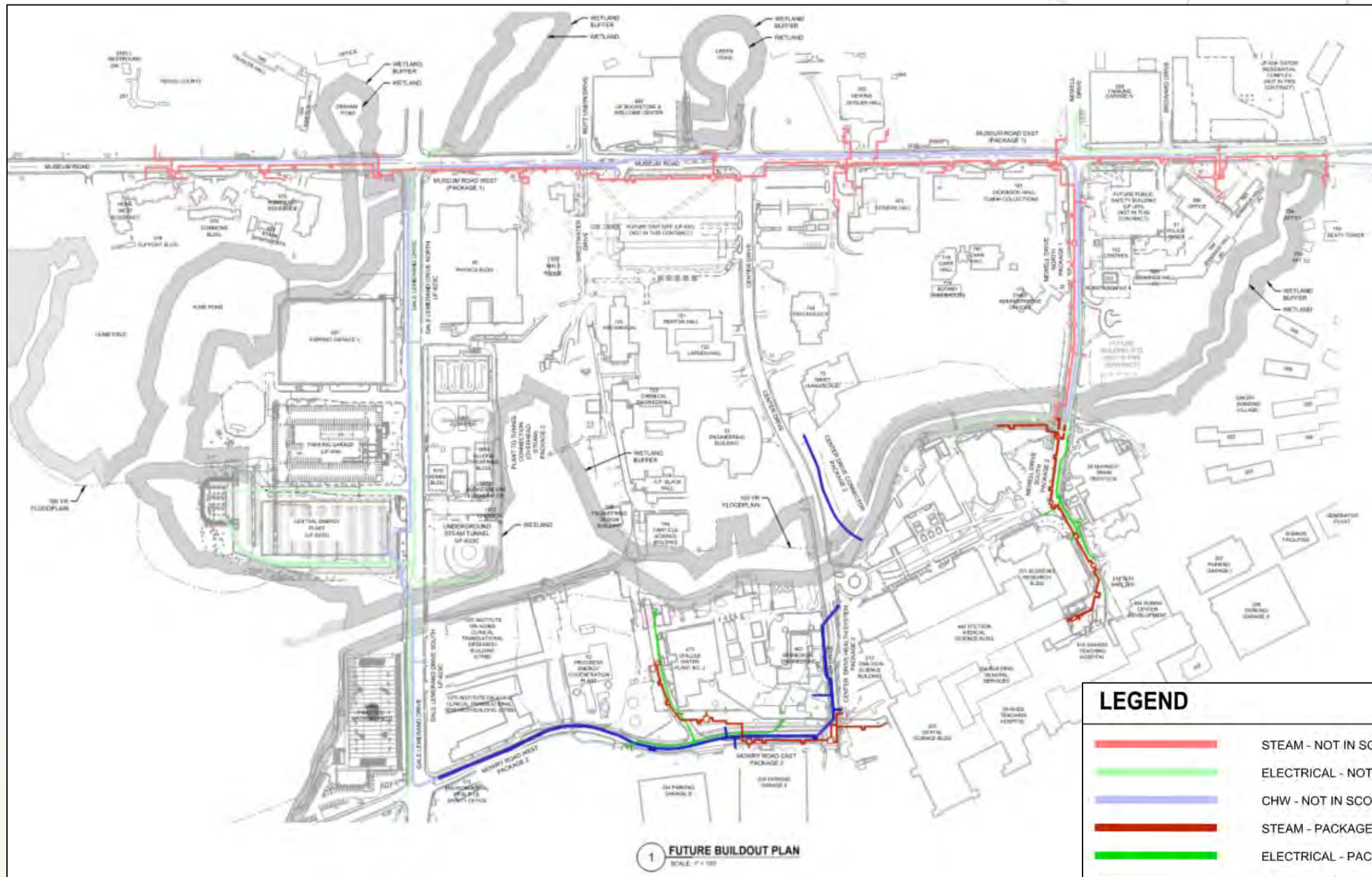
UF-623B THERMAL UTILITY INFRASTRUCTURE UPDATE
UF-623C ELECTRICAL UTILITY INFRASTRUCTURE UPDATE

Jacobs



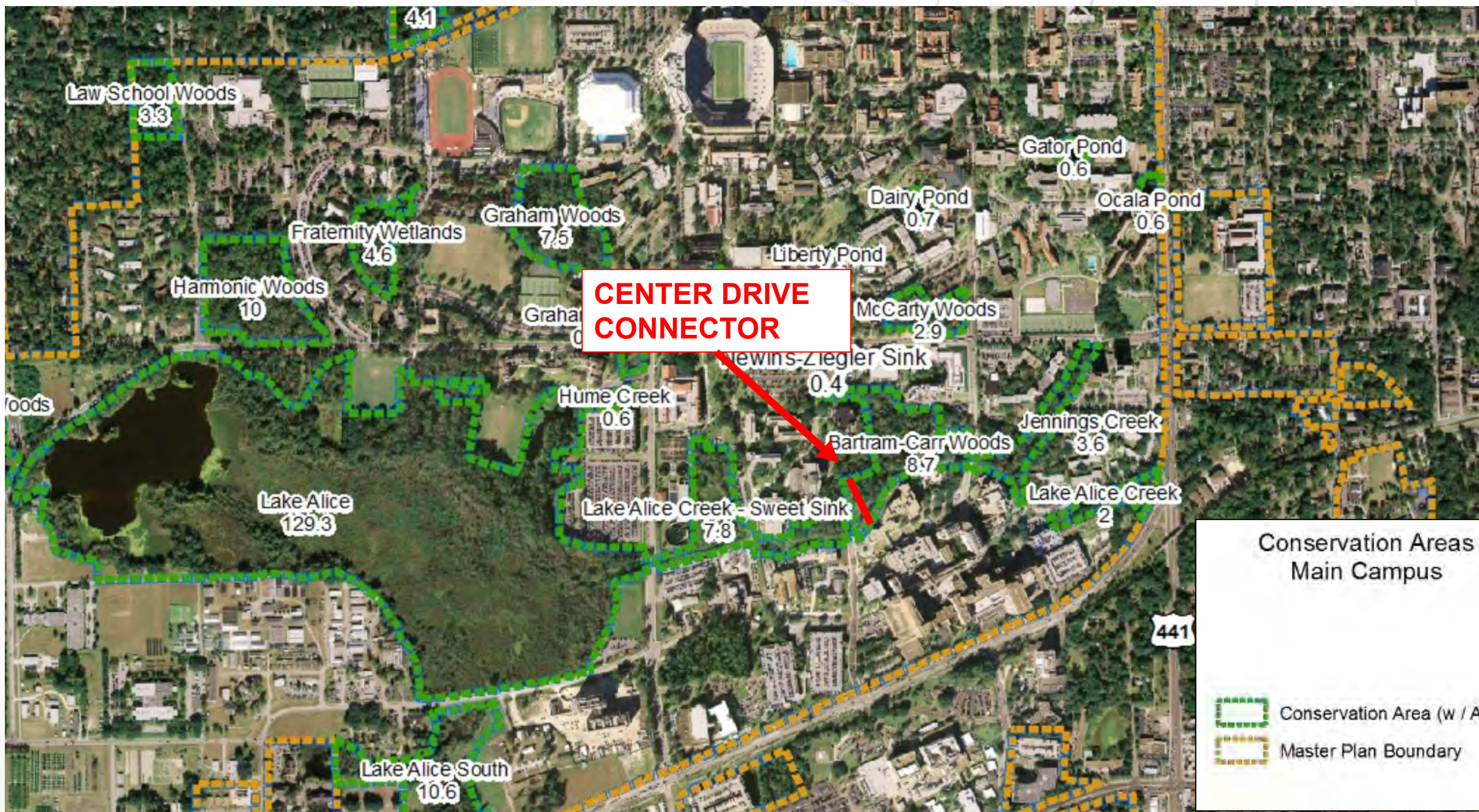
UF-623B: Thermal Utility Infrastructure – Package 2

UF-623B: Thermal Utility Infrastructure – Package 2



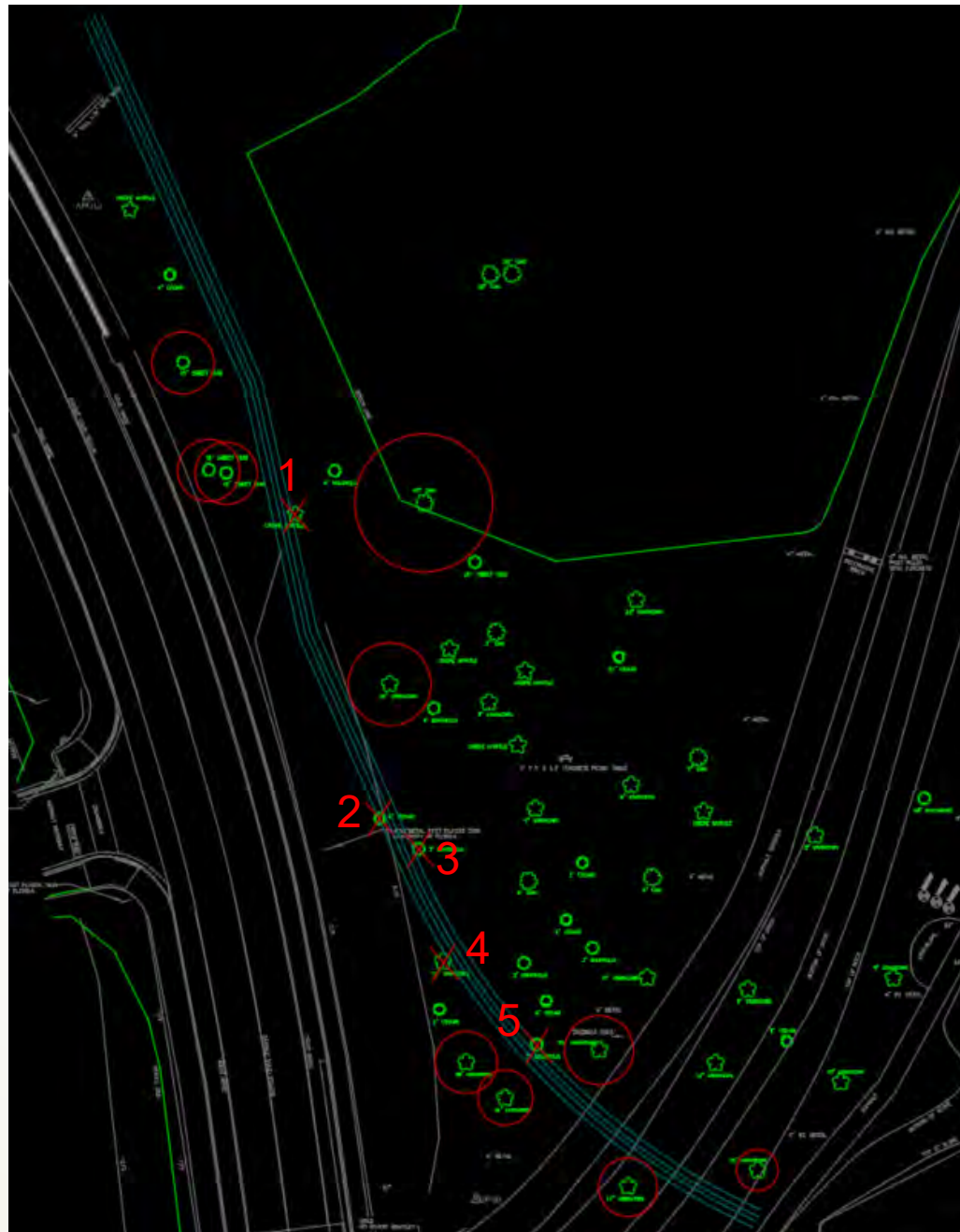
**FUTURE
BUILD-OUT
PLAN**

UF-623B: Thermal Utility Infrastructure – Package 2



Conservation Areas
Main Campus

- Conservation Area (w / Acreage)
- Master Plan Boundary



- Trees to be Protected
- ✕ Trees to be Removed

TREE REMOVAL TABLE - CENTER DRIVE HEALTH CONNECTOR

#	SPECIES	SIZE
1	Crepe Myrtle	4.25"
2	Cedar	5"
3	Magnolia	3"
4	Catalpa	19"
5	Magnolia	3"

No heritage trees proposed for removal

*Heritage trees are defined by University of Florida as a canopy species measuring 20" or more in diameter (DBH) except for Water Oaks, Laurel Oaks, Loblolly Pines, Sugarberry and Sweetgums that shall be classified as heritage trees at 30" diameter DBH. Understory species are considered heritage at 15" diameter DBH.





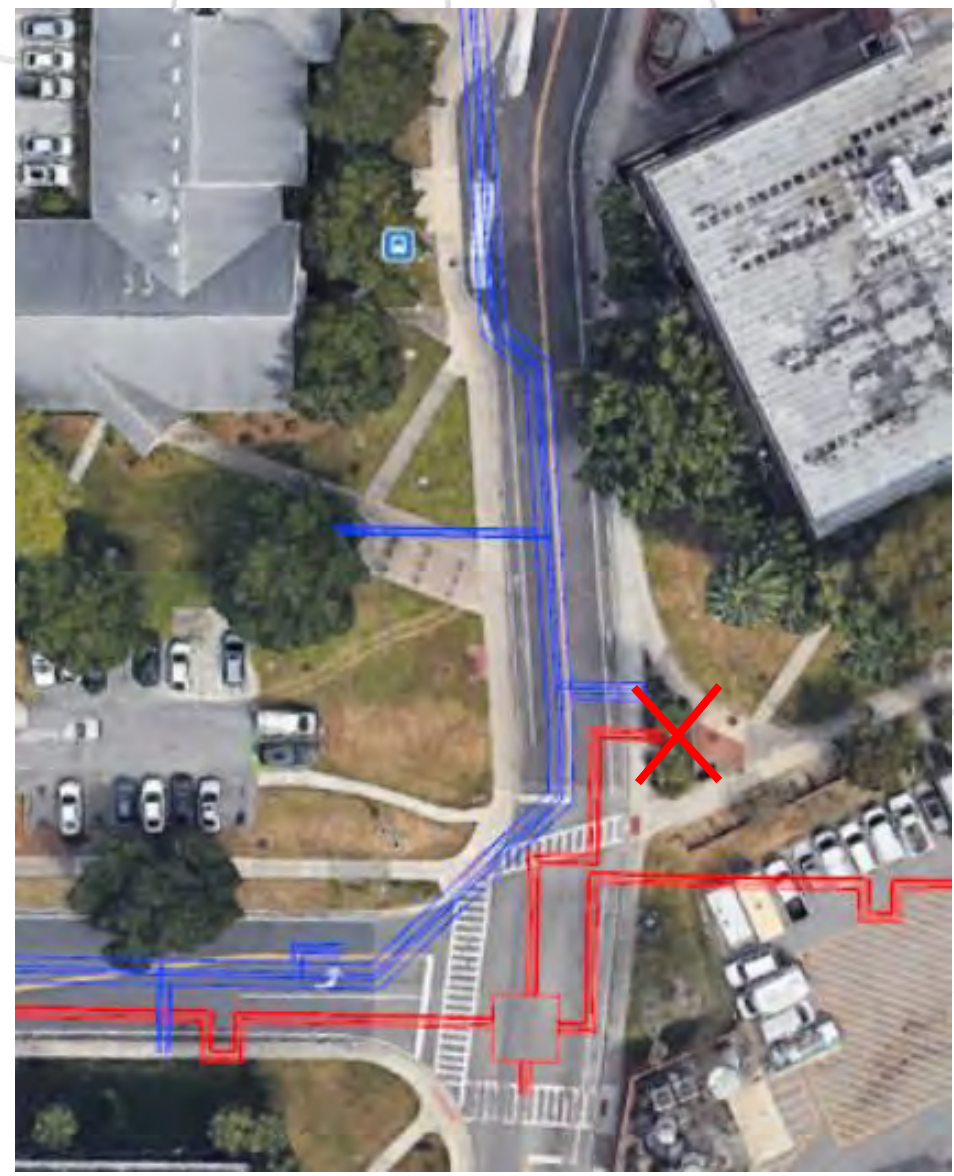
- Trees to be Protected
- ✕ Trees to be Removed

TREE REMOVAL TABLE - CENTER DRIVE HEALTH CONNECTOR

#	SPECIES	SIZE
1	Palm	8"
2	Palm	11"
3	Palm	7"

No heritage trees proposed for removal

*Heritage trees are defined by University of Florida as a canopy species measuring 20" or more in diameter (DBH) except for Water Oaks, Laurel Oaks, Loblolly Pines, Sugarberry and Sweetgums that shall be classified as heritage trees at 30" diameter DBH. Understory species are considered heritage at 15" diameter DBH.





- Trees to be Protected
- ⊖ Trees to be Impacted

**TREE IMPACT TABLE -
MOWRY ROAD EAST/ RABON
DRIVEWAY**

#	SPECIES	SIZE
1	Oak	15"

No heritage trees proposed for removal

*Heritage trees are defined by University of Florida as a canopy species measuring 20" or more in diameter (DBH) except for Water Oaks, Laurel Oaks, Loblolly Pines, Sugarberry and Sweetgums that shall be classified as heritage trees at 30" diameter DBH. Understory species are considered heritage at 15" diameter DBH.



UF-623C: Electrical Utility Infrastructure



- Overhead to Duct bank Conversion Open
 - Modification to the current UF-623C design
 - Removal of existing poles
 - No impacts to trees
 - Light poles replacement to comply with UF LMP guidelines for Precinct 1 (Core Campus)

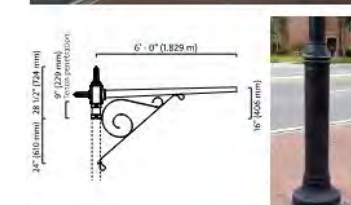


3.2 ROADWAYS



TRADITIONAL LIGHTPOLE

Manufacturer:	Philips Lumec Lighting (855) 486-2216 www.philips.com/luminaires
Style:	Urban Renaissance LED Pendant
Luminaire:	RN20; Prismatic globe
Base/Pole:	AM8
Arm:	Bracket PR6
Height:	25'-30'
Color:	Black
Precinct:	1, S.1, 2





- New Pad-Mount Transformers
 - Replacement of the Pole-Mount Transformer



QUESTIONS?

MP06556 Lake Wauburg North Shore - Waterfront Equipment Building

LAKES, VEGETATION AND LANDSCAPING COMMITTEE PRESENTATION – JULY 8, 2021



MP06556 Lake Wauburg North Shore - Waterfront Equipment Building

PROJECT TEAM:

- ❑ PDC Project Manager = Andrew Meeker, PLA
- ❑ Customer = **RecSports** (Cat Cramp, Senior Associate Director, Programs)
- ❑ Architect = **LEVEL Architecture + Interiors** (Bill Corbitt, Senior Project Manager)
- ❑ Civil Engineer + Permitting = **DRMP, Inc.**
- ❑ Mechanical/Electrical/Plumbing Engineer = **Campbell Spellicy Engineering**
- ❑ Contractor = **TBD**

PROJECT SCOPE:

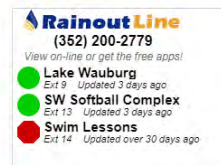
Design & construct a
±300 sq.ft. storage
building for waterfront
equipment check in/out



LAKE WAUBURG NORTH SHORE IS OPEN!



Lake Wauburg Main: **352-294-7090**
North Shore Boat House: **352-294-7095**



[ABOUT](#) [HOURS](#) [GUEST INFO](#) [EQUIPMENT CHECKOUT](#) [RESOURCES](#)

The following equipment is available for checkout at Lake Wauburg. See a staff member or visit the boat house for more information.

- Bocce Balls
- Canoes (Up to 3 Persons)
- Cornhole, Croquet Disc, and Golf Discs (South Shore)
- Footballs and Flags
- Frisbees
- Horseshoes
- John Boats (Up to 5 Persons)
- Kayaks (1 & 2 Person)
- Ladder Golf, Mountain Bikes, and Helmets (South Shore)
- Paddle Boards (North Park/ Swim Check Required)
- Pedal Boats (Up to 4 Persons)
- Sailboats (Sail Card Required) (North Park)
- Soccer Balls
- Tether Ball
- Ultimate Frisbees (South Shore)
- Volleyballs
- Washers

MP06556 Lake Wauburg North Shore - Waterfront Equipment Building Context Map



CYPRESS
LODGE

ADA ACCESSIBLE
PARKING +
RESTROOM BUILDING

PICNIC PAVILION

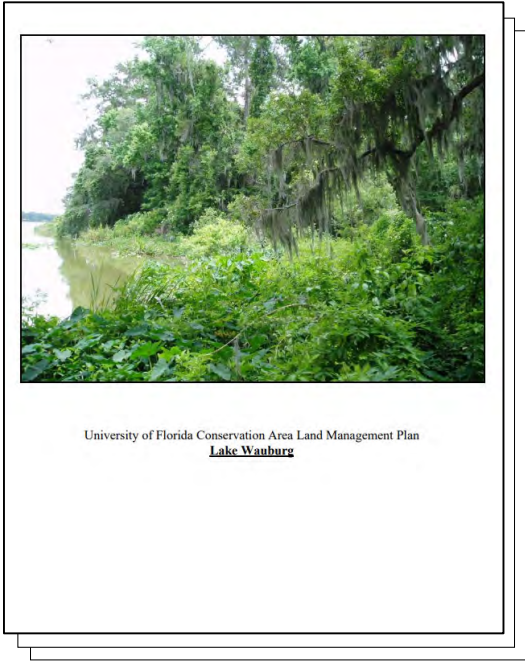
PROPOSED
EQUIPMENT BUILDING

EXISTING
EQUIPMENT
BUILDING

MP06556 Lake Wauburg North Shore - Waterfront Equipment Building

PROJECT DUE DILIGENCE:

- ✓ Topographic + Tree Survey = **Complete**
- ✓ Geotechnical Analysis = **Complete**
- ✓ Alachua County Environmental Protection Department = **No Review Necessary**
- ✓ SJRWMD + FDEP Permitting = **Not Triggered, But Submitting Exemption Verification Docs**
- ✓ Florida Division of Historical Resources = **Engagement In Progress**
- ✓ Lake Wauburg Conservation Area Land Management Plan = **No Known Impacts**
- ✓ 330' Bald Eagle Nesting Buffer = **No Known Impacts**
- ✓ Tree Mitigation Policy + UF Design and Construction Standards

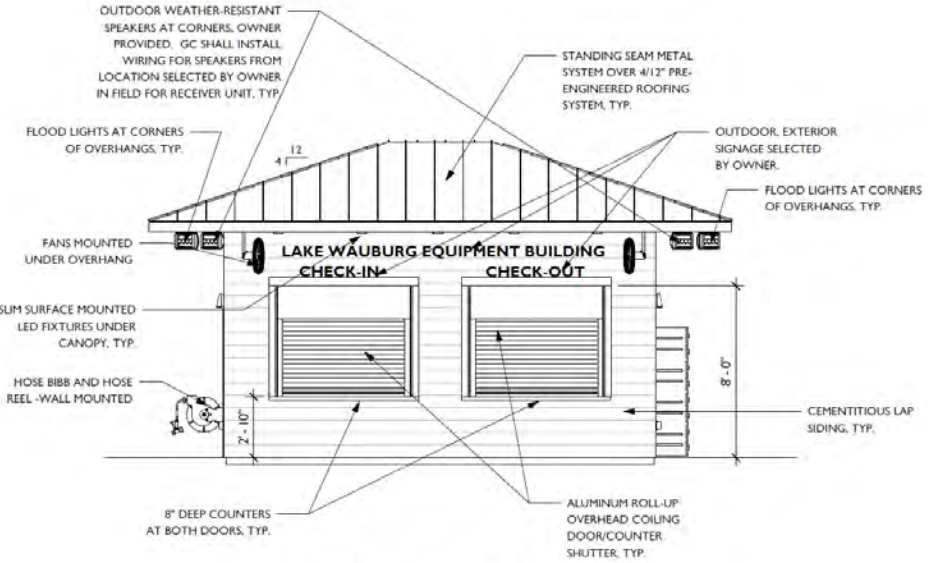


MP06556 Lake Wauburg North Shore - Waterfront Equipment Building

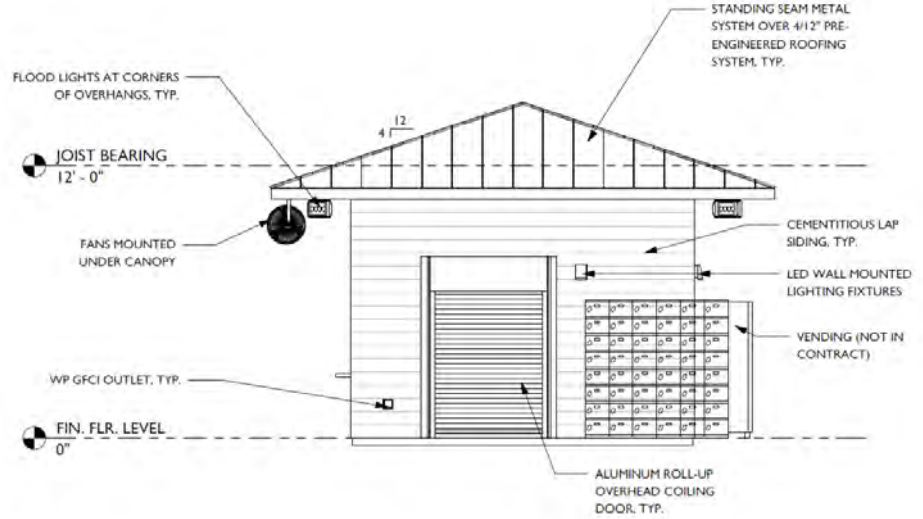


MP06556 Lake Wauburg North Shore - Waterfront Equipment Building

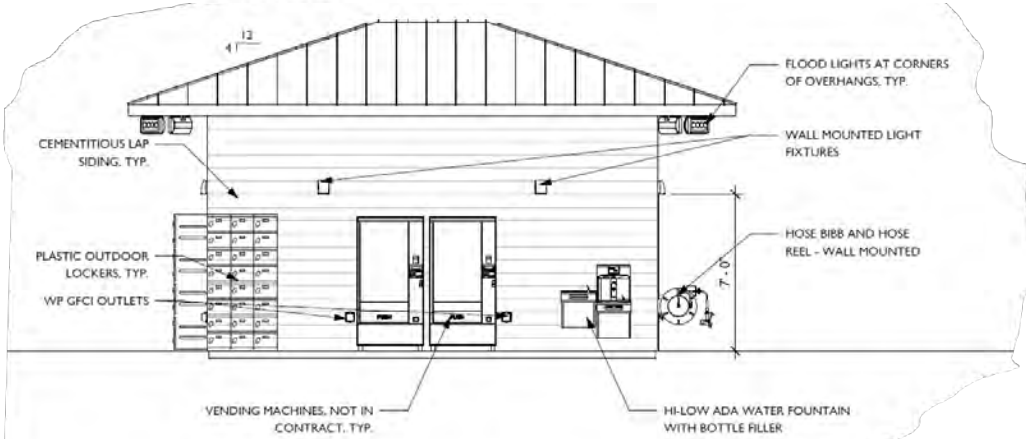
60% Construction Documents



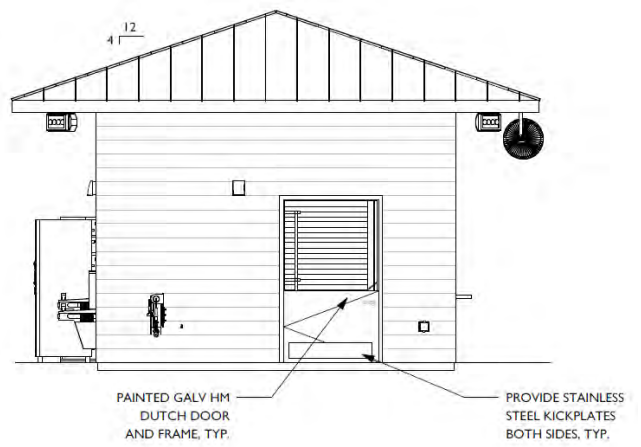
2 ELEVATION - SOUTH
 A2.01 1/4" = 1'-0"
 SCALE IS APPROX.



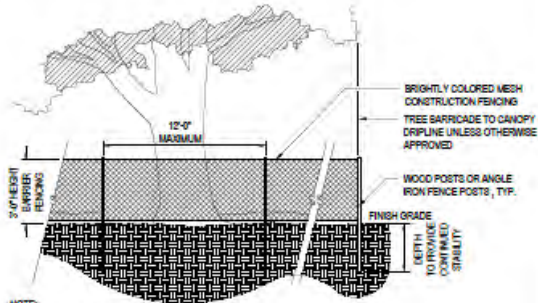
1 ELEVATION - EAST
 A2.01 1/4" = 1'-0"
 SCALE IS APPROX.



4 ELEVATION - NORTH
 A2.01 1/4" = 1'-0"
 SCALE IS APPROX.



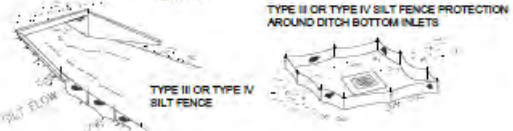
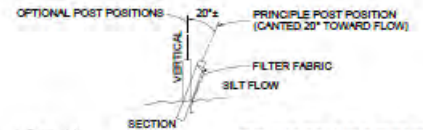
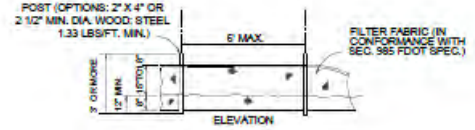
3 ELEVATION - WEST
 A2.01 1/4" = 1'-0"
 SCALE IS APPROX.



- NOTE:
1. TREE PROTECTION DETAILS ON LANDSCAPE PLANS SUPERSEDE THIS DETAIL.
 2. DO NOT STORE MATERIALS OR ALLOW ENCROACHMENT OF VEHICLES OR MACHINERY WITHIN TREE BARRIER AREA. NO BUILDING MATERIALS, FILL, MACHINERY OR HARMFUL CHEMICALS SHALL BE PLACED WITHIN PROTECTIVE BARRIERS.
 3. NO GRADE CHANGES MAY OCCUR WITHIN TREE BARRIER AREA WITHOUT APPROVAL.
 4. NO ATTACHMENTS OR WIRES OTHER THAN THOSE OF A PROTECTIVE AND NON-DAMAGING NATURE MAY BE ATTACHED TO ANY TREE.
 5. LANDSCAPE PREPARATION IN THE UNDISTURBED AREA SHALL BE LIMITED TO SHALLOW DIGGING OF THE AREA. DIGGING SHALL BE LIMITED TO A DEPTH OF TWO INCHES UNLESS SPECIFICALLY APPROVED OR OTHERWISE. LANDSCAPING SHALL BE LIMITED TO PLACEMENT OF SOIL, MULCH, OR OTHER GROUND COVERS.
 6. TREE BARRIERS TO REMAIN IN PLACE UNTIL CONSTRUCTION IS COMPLETED.

1 TREE PROTECTION DETAIL

SCALE: N.T.S.



DO NOT DEPLOY IN A MANNER THAT SILT FENCES WILL ACT AS A DAM ACROSS PERMANENT FLOWING WATERCOURSES. SILT FENCES ARE TO BE USED AT UP- AND LOCATIONS AND TURBIDITY BARRIERS USED AT PERMANENT BODIES OF WATER

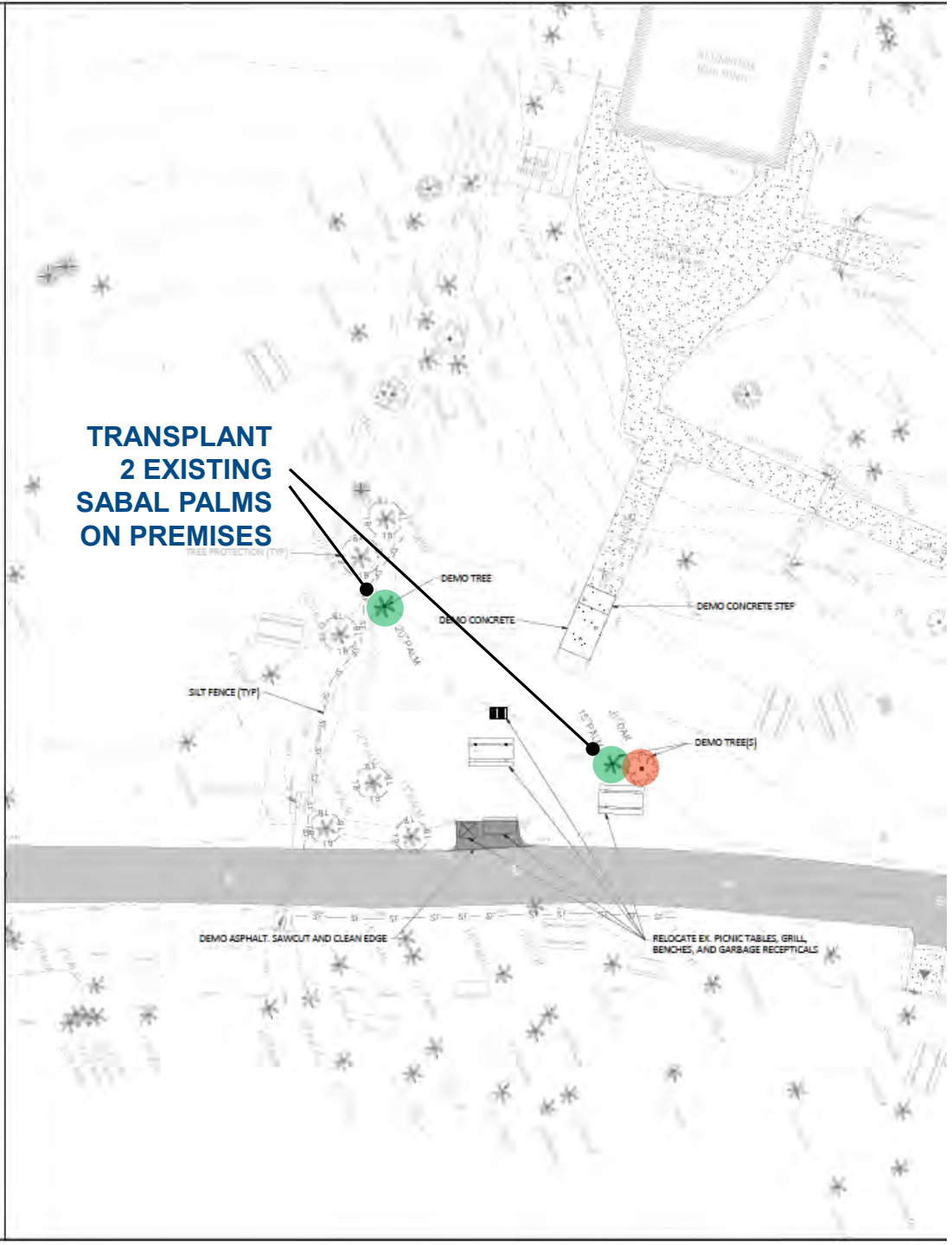
SILT FENCE APPLICATIONS



NOTE: SPACING FOR TYPE II FENCE TO BE IN ACCORDANCE WITH CHART L PLATE D-905 AND DITCH INSTALLATIONS AT DRAINAGE STRUCTURES ABOVE.

2 SILT FENCE DETAIL

SCALE: N.T.S.



TREE PRESERVATION & MITIGATION

- ❑ 20" Caliper Sweetgum Severely Damaged During 2019 Tornado





TREE PRESERVATION & MITIGATION SUMMARY

❑ 2 Relocated Sabal Palms

- ❑ Per UF Design and Construction Standards - 329000 Planting
 - ❑ Relocated trees must be planted in accordance with the latest edition of the "Principles and Practice of Planting Trees and Shrubs" by Gary W. Watson and E.B Himelick, published by the International Society of Arboriculture. The Physical Plant Division Urban Forester must approve new locations.

❑ 20" Sweetgum Removal

- ❑ Per Tree Mitigation Policy
 - ❑ Heritage trees are defined as canopy species measuring 20 inches or more in diameter (DBH), except for Water Oaks, Laurel Oaks, Loblolly Pines, Sugarberry and **Sweetgums** that shall be classified as heritage trees at **30 inches in diameter (DBH)**.
 - ❑ All trees below the heritage threshold must be relocated or replaced on a two for one basis (**two replacement trees for each removed**).
- ❑ Per UF Design and Construction Standards - 329000 Planting
 - ❑ Each replacement tree must be Florida Nursery Grade Number one or better and be a minimum of **eight feet in height**. Replacement trees must be selected with the advice and concurrence of the Facilities Services Grounds department.
- ❑ **Preliminary recommendation is to replace Sweetgum with one 8' tall Live Oak and one 8' tall Bald Cypress on premises.**

MP06556 Lake Wauburg North Shore - Waterfront Equipment Building LAKES, VEGETATION AND LANDSCAPING COMMITTEE PRESENTATION – JULY 8, 2021

THANKS + QUESTIONS



MP06579 Lake Wauburg North Shore - New Boatlift Dock

LAKES, VEGETATION AND LANDSCAPING COMMITTEE PRESENTATION – JULY 8, 2021



MP06579 Lake Wauburg North Shore - New Boatlift Dock

PROJECT TEAM:

- ❑ PDC Project Manager = Andrew Meeker, PLA
- ❑ Customer = **RecSports** (Cat Cramp, Senior Associate Director, Programs)
- ❑ Architect = **Straughn Trout Architects** (Tim Hoeft, AIA, Managing Principal)
- ❑ Civil Engineer + Permitting = **DRMP, Inc.**
- ❑ Mechanical/Electrical/Plumbing Engineer = **Campbell Spellicy Engineering**
- ❑ Geotech + Structural Engineering = **GSE Engineering**
- ❑ Contractor = **TBD**

PROJECT SCOPE:

Design & construct a new covered replacement boatlift dock with two slips for storage of two water safety boats.



MP06579 Lake Wauburg North Shore - New Boatlift Dock

Context Map



**EXISTING
SAILBOAT
DOCK**

**EXISTING ADA
ACCESSIBLE DOCK**

**EXISTING SWIM DOCK
+ WATER SAFETY
OBSERVATION POST**

**PROPOSED
BOATLIFT
DOCK**



MP06579 Lake Wauburg North Shore - New Boatlift Dock

December 2019 Tornado Destruction of Existing Boatlift Dock



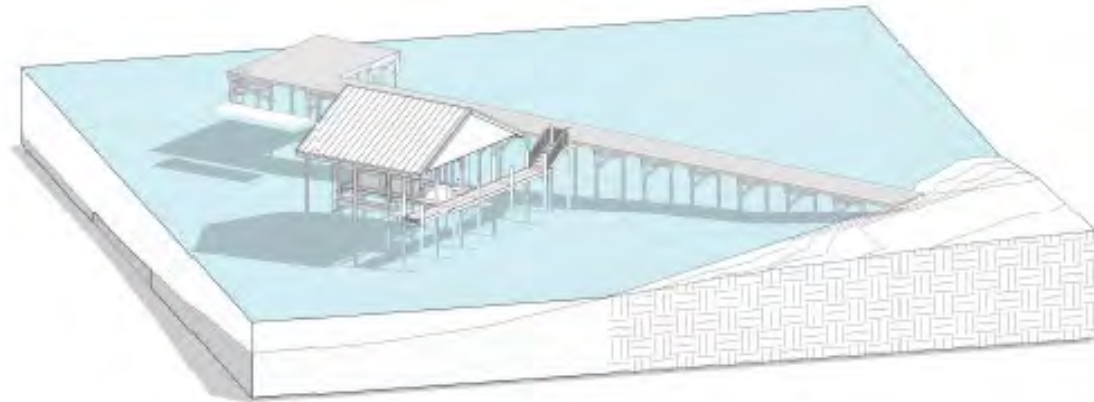
MP06579 Lake Wauburg North Shore - New Boatlift Dock Concept Plan



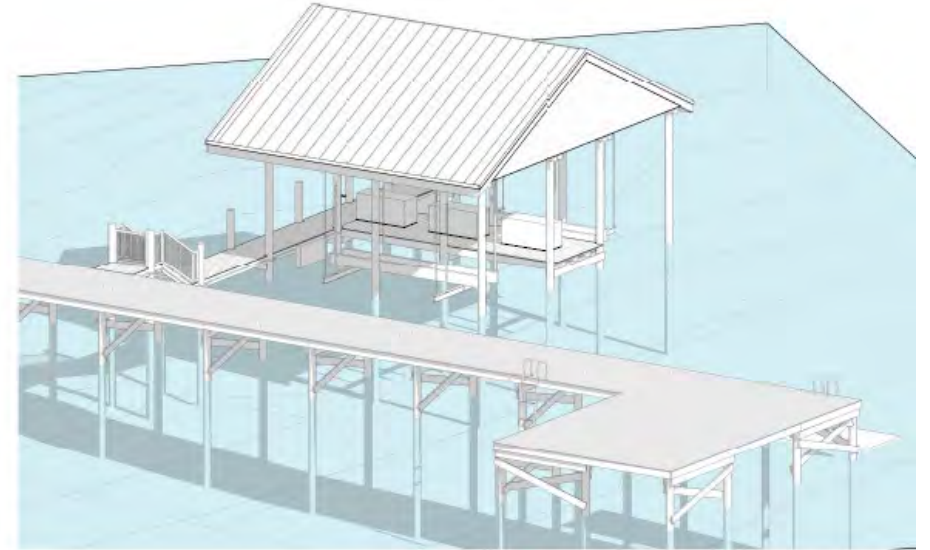
**PROPOSED
BOATLIFT
DOCK**

**EXISTING SWIM DOCK
+ WATER SAFETY
OBSERVATION POST**

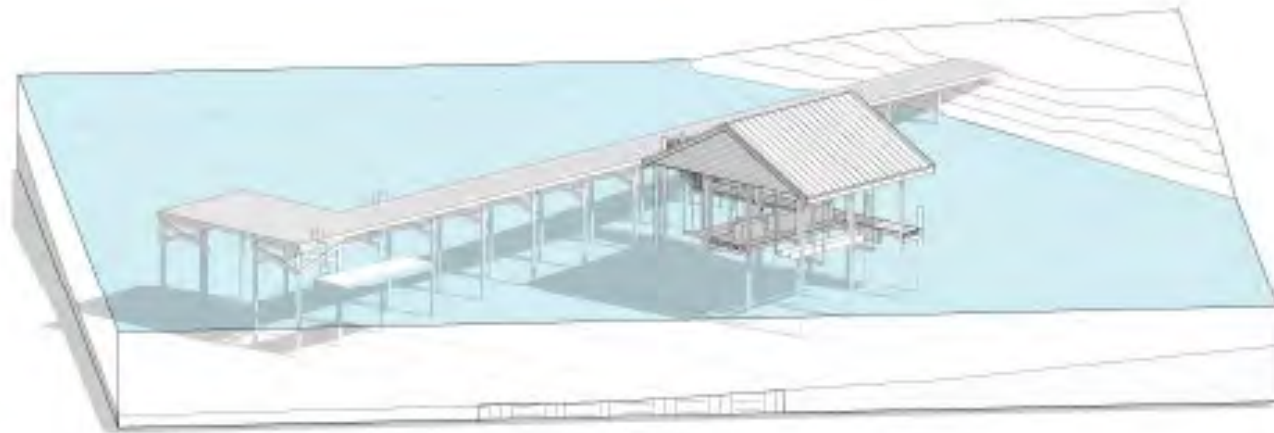
MP06579 Lake Wauburg North Shore - New Boatlift Dock Schematic Plans



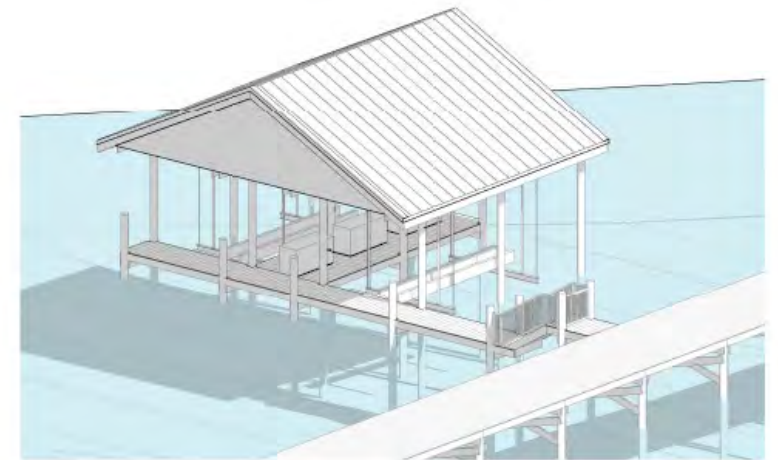
NORTH EXTERIOR VIEW



SOUTH EXTERIOR VIEW

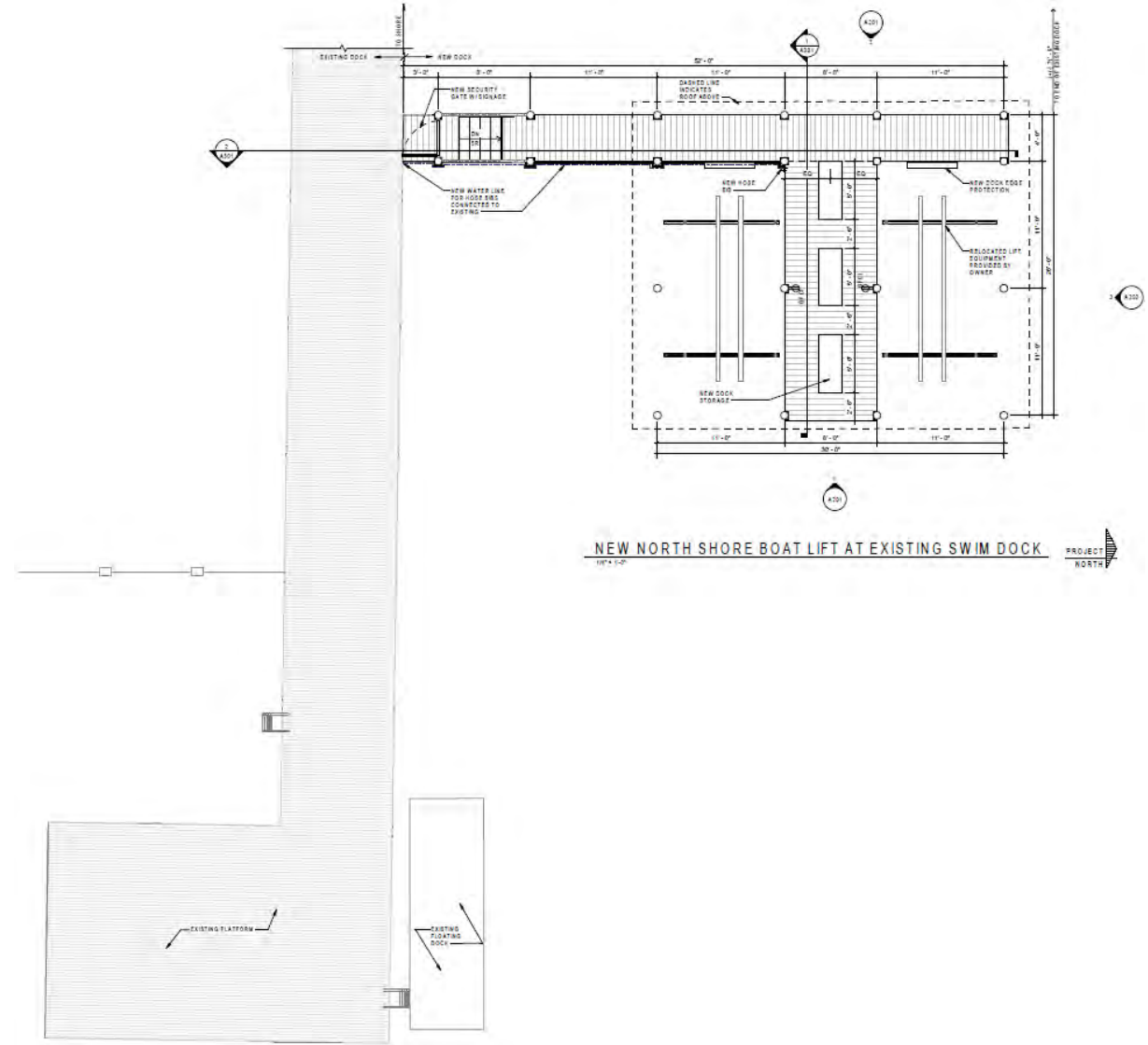
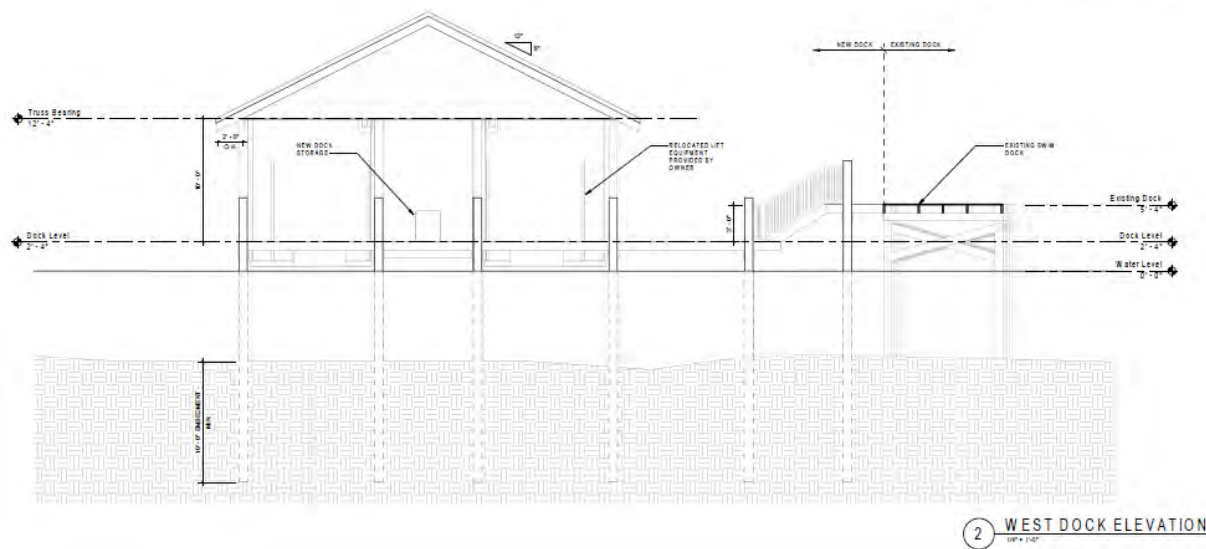
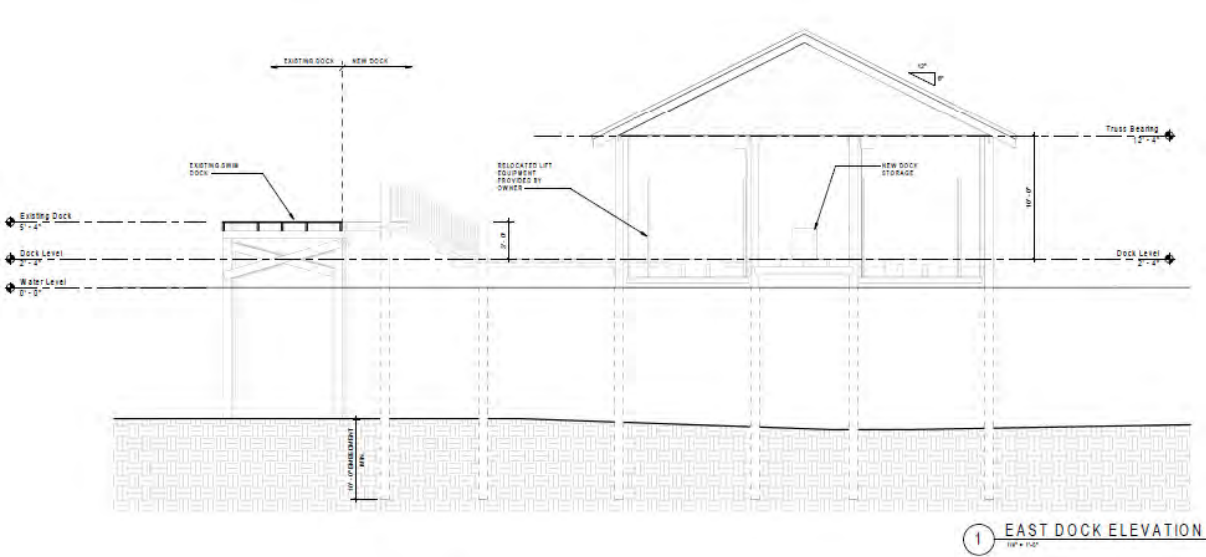


EAST EXTERIOR VIEW

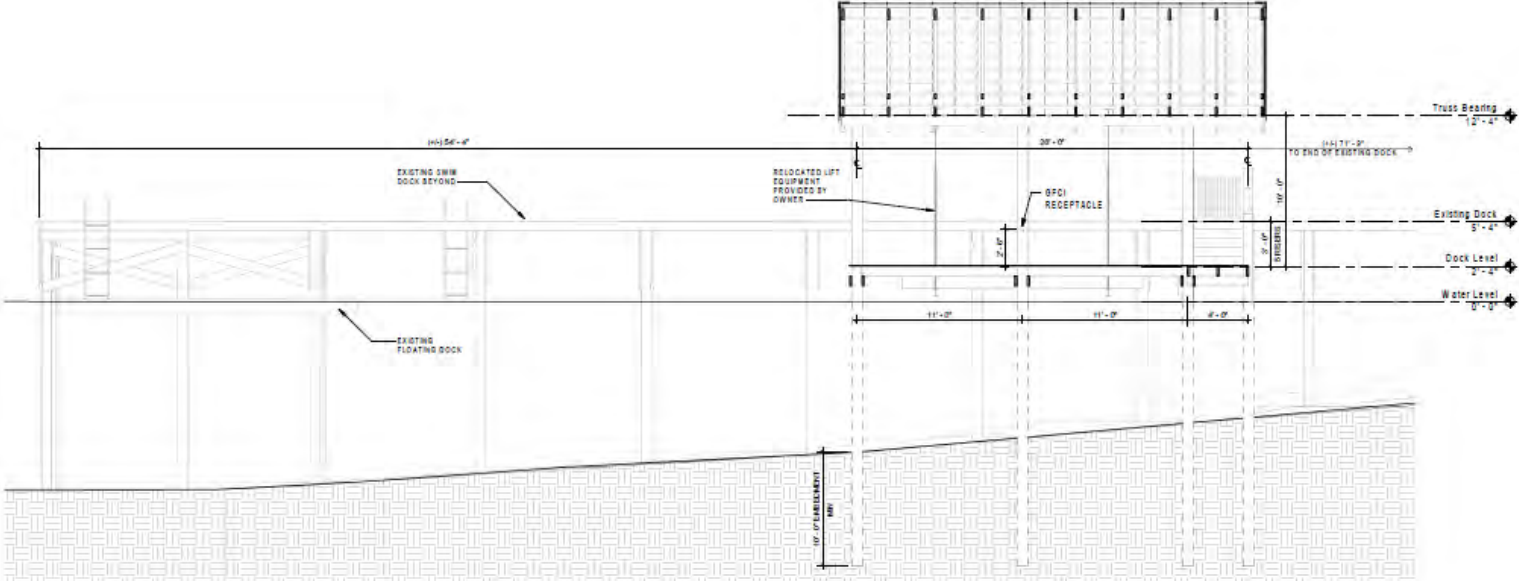


WEST EXTERIOR VIEW

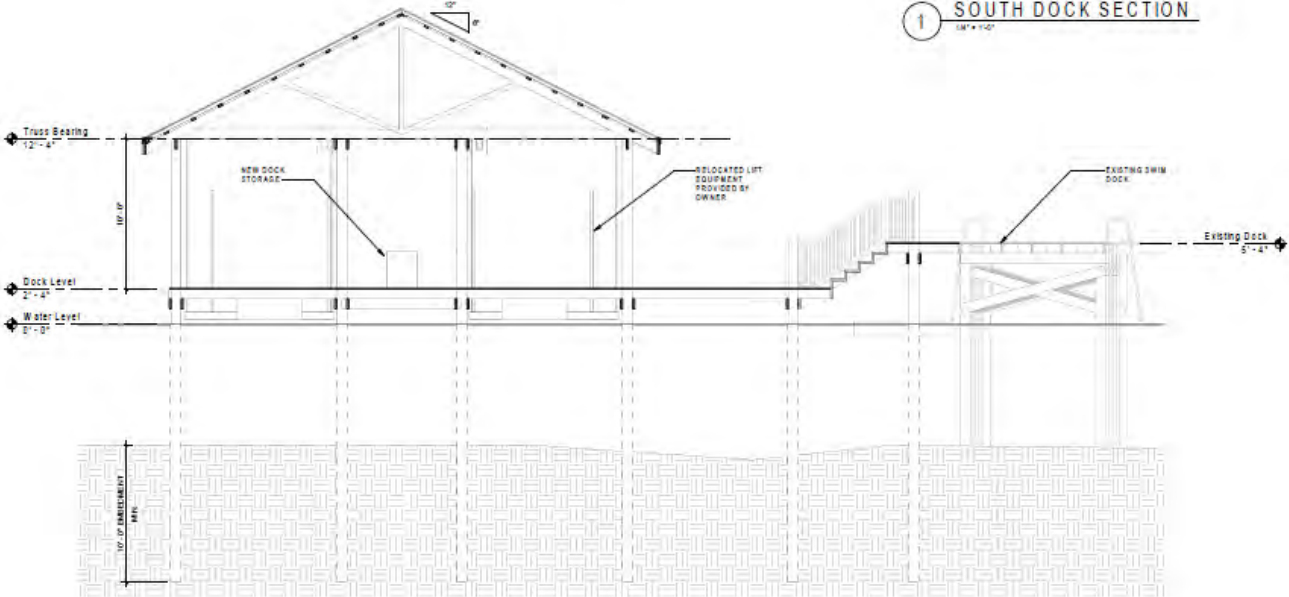
MP06579 Lake Wauburg North Shore - New Boatlift Dock Schematic Plans



MP06579 Lake Wauburg North Shore - New Boatlift Dock Schematic Plans



1 SOUTH DOCK SECTION
1/8" = 1'-0"



2 WEST DOCK SECTION
1/8" = 1'-0"

MP06579 Lake Wauburg North Shore - New Boatlift Dock

LAKES, VEGETATION AND LANDSCAPING COMMITTEE PRESENTATION – JULY 8, 2021

THANKS + QUESTIONS

